

MINUTES
of the
WILLIAMSON COUNTY COMMISSIONERS' COURT MEETING
January 13, 2004

THE STATE OF TEXAS)
COUNTY OF WILLIAMSON)(

BE IT REMEMBERED that at 9:36 A.M. on January 13, 2004, a SPECIAL SESSION of the Commissioners' Court of Williamson County, Texas, was held with the following being present, to-wit:

JOHN C. DOERFLER, County Judge
J. BRAD CURLEE, Commissioner, Precinct 1
GREGORY W. BOATRIGHT, Commissioner, Precinct 2
DAVID HAYS, Commissioner, Precinct 3
FRANKIE LIMMER, Commissioner, Precinct 4
EUGENE D. TAYLOR, County Attorney
NANCY E. RISTER, County Clerk

AGENDA ITEM 1

Hear any interested person and consider forming the next agenda or adding items to today's agenda.

David Harper addressed the Court with an update on Capital Metro. Relating to the agreement concerning the McNeil Overpass between Capital Metro and Williamson County Road & Bridge, he stated that the Board has agreed to the stated amount of \$2.7 million in principle but wants to work out some details, such as the distribution of money and how and when it will be available. Also, he invited the Commissioners to the opening of the Park-and-Ride facility in northwest Austin on January 28, 2004, at 10:00 A.M.

Rick Zinsmeyer addressed the Court in his capacity as Director of the Williamson County Community Supervision & Corrections Department, specifically mentioning that as of January 15, 2004, the County will have no voice in the actions of Corrections Corporation America, a private corporation which maintains prisons in Texas. He recognized Leonard Haley who has been an interim contract monitor in Taylor.

Lucille Turner addressed the Court in support of a Williamson County adoption of the state legislation known as Proposition 13, regarding the freezing of County taxes for the disabled and those over age 65.

Cory Shields, a council member for the City of Cedar Park, addressed the Court as a resident of Williamson County in support of an invocation of a tax freeze under Proposition 13 by the County.

Deborah Hunt addressed the Court in reference to the Appraisal District's role in the assessment of property tax.

Richard Gibbs addressed the Court regarding a water line to be placed by the Brushy Creek M.U.D. in the Great Oaks subdivision.

William H. Moore addressed the Court in support of Proposition 13.

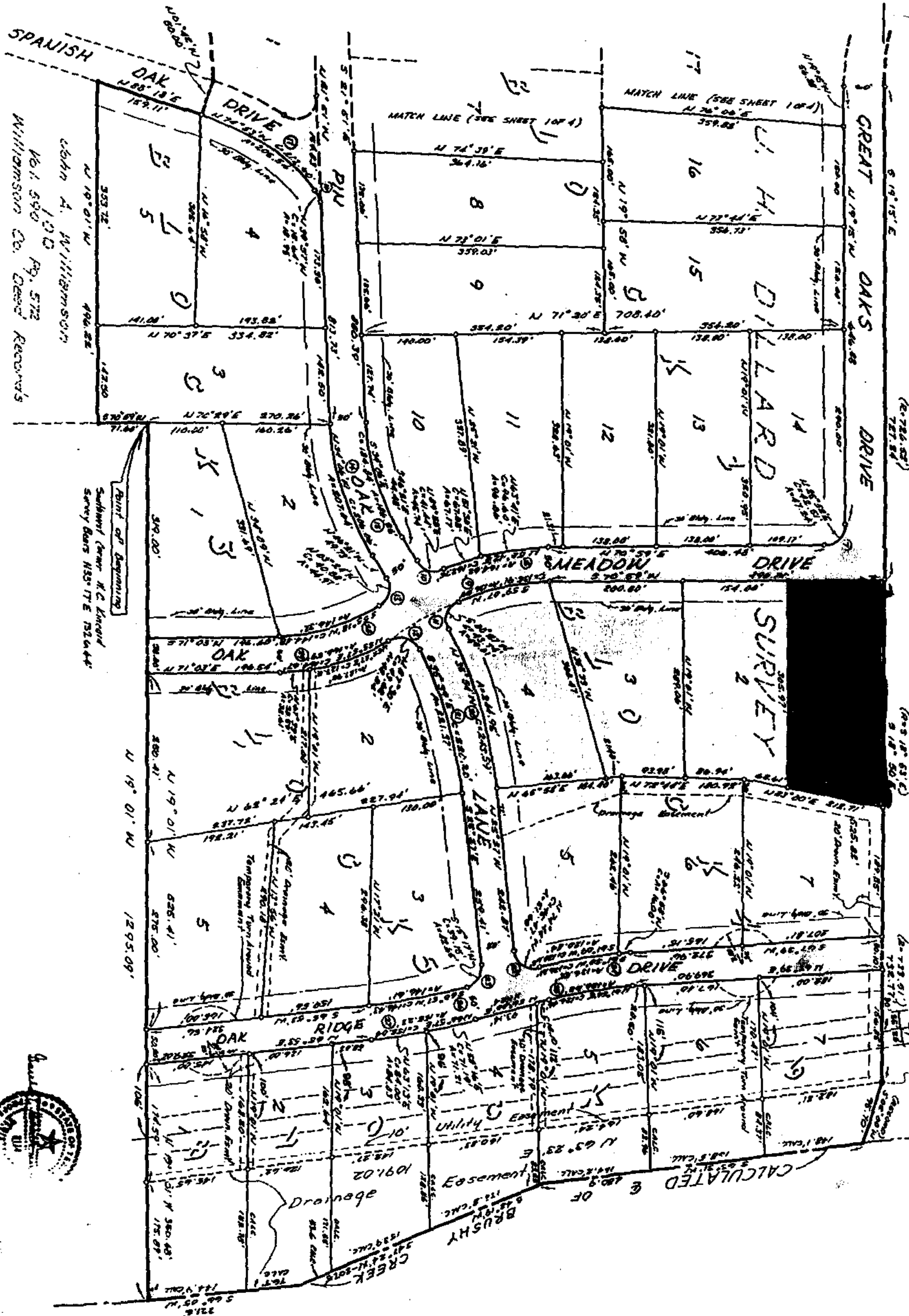
John McLemore addressed the Court to suggest the formation of a citizens' committee to study the possible effects of Proposition 13.

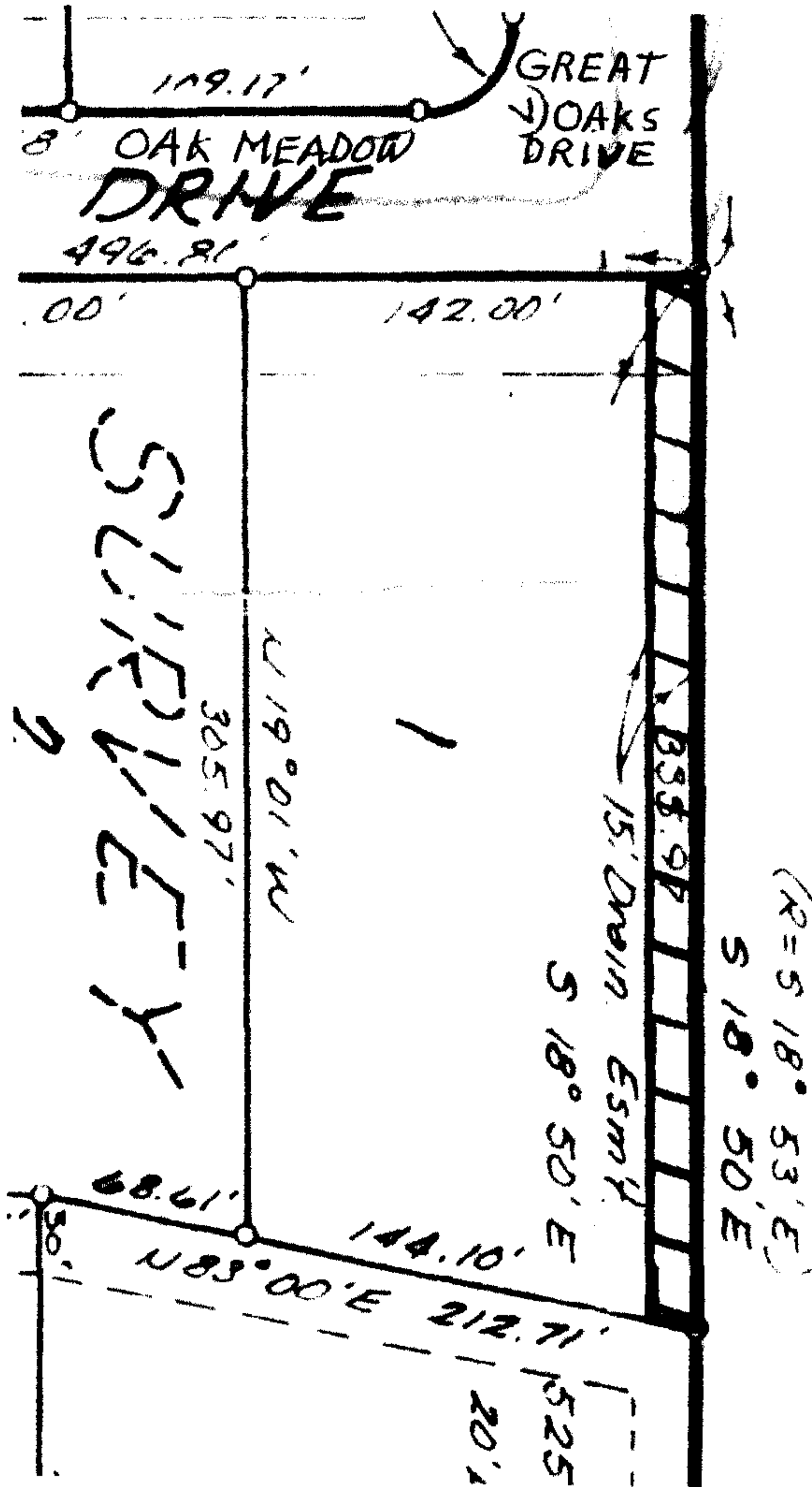
< Attachment >

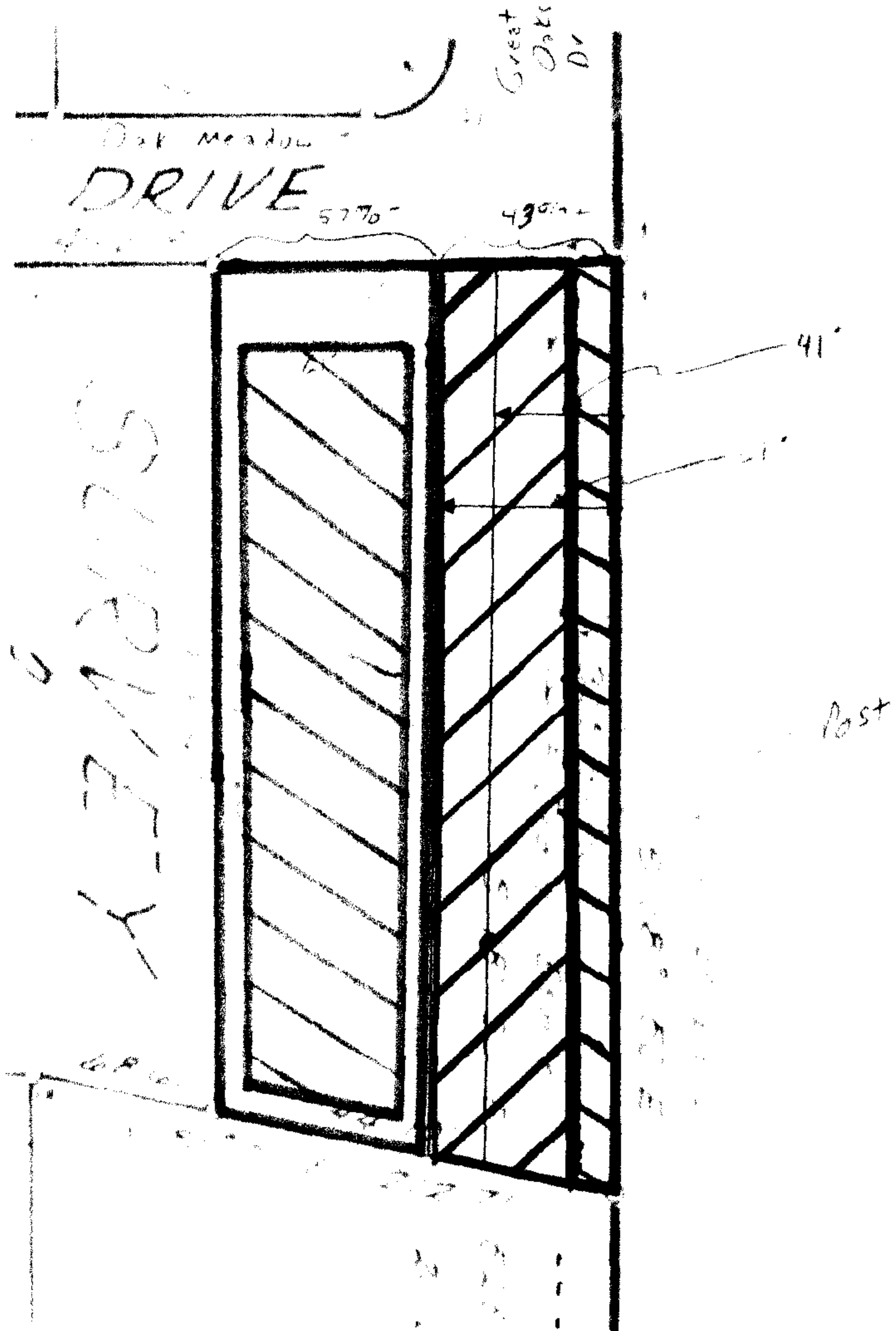
W.M. DUGAN SURVEY

50' UTILITY EASEMENT
Vol. 427 Page 229
JUNE 26, 1958

SCALE 1" = 100'







**Williamson County Commissioner's Court
January 13, 2003**

Regarding Section 2, Block 4, Lot 1 of the Great Oaks Subdivision in Williamson county, we understand that the drainage easement along the eastern edge of the property belongs to the county. Assuming this is correct (is it?):

- 1) What limitations are there on this easement? There are currently no drainage structures or contours on the easement.
- 2) Would the county allow the use of the easement by the Brushy Creek Mud to bury their 24" treated water line?

Richard Gibbs
1903 Great Oaks Dr.
Round Rock, TX 78681