

AGENDA ITEM 23

Consider authorizing advertising and setting date of January 14, 2004 at 2:00 P.M. in the Auditor's Office to recognize proposals received for Driving Simulation System for the Sheriff's Office.

Moved: **Commissioner Hays**

Seconded: **Judge Doerfler**

Motion: To authorize advertising and setting date of January 14, 2004 at 2:00 P.M. in the Auditor's Office to recognize proposals received for Driving Simulation System for the Sheriff's Office which will be funded by grant money.

Vote: **5 - 0**

AGENDA ITEM 24

Consider authorizing advertising and setting date of January 21, 2004 at 2:00 P.M. in the Commissioner's Courtroom to receive bids for the renovation of the Inner Loop Annex.

Moved: **Commissioner Hays**

Seconded: **Judge Doerfler**

Motion: To authorize the advertising and setting date of January 21, 2004 at 2:00 P.M. in the Commissioner's Courtroom to receive bids for the renovation of the Inner Loop Annex.

Vote: **5 - 0**

AGENDA ITEM 25

Consider awarding RFQ's received for landscape architectural services for Brushy Creek Trail - Phase 2 to Halff Associates.

Jim Rodgers addressed the Court explaining that the Brushy Creek Trail would extend only as far as Mr. Sall's property.

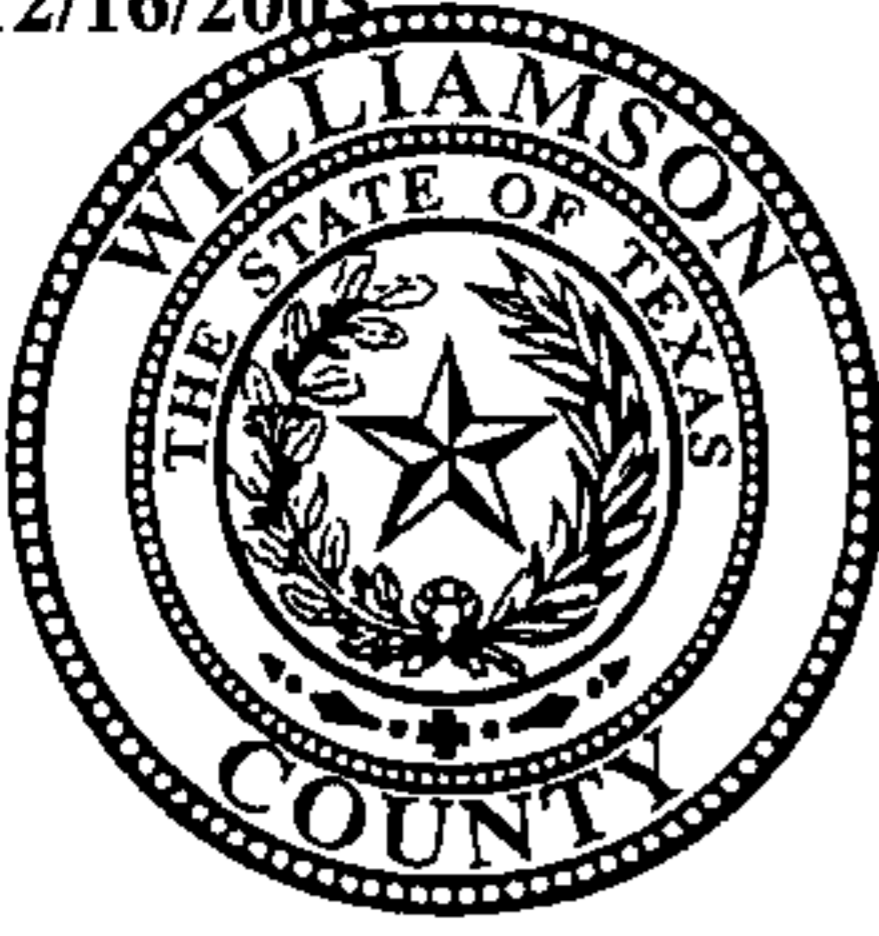
Moved: **Commissioner Hays**

Seconded: **Commissioner Curlee**

Motion: To award RFQ's received for landscape architectural services for Brushy Creek Trail - Phase 2 to Halff Associates.

Vote: **5 - 0**

< Attachment >



**WILLIAMSON COUNTY
JUDGE'S OFFICE
710 MAIN STREET, SECOND FLOOR
GEORGETOWN, TEXAS 78626**

AGENDA ITEM REQUEST FORM

REQUESTING DEPARTMENT: AUDITORS **DATE:** 12/10/03

NAME OF REQUESTOR: GINNY ATKINSON

REQUESTED AGENDA DATE: DECEMBER 16, 2003

REQUESTED ITEM(S): _____

1. Consider authorizing advertising and setting date of January 14, 2004 at 2:00pm in the Auditor's Office to recognize proposals received for Driving Simulation System for the Sheriff's Office.
2. Consider authorizing advertising and setting date of January 21, 2004 at 2:00pm in the Commissioner's Courtroom to receive bids for the Renovation of the Inner Loop Annex.
3. Consider awarding RFQ's received for Landscape Architectural Services for Brushy Creek Trail – Phase 2 to Halff Associates.

*approved 12-16-03
John C. Dayler*

AGENDA ITEM REQUEST DEADLINE - 12 NOON ON THURSDAY



Williamson County

Parks and Recreation Department

Memorandum

TO: John Doerfler, Judge
Commissioners
Williamson County

FROM: Jim Rodgers
Parks and Recreation

DATE: December 17, 2003,

RE: RFQ Brushy Creek Trail Design

Requests for qualifications for design for a next phase of the Brushy Creek Regional Trail (004WCRFQ101) were advertised and proposals were received on November 17, 2003 by the purchasing department. This design will be for the portion of the trail from Great Oaks east to the end of Fern Bluff MUD's property line, approximately 5000 feet of trail.

Nine statements of interest and qualifications were received; these were screened and evaluated by Sharon Prete of Round Rock Parks and I, Jean Cochran of Fern Bluff MUD was called out of town and could not attend. Four finalists were selected and they gave oral presentations and answered questions on their qualifications and experience. The attached matrix indicates the results of the process. I am recommending consideration of Halff Associates and will begin price negotiations on the courts approval. They were very impressive in the interview; they were well prepared and offered great suggestions on taking the trail "to the next level".

Regional Trail Evaluation Form

RFQ EVALUATION MATRIX		Regional Trail Great Oaks to Sauls					
Evaluator:		Date: 11/03					
Firm Name		(0-30)	(0-40)			(0-15)	(0-100)
		I. Professional experience & familiarity of staff w multi-use trails (10) & Team responsiveness, availability, location, (20)	II. Experience similar projects (15), special capabilities (10), government projects (15)			IV. Presentation & interview (15)	Total
Land Design Partners		7 16	11 8 14	8	3	10	77
Garcia design		1* 14					
Kellogg Landscape		7 14	13 6 15	8	4	6	73
Land Design Studio		5* 14					
Land Strategies Inc		3* 15					
Rvi		5* 15					
Hall/Bargainer		7 16	13 8 15	8	3	12	82
Half Associates		10 16	14 9 15	8	4	15	91
Alan Plummer		7 14	10 8 14	1	2		
		* Minimal Trail Experience					

Request for Qualifications

COPY



*Landscape Architectural Services for
Brushy Creek Trail - Phase II*

RFQ NUMBER: 04WCRFQ101

Williamson County, Texas

Hall Associates

LANDSCAPE ARCHITECTURAL SERVICES

November 18, 2003

Landscape Architectural Services for Brushy Creek Trail - Phase II

Williamson County - RFQ: 04WCRFQ101



Introductory Letter

Halff Associates, Inc., an employee-owned business provides services throughout Texas, from our offices in Austin, Houston, Dallas, Fort Worth, Frisco, and McAllen, Texas. The firm has a staff of more than 360 including engineers, surveyors, architects, landscape architects, and scientists. Most of our professional staff started with Halff Associates straight out of college and have grown in their careers knowing that commitment to quality is the cornerstone of the firm.

Since 1984, Halff Associates has designed approximately 35 (including 18 past or current TEA 21 and ISTE A projects) trail projects within Texas totaling more than 83 miles of trails, and has prepared master plans for another 450 miles of trails. At Halff Associates, we have landscape architects, trail planners, architects, civil and structural engineers, and surveyors all within the same firm. We design trails together, so design concepts work, are well thought out, and coordinate from the beginning.

Trail related consulting services include:

- Corridor Alignment
- Transportation Engineering
- Surveying/Mapping
- Landscape Architecture
- Architecture
- Amenities Design
- Structural Engineering
- Subsurface Utility Engineering
- Right of Way Acquisition Services
- Environmental Assessments
- Construction Management

Currently, members of our firm are working on TEA-21 projects in Brenham, Grapevine, Baytown, Killeen, Cameron, Travis County, and Hidalgo. Our selection by these cities attests to our extensive enhancement project experience.

Listen – We stress listening to our clients above all else. Williamson County has clearly spelled out what it intends to do with the trail. With our understanding of the Williamson County trail system, coupled with listening and working with your ideas, we will develop

the best alignment and the appropriate trail amenities to improve the County's overall trail system.

We will involve our most experienced trail design staff – The design process will include our most experienced trail staff including Jim Carrillo, RLA; George Prall, PE; and Todd Jackson, PE; all of whom work in our Austin office. Both George and Todd are TxDOT certified as trail design engineers.

Staff and schedule – We understand that schedules are important, and we have a significant support staff available to work on this project if needed. Our experienced Landscape Architecture staff includes five registered landscape architects and seven additional landscape personnel. The staff has more than 90 years of combined experience. We also have, in addition to George Prall and Todd Jackson, nine additional staff engineers who are certified by TxDOT to work on trails.

Work extensively with County Staff – The project team will work extensively with the County Engineering and Parks staff utilizing a series of half day "workshop" sessions to test ideas, develop concepts, and to ensure that the design is meeting your expectations and level of quality.

Location of Production Work

All management and production work of the Brushy Creek trail project will occur in our Austin office with support if necessary from our corporate office in Dallas. This will provide Williamson County the resources of 19 landscape architects, engineers and support personnel locally, with 230 additional personnel in our Dallas office to be utilized as needed. This project is important to us, and we have committed the expertise and time of our most experienced landscape architects and our trail design engineers for this effort. Our firm's project office and corporate office information are noted in the call-out box above. Our firm is registered in the State of Texas, and is licensed to perform landscape architectural and engineering services in the State of Texas. Halff Associates is not disbarred, suspended or otherwise prohibited from professional practice by any federal, state or local agency.

Sincerely,
Halff Associates, Inc.

 Jim Carrillo, RLA, ASLA, AICP
 Project Manager

Halff Associates Project Office

Project Manager:

Jim Carrillo, RLA, ASLA, AICP

1421 West Branch Hwy
 Suite 102

Austin, Texas 78703

Phone: 512/782-8184

Fax: 512/782-8143

E-mail:

jcarrillo@brushy.halff.com

Headquarters

8616 Northwest Plaza Dr
 Dallas, Texas 75225

Halff Associates

ENGINEERS • ARCHITECTS • SCIENTISTS • PLANNERS • SURVEYORS

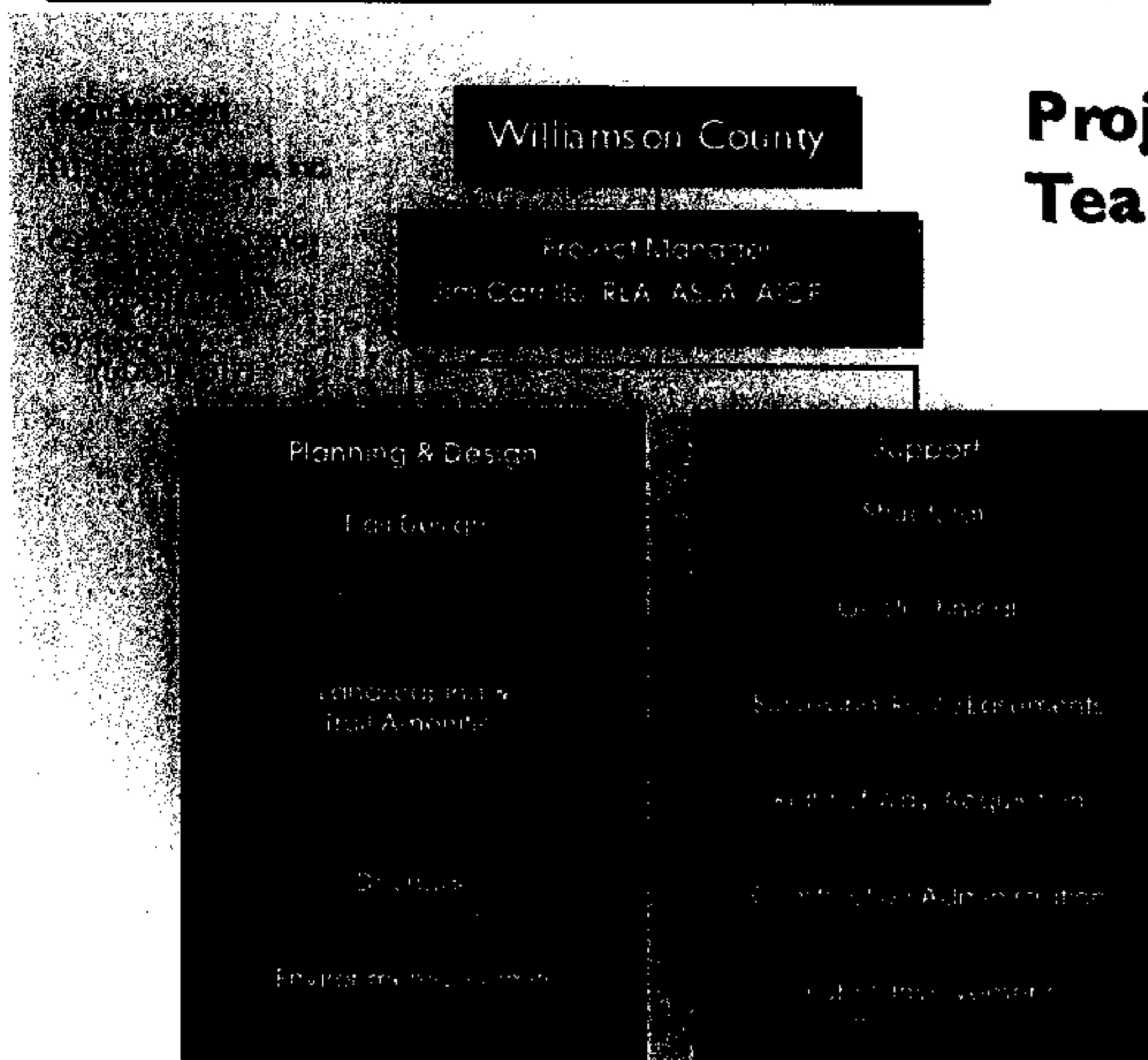
Pg.1

Landscape Architectural Services for Brushy Creek Trail - Phase II

Williamson County - RFQ: 04WCRFQ101



Personnel



* Halff Associates has eleven (11) professional engineers licensed by the State of Texas for the planning and design of Hike and Bike Trails.

Team of Firms

Halff Associates offers Williamson County a carefully selected team of personnel based on their qualifications, experience, and availability. The proposed team members have worked together on numerous federal and state-funded trail projects similar to Brushy Creek, and are very familiar with TxDOT and TPWD regulations.

Baker-Aicklen and Associates, located in Cedar Park and Round Rock, Texas, has provided surveying services for more than 20 years. Equipped with the latest in field and in-house technology, the survey group provides its clients with accurate, timely, and cost-effective surveying services. The use of state-of-the-art GPS, electronic total stations and robotic data collection equipment, as well as CADD technology is central to the survey group's operations. Boundary, topographic, route, and engineering design surveys are among the many areas of expertise the group has to offer.

Terra-Mar, Inc., owned by U.S. Laboratories, has five full-service offices including the project office in Austin. Their highly trained and experienced staff has an unparalleled working knowledge of geotechnical

engineering, environmental considerations, and quality of construction. Terra-Mar's geotechnical services include: field services (soil borings), laboratory testing and engineering analyses and recommendations. For field investigative work, Terra-Mar operates a fleet of seven drilling rigs with appropriately trained field personnel for geotechnical and environmental drilling. Their in-house laboratory is equipped to test for both simple and complex tests.

Project Team

Organizational Chart

We have assigned three professionals to the key design tasks to ensure that we are able to sustain the quality of service representative of Halff Associates. We have enjoyed an average employee retention rate of eight years, and we do not anticipate that any key personnel will be lost during the completion of this project.

We have designated Jim Carrillo as the Project Manager, with George Prall leading the trail design efforts. The following paragraphs provide brief credentials of our key project team members.

Principal/Project Manager

Mr. Jim Carrillo, RLA, ASLA, AICP, has the technical and managerial experience required for this contract. He has served both as project manager and principal-in-charge for trail

projects requiring clear communication among agencies, as well as a clear understanding of the crucial components of TxDOT-funded projects. He has managed numerous Texas hike and bike trails projects that have included a wide range of conditions including highway right of way, abandoned rail corridors, parks, wetlands, flood plain, and urban settings. Representative projects include:

- **Parks Master Plan**, Belton, TX - City wide parks plan for Belton, located near Temple in Central Texas. The plan included citizen surveys, needs assessment analysis, a city-wide trail plan, and trails concept
- **Nolan Creek Trail**, Killeen, TX - Lead Landscape



Landscape Architectural Services for Brushy Creek Trail - Phase II

Williamson County - RFQ: 04WCRFQ101



Architect for design of a major trail that will follow Nolan Creek through the heart of Killeen.

- **Citywide Trail System, Hidalgo, TX** – Responsible for the design oversight of an 18 mile citywide trail system for the growing community of Hidalgo.
- **Round Rock Trails Master Plan, Round Rock, TX** – Project Manager for mapping and route analysis for a citywide trail plan.
- **Six Cities Trail Plan, TX** – Landscape Architect assisting the cities of Allen, Frisco, Plano, McKinney, Garland, and Richardson in preparing a regional trail plan that links all six cities to major destinations in the area.
- **Denton Rail Trail, Denton, TX** - Designed an eight-mile trail section of the Dalhoma Trail, which will someday connect the Oklahoma border and the Dallas/Fort Worth Metroplex. The trail is surfaced with a crushed rock finish and includes seven trestle crossings
- **Business 83 Pedestrian and Bike Trail, McAllen, TX** - Development and design of a six-mile trail system linking McAllen's Central Business District with residential areas of the City.
- **Odessa Parks Master Plan, Odessa, TX** – Project Manager for updating master plan from previous plan including greenway corridors and trails throughout the city and the emerging "Medical Corridor" in the downtown area.
- **City of Harlingen Park Master Plan, TX** – Comprehensive Parks, Open Space, and Trails Master Plan for a city of 59,000.
- **Park Open Space and Trail Master Plan, Cedar Hill, TX** – Project Manager for a citywide park system master plan including a detailed inventory of existing park and recreation facilities and trails.

Key Personnel

The Halff team is structured to address the technical and management challenges associated with the County's needs, and we will deliver the Brushy Creek trail project within schedule and budget. We have assigned personnel who:

- Are seasoned experts who have worked together on similar projects
- Bring hands-on capability in the preparation of land planning and landscape design services
- Have extensive experience with the latest technology and methods of coordinating with regulatory agencies
- Combine the best of local knowledge with regional, statewide, and national experience
- Have the technical capabilities and personnel
- Provide extensive public participation and government agency involvement experience

George Prall, PE - Trail Design Task Manager

Mr. Prall has a wide variety of experience in trail and park design, preparation of plans and specifications, project management, and construction phase services. Mr. Prall has been an asset to all projects during preparation of construction documents, construction and maintenance of completed work. Representative trail design projects include:

- **Cameron Trail, Cameron, TX**
- **Nolan Creek Trail, Killeen, TX**
- **City of Round Rock Trails Plan, Round Rock, TX**
- **Pflugerville East Road and Trail, Travis County, TX**
- **Big Bear Creek Hike and Bike Trail, Grapevine, TX**
- **Lake Grapevine Hike and Bike Trail - Phase I and II, Grapevine, TX**
- **Recreational Trail, Plano, TX**
- **White Rock North Hike and Bike Trail, Dallas, TX**
- **Cooper Lake State Park, Sulphur Springs and Delta County, TX**
- **Pelham Park, Bowie, TX**
- **Harker Heights City Park, Harker Heights, TX**
- **Williamson County Road Bond Program, Williamson County, TX**

Todd Jackson, PE - Trail Design

Mr. Jackson joined Halff Associates in 1996. While at Halff Associates, his efforts have included the preparation and design of plan and profile sheets for trails, paving, drainage, sanitary sewer line, water line, and a manhole duct system. Representative projects include:

- **Nolan Creek Trail, Killeen, TX**
- **City of Round Rock Trails Plan, Round Rock, TX**
- **Pflugerville East Road and Trail, Travis County, TX**
- **Lake Hike and Bike Trail - Phase II, Grapevine, TX**
- **Hike and Bike Trails and Crossings, Plano, TX**
- **Denton Branch Rail Trail, Denton, TX**
- **Williamson County Road Bond Program, Williamson County, TX**

Landscape Architectural Services for Brushy Creek Trail - Phase II

Williamson County - RFQ: 04WCRFQ101

**Lenny Hughes, RLA - Landscaping and Trail Amenities**

Mr. Hughes has a wide variety of experience in landscape architectural design, parks and trail design and planning, and an extensive background in horticulture. His

responsibility as a landscape architect has been an asset to all projects during preparation of construction documents, installation, and maintenance of built work. Representative projects include:

- UTD Trail, Richardson, TX
- West Rowlett Creek Trail, Frisco, TX
- Woods at Sun Creek Trail, Allen, TX
- Business 83 Pedestrian and Bike Trail, McAllen, TX
- Sylvan Creek Trail, Lewisville, TX
- Grapevine Trail, Grapevine, TX
- Parks and Trails Master Plan, Harker Heights, TX
- Open Space and Trails Master Plan, Rowlett, TX
- Northwest Community Park, Belton, TX
- Plano Parkway Custer Road Streetscape, Plano, TX

Steven Faulkner - Landscape and Trail Amenities

Mr. Faulkner's experience includes experience in planning development, park design, commercial landscape design, and park planning. Representative experience includes:

- Round Rock Trails Master Plan, Round Rock, TX
- Odessa Parks Master Plan, Odessa, TX
- Eagle Pass Parks Master Plan, Eagle Pass, TX
- Legends Village Preliminary Master Plan, Round Rock, TX
- Parks Master Plan, Navarro County, TX

Russell Killen, PE - Drainage

Mr. Killen has been involved in site development design, municipal infrastructure design, floodplain hydraulic analysis, floodplain reclamation feasibility studies, and reservoir operation studies. Projects include:

- 70-Acre Johnson Creek Park, Arlington, TX
- 45-Acre Pelham Park Improvement Project, Bowie, TX
- 7-Acre BISD Park, Watauga, TX
- 30-Acre Cap Smith Park Site, Watauga, Texas

David Morgan - Environmental Permits

Mr. Morgan's experience includes preparation of environmental assessments and impact statements, environmental inventory and analysis of predevelopment conditions, hazardous waste closure plans, flood plain management, and open space planning. Representative projects include:

- Hike and Bike Trail, Grapevine, TX
- Fish Creek Floodplain Management Plan and Hike and Bike Trail, Arlington, TX
- City Hike and Bike Trail, Fort Worth, TX
- Greenbelt/Linear Park Study, Allen, TX
- City of Denton Hike and Bike Trail, Denton, TX
- Rowlett Creek Greenbelt Study and Park Master Plan, Rowlett, TX
- Master Plan of Trinity River State Park, Dallas, TX
- SH 87, TxDOT Houston District

Tim Abrams, PE (Terra-Mar) - Geotechnical

Mr. Abrams has more than 28 years of geotechnical engineering consulting experience. This experience includes numerous highway and bridge projects. His technical expertise includes design of concrete and asphalt pavement systems, driven pile and drilled shaft bridge foundations, earthen embankments, and cast-in-place and mechanically stabilized earth abutment walls.

- Breckinridge Park Hike and Bike Trails, Richardson, TX
- Pedestrian Bridges and Low-Water Crossing, Keller, TX
- Trinity River Trails Extension, Fort Worth, TX
- Keller Sports Park Improvements, Keller, TX
- North Fort Worth Community Park, Fort Worth, TX

Landscape Architectural Services for Brushy Creek Trail - Phase II

Williamson County - RFQ: 04WCRFQ101

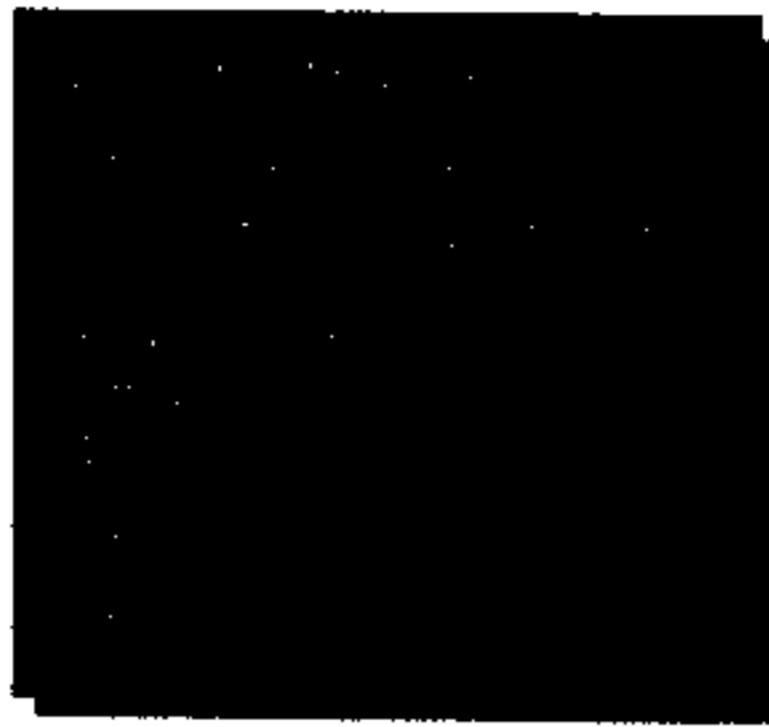


David Strutton, RPLS (Baker-Aicklen) - Surveying

Mr. Strutton has more than 25 years providing surveying for GPS Geodetic Control, major utility design and construction staking projects, transportation engineering design projects, site civil design surveys and GIS/digital mapping projects.

Representative projects include:

- City-wide Trail System, Round Rock, TX
- Brushy Creek Trail East, Round Rock, TX
- Brushy Creek Regional Wastewater Interceptor, Round Rock, TX
- Lake Georgetown Road and Bridge, Georgetown, TX
- Pflugerville Tap Road, Pflugerville, TX



Experience

Ability to Satisfy Scope of Work

Halff Associates is one of the premier trail design firms in the state of Texas. We combine the design and creative expertise of our landscape architects with the technical expertise of our TxDOT trail design certified engineers. To date, Halff has completed or is working on more than 18 STEP, ISTE, TEA-21 and AASHTO-regulated trail or enhancement projects. We will bring this extensive statewide TxDOT trails experience to Williamson County.

Very little in trail design exists that we have not seen or dealt with on the projects we have worked on, and we use that to establish a very high comfort level with TxDOT and the communities where we work. A sample listing of Halff's trail projects and services similar to your County's scope of work is demonstrated on the following chart:

Halff Associates Trail and Experience	ISTEA - STEP	TEA - 21	Int Crossings	Categorical Exclusion	604 Permit	FEMA LOWR	Bridges/ Low-Water Crossings	Trail Heads	Phased Design	On-Street Trail	Off-Road Trail	ROW Acquisition	Landscape Design	Irrigation	Park Amenities	Public Meetings	Trail Length (Miles)
Bicentennial Hike and Bike Trail - McAllen	★		★					★			★		★				2.0
Big Bear Creek Hike and Bike Trail - Grapevine		★		★	★		★	★			★		★				1.7
Citywide Greenways - Brenham		★								★	★		★			★	3.0
Clear Fork/Benbrook Bike Trail - Fort Worth	★			★	★	★	★	★		★	★	★	★			★	3.8
Cottonbelt Trail - Hurst and Colleyville	★		★	★	★	★	★	★	★	★	★		★			★	1.8
Denton Branch Rail Trail - Denton	★			★	★		★		★		★					★	8.0
Fish Creek Trail - Arlington	★			★				★			★					★	2.9
Fossil Creek - Fort Worth							★	★			★						4.0
Goose Creek Trail Phase IV - Baytown		★						★			★		★			★	1.0
Grapevine-Oak Grove - Grapevine	★			★	★		★	★			★		★				1.8
Greenbelt Linear Park Study - Allen											★						1.0
Harker Heights City Park - Harker Heights					★		★				★		★	★	★		1.0
Lake Grapevine Trail Phase I - Grapevine	★			★	★		★	★	★		★						1.8
First ISTE Trail in Texas																	
Lake Grapevine Trail Phase II - Grapevine					★		★	★	★		★						1.2
Lewisville Trail - Lewisville	★			★	★		★	★		★	★		★			★	1.5
McAllen Trail Phase II - McAllen		★	★	★				★	★	★	★	★	★			★	8.0
Nolan Creek Trail - Killeen		★	★	★			★	★			★		★			★	3.0
Northwest Community Park - Belton								★			★		★			★	1.0
Palham Park Trail - Bowie								★			★		★	★	★	★	2.0
Pflugerville Loop Trail - Travis County								★			★					★	1.8
Recreational Trail Improvements - Plano					★		★				★						1.8
Round Rock Trails Master Plan																	
Saunders Park - Fort Worth					★		★	★		★	★		★			★	0.5
Second Street Trail - McAllen	★		★					★			★		★				2.0
SH 96 Trail - League City		★		★							★						1.5
Sylvan Creek Park Trail - Lewisville								★			★		★			★	0.3
The Woods of Suncreek Trail - Allen								★			★		★	★	★		0.5
TPWD Cooper Lake State Park - Cooper					★		★	★		★	★		★				4.0
Univ. of Texas at Dallas Trail - Richardson			★		★		★			★	★		★	★			2.5
Village Creek Trail - Arlington							★	★			★	★	★			★	1.0
West Rowlett Creek Trail - Frisco					★		★	★			★		★				1.2
White Rock Hike and Bike Trail - Dallas			★				★	★			★	★				★	7.0
Cameron Hike and Bike Trail - Cameron		★					★				★	★	★			★	1.5
Hidalgo Pedestrian and Bicycle Access - Hidalgo		★		★				★		★	★		★	★	★	★	6.0
Paseo de Santa Isabela - Port Isabel		★		★				★		★	★		★	★	★	★	3.0
Total (Miles)																	83.1

Landscape Architectural Services for Brushy Creek Trail - Phase II

Williamson County - RFQ: 04WCRFQ101



Experience on Similar Projects

Pflugerville East Trail - Travis County, TX

The 1.5 mile Pflugerville Road East roadway widening and resurfacing project limits begin at the Immanuel Road intersection in the city of Pflugerville on the west, and traverses east connecting to the proposed Texas Turnpike Authority SH 130 project. **As part of the Pflugerville East project, Halff Associates is currently designing a TEA-21 funded trail.** The trail width is 12 ft wide, and extends for approximately 1.5 miles. It follows along a creek corridor and travels through a planned community park. Carefully laid out, the alignment in the field meanders through heavily wooded areas. Trail amenities includes an overlook, drinking fountains, bridge crossings, interpretive signage indicating unique tree species, and a trailhead in the planned park. The trail is slated to be open for public use by the end of 2004.

2nd Street and Bicentennial Boulevard Pedestrian and Bike Trail - McAllen, Texas

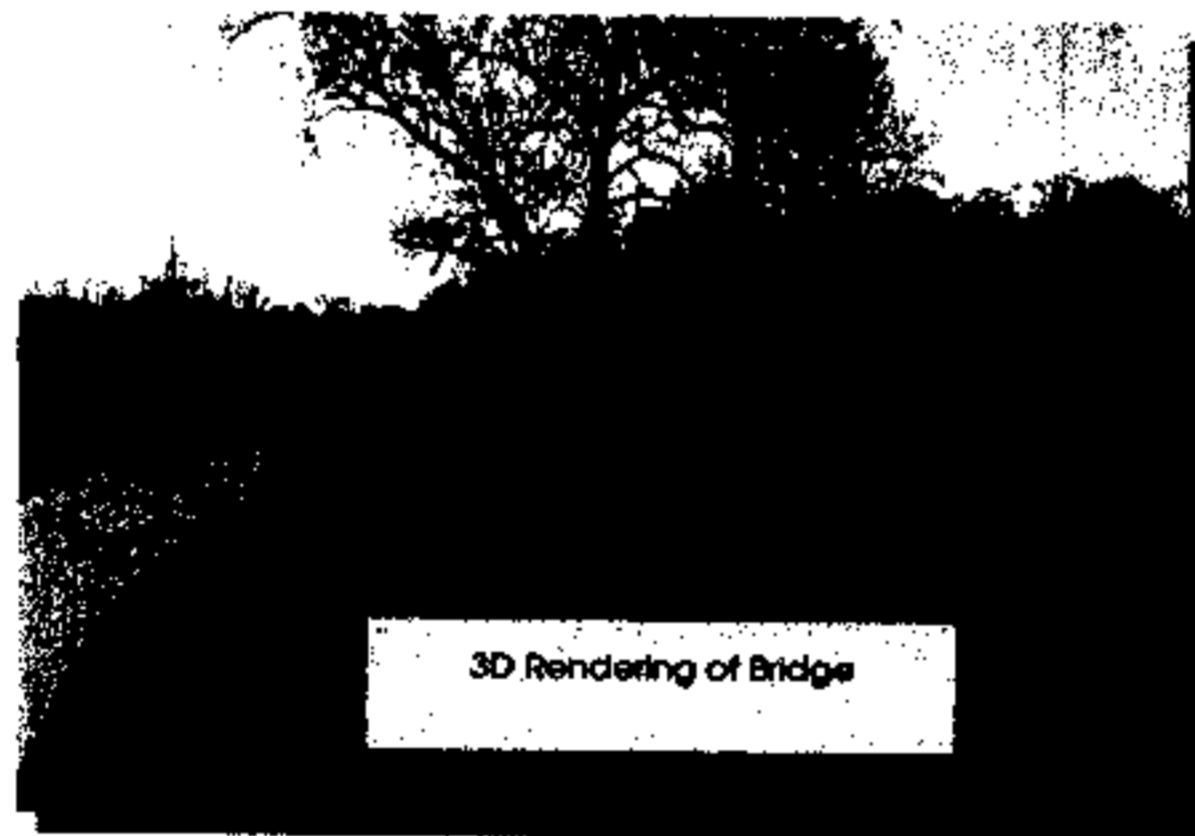


This ISTEAFunded, eight-mile trail runs through the heart of McAllen, winding through retail districts and

residential communities, past historical points and the downtown area. The trail will eventually link to the neighboring cities of Edinburg, Pharr and Mission. Halff Associates assembled all available information on local trail corridors and conducted an existing conditions inventory to determine potential trail connections. The trail uses asphalt surfacing with concrete curbs, and has proven to be one of the most popular park facilities.

Nolan Creek Pedestrian and Bicycle Trail - Killeen, Texas

Halff Associates is beginning design for a major trail corridor that runs through the heart of Killeen. The trail is funded through TEA 21 enhancement funds, and is projected



to be complete by the end of 2004. The trail is 10 ft wide, and connects several parks, the Killeen High School, and the City's Community Center. Potential amenities include: A proposed hike & bike trail alignment carefully designed with minimal disruptions to conform within the existing heavily wooded corridor, water crossing with bridge, scenic overlook, drinking fountains, interpretive signage, and trail head.

The trail runs along the banks of scenic Nolan Creek, and is designed for periodic inundation. Other unique features include a bridge over the creek, and a trail crossing under the Union Pacific Railroad tracks near the Killeen High School.

City of Round Rock Trails Plan - Round Rock, TX



Halff Associates was selected to prepare the City of Round Rock Citywide Trails Master Plan. After identifying potential routes and entry points, the implementation of the system will be considered.

Preliminary cost estimates for each section of the proposed plan coupled with the identification of critical "spine trails" will lead to a prioritization of the segments. Halff Associates will propose a timeline for implementing this prioritized list, and also suggest potential funding strategies. Recommendations for trail and parkland dedication standards and right-of-way acquisition will be made to assist the City in maintaining the vision of the plan.

Lake Grapevine Hike and Bike Trail - Phase I & Phase II, Grapevine, Texas

Halff Associates designed the Lake Grapevine Hike and Bike Trail, **the first ISTEAFunded Hike and Bike Trail in Texas.** The three mile long trail begins at the intersection of Kimball Road and Snakey Lane, and meanders through the southwest shores of Lake Grapevine.

Phase I: The 1.8-mile long trail was designed to

Landscape Architectural Services for Brushy Creek Trail - Phase II

Williamson County - RFQ: 04WCRFQ101



preserve the environmental characteristics of one of Grapevine's most significant parks and recreational greenbelts. The design team tagged, located and evaluated approximately 800 trees and interfaced this inventory with detailed topography to develop least-impact alignment alternatives for the hike and bike trail. The design required continuous coordination with TxDOT, the city of Grapevine and the Corps of Engineers to produce a TxDOT standard hike and bike trail.

Phase II: The changes in terrain and limited space along Lake Grapevine require the design of numerous retaining walls and low water crossings. The alignment also required the design of a 100-foot and a 50-foot pedestrian bridge. The design required coordination with the City, as well as the Corps of Engineers to produce an AASHTO standard hike and bike trail.

Denton Branch Rail to Trail - Denton, TX

Halff Associates prepared plans for an **ISTEA-funded eight-mile bicycle and pedestrian trail** along an abandoned rail right of way. The route parallels IH 35E and extends from near downtown Denton to the nearby city of Corinth. **The 10' wide trail is constructed of crushed limestone and granite.**



The trail crosses seven existing railroad trestles, which are paved with new decking. An additional new bridge was designed at one creek crossing. The design minimized impacts to corridor vegetation and grading. The trail, correlating signage, and other amenities are designed to comply with TxDOT and AASHTO standards.

Cottonbelt Trail - Colleyville and Hurst, TX

The Cottonbelt Trail Phase II includes approximately 1.6 miles of a 10-ft wide concrete hike and bike trail, approximately 2,400 lf and 5,200 lf running through the cities of Colleyville and Hurst respectively. **The TEA-21, CMAQ trail** also links the cities of North Richland Hills, Hurst, Colleyville, Southlake, and Grapevine to the northeast Tarrant County "Veloweb" trail corridor. Initial project tasks have included close coordination with the cities, NCTCOG, TxDOT and DART to develop a conceptual plan for the "at-grade" crossing of the DART railroad and the signalized crossing of

Precinct Line Road (FM 3029), a 130-foot right of way four-lane divided road.

The project includes the development of alternative alignments to be located within or parallel to the DART right of way while utilizing platted trail easements in the city of Hurst. A 160-foot span pedestrian bridge is planned to cross Little Bear Creek. Public Meetings will be held to gather citizen input. A Categorical Exclusion (Cat X) will be prepared to document the environmental consequences of constructing the proposed trail.

City Hike and Bike Trail - League City, TX

Though the project is called Phase II, this will be the first piece of an extensive hike and bike trail system for League City, of which State Highway 96 will be a main artery. This **TEA-21 funded hike and bike trail along SH 96** begins at SH 146 and will terminate into IH 45. A potential opportunity exists for the terminus point at SH 146 to connect into a trail system using the former SPTC railroad lines. This abandoned railroad line would link the trail system to Kemah to the north and Texas City to the south.

The approximate trail length to be designed by Halff Associates for this phase is 1.5 miles. State Highway 96 is a four lane divided highway with a 20 feet of vegetative median separating the eastbound and westbound lanes.

Oak Grove Hike and Bike Trail - Grapevine, TX

The trail will connect to the Dove Loop Road Extension that is currently under design, follow Park Road No. 1 on the southerly (lake) side of the road and connect to the existing C. Shane Wilbanks Trail located in the Oak Grove Soccer Complex. This trail segment will add



approximately 1.5 miles of **TEA-21 funded 10-foot wide concrete hike and bike trail** to the City's trail system. The project includes two pedestrian bridges and possibly will include a section of boardwalk in one

Landscape Architectural Services for Brushy Creek Trail - Phase II

Williamson County - RFQ: 04WCRFQ101



area with high ground water. The project will require coordination with **TXDOT, TPWD, Corps of Engineers** including working with them on mitigation requirements.

City of Belton and Belton ISD, Northwest Community Park - Belton, TX

Halff Associates designed Northwest Community Park for the city of Belton. This community park was a product of a partnership between the City and the Belton Independent School District developed through the Belton Park Master Plan. For the 35-acre park, Halff designed lighted softball fields with a **concession/restroom complex**, soccer fields, an in-line hockey rink, a sand volleyball court, a multi-sport court, a children's playground, an outdoor amphitheater, **parking facilities**, a **surface runoff detention pond**, and **more than a mile of trails linking the various park amenities**. Park landscaping includes a xeriscape garden and a "wildscape" area intentionally designed to foster wildlife habitat. This park is funded by a matching grant from the TPWD.

Big Bear Creek Hike and Bike Trail- Grapevine, TX



This TEA-21 funded 1.7-mile trail was carefully designed to provide a safe, scenic trail with as little environmental impact as possible. The design team **tagged, located and evaluated approximately 200 trees** and interfaced this inventory with detailed topography to develop least impact alignment alternatives for the hike and bike trail. The design required continuous coordination with TxDOT, the City of Grapevine and the Corps of Engineers to produce a **TxDOT standard hike and bike trail**. The trail is divided into three separate sections, the first of which consists of a 0.3-mile connection from Pool Road to the existing Parr Park Trail. The second section is the construction of a pedestrian bridge within the Parr Park

Trail. The final section involves the crossing of SH 121, ultimately ending in Big Bear Park. The limited space along SH 121 required the design of a unique underpass. The final alignment also required the design of five separate pedestrian bridges.

Clear Fork/Benbrook Bike Trail - Fort Worth, TX

Halff Associates was selected to design a 3.8 mile trail, which runs south along the Clear Fork of the Trinity River. This **ISTEA-funded trail** is an extension of the existing Trinity River Trail system. Environmental enhancements include habitat and tree preservation. Route studies were performed with refined alignments through public involvement and environmental assessments. The 10-foot wide trail is specifically designed for both pedestrians and cyclists. The trail is adjacent to residential areas where special safety measures were incorporated into the design. The alignment required the design of a low water crossing, two 60-foot bridge spans over tributaries to the Clear Fork and a major 180-foot span over the Clear Fork itself.

Project Management

Project Understanding and Key Issues

Based on our past experience, as well as our conversations with staff and site visits to Brushy Creek, we believe that the following issues will be critical in designing the trail.

Designing in the Brushy Creek Floodplain – Halff Associates is one of the leading hydrology and hydraulic engineering firms in Texas. We understand the operational and safety issues raised by placing the trail near the creek, and will work to design an attractive trail that withstands the periodic but powerful flooding along Brushy Creek.

Trail Proximity to Creek – How close to the creek should the trail be placed? A benefit may exist in removing the trail from the one or five-year floodplain limits, and exposing it only to larger more infrequent floods. We will work with the County to consider this option. We will weigh the scenic qualities of the trail placed nearer to the creek with the seasonal cleanup required after yearly flooding.

AASHTO Standards – How will AASTO standards impact the design of the trail? Can variances be granted where there is a compelling reason? All of our TxDOT trails have been designed with AASHTO, ADA, the Texas MUTCD and other standards in mind, and we will bring this knowledge to the project.

Landscape Architectural Services for Brushy Creek Trail - Phase II

Williamson County - RFQ: 04WCRFQ101



Multiple Drainage Culvert Crossings - The trail follows along the South side of Brushy Creek. Several culvert crossings must be negotiated. These could be addressed by extending the existing culvert under Brushy Creek Road or using prefabricated bridge options.

Maintenance and Safety Issues - We have always designed trails to be as easy as possible to maintain and operate. Often, trails are designed for quick mowing by a landscape crew or riding mower, leaving the remainder of the corridor open. We also understand safety issues, including the use of open sight lines, lighting in key areas, and the use of call boxes for added safety. Due to the proximity of the trail to Brushy Creek Road, safety considerations for trail users will be of utmost importance.

Planning for Future Connections - We will design with future connections in mind, not only east and west along the creek, but also from the north and south on the creek where feasible. **We are currently completing the Trails Master Plan for the City of Round Rock.** This will enable us to anticipate and design for future connections to the City Trails System as well as connect to existing MUD trails.

How Services Will Be Performed

Project Data Collection

Initial Project Meeting:



The initial project meeting will include:
Meeting with County staff to refine project schedule, parameters, and

coordination with other area projects; defining key trail interest and user groups who may be included in Citizen Involvement efforts; walking the entire alignment of the proposed trail with County staff, supplementing existing record photography; inviting key stakeholders, including TxDOT, Round Rock, Cedar Park, and other interested user groups to join us in the alignment walk through; and reviewing alternative alignments with key County staff to analyze specific project issues.

Assemble Available Information: The material to be assembled includes water, wastewater, storm drainage, electrical, gas, telephone, and cable TV mapping; fiber optic; design concepts; available topography; available documentation of existing

environmental problems; County, TxDOT design and construction standards; as well as proposed plans for future roadway extensions of Creek Bend Boulevard and Wyoming Springs Drive.

Review Existing Ownership Boundaries: Halff Associates will identify applicable jurisdiction lines, easements, right of way, etc. from available sources. We will determine the limits of any easement or right of way required for the trail.

Prepare Schematic Base Mapping:



A base map will be prepared from existing surveys, utility maps, and detailed mapping will be prepared as needed for critical areas.

Identify Existing Trail Corridor

Features: We will address and map features, which will impact trail alignment, such as vegetation, unusual or limiting topography such as the Fern Bluff, street intersections and crossing areas, creek crossings, utilities, etc.

Define Key Adjacent Land Uses: Land uses along the trails, such as nearby churches, schools, residential neighborhoods, public facilities, etc., that will generate activities along the trail will be identified and mapped.

Opportunities and Constraints Exhibits: Graphic exhibits illustrating the opportunities and constraints associated with the trail alignment will be prepared. We will also determine permit requirements including, but not limited to: right of way, roadway and highway crossings, and other applicable state and federal permits.

Environmental Assessment And Cultural Resources Review

Environmental Assessment: Our team will conduct a review of the trail corridor for potential environmental hazards and document findings in a draft Environmental Assessment letter. This letter will be submitted to TxDOT, FHWA, and the Texas Historic Commission. The Environmental Assessment will request a Categorical Exclusion status.

Environmental Project Impacts: Environmental impacts are anticipated to be positive or have no

Landscape Architectural Services for Brushy Creek Trail - Phase II

Williamson County - RFQ: 04WCRFQ101



adverse impact. Few trees are expected to be impacted as a result of trail development (*trees lost due to project development will be replaced*). Drainage areas along and near the trail are expected to remain the same or be improved.

Schematic Design

Prepare Target Design Criteria for Trail Section:



Base criteria in accordance with AASHTO, ADA, as well as County, and TxDOT specifications will be prepared, including: trail width and shoulder dimensions; trail

curvature and cross-slope; preferred crossing locations; criteria for maximum adjacent side-slope; and alternative conceptual alignments for the trail.

Review with County Staff: We will work with the County to select the preferred criteria and conceptual location for the trail.

Property / Easement Acquisition: Our design team will identify constrained areas that will necessitate the acquisition of permanent right of way or temporary easements.

Develop Conceptual Level Trail Design: We will refine concept trail alignments with typical sections; develop conceptual crossing, signage and visibility recommendations for intersections; prepare conceptual bank stabilization alternatives; and refine conceptual solution for at-grade crossings. During the schematic design, we will analyze the impact of the trail to current drainage patterns and structures. **The proposed trail will be designed to have no adverse impacts on existing drainage patterns.**

Schematic Level Statement of Probable Cost: Preliminary construction statement of probable costs, based on proposed alignments and selected alternates will be developed.

Community Involvement and Input

Ability to Graphically Represent Ideas: We have perfected techniques using aerial photographs and digital imaging to clearly communicate our ideas to the future users of the facilities. Examples of past exhibits, which only take a few hours to prepare, are contained in this section. They have one fundamental purpose - to allow citizens to truly understand what is being proposed, not

simply to look at a glossy plan they may not understand. Understanding builds excitement, acceptance and a feeling of ownership of the design.

Conduction of Public Meetings:

Real efforts should be made to seek out citizen input in publicly funded projects. Citizen participation throughout the design process helps to instill a sense of ownership along with understanding. We believe that this is one of the core responsibilities of the designer and a great strength of ours. Public meetings, "open houses", workshops and other interactive forums facilitate connecting the wants and needs of the community with the product they will eventually use.



Prepare Summary of Meeting Results:

Documentation and preservation of written results, such as surveys or idea voting boards, or orally given responses and ideas will be submitted to the County for their records.

Survey For Design

Determine Required Surveying: Halff Associates will review schematic drawings and other available information to plan fieldwork. We anticipate surveying critical areas along the alignment, and will identify property lines and property owners to facilitate the acquisition of right of way and easements.

Final Plans / Specifications

Incorporate Survey Data into Base Mapping:

Assembly and incorporation of the survey data gathered into the base files will be used in the preparation of final drawings.

Prepare Construction Plans: The construction plans preparation includes: Preparing plans; sections and profiles (*as necessary*); indicating construction phasing, as applicable; as well as preparing plan and profile sheets which include: the horizontal alignment

Landscape Architectural Services for Brushy Creek Trail - Phase II

Williamson County - RFQ: 04WCRFQ101



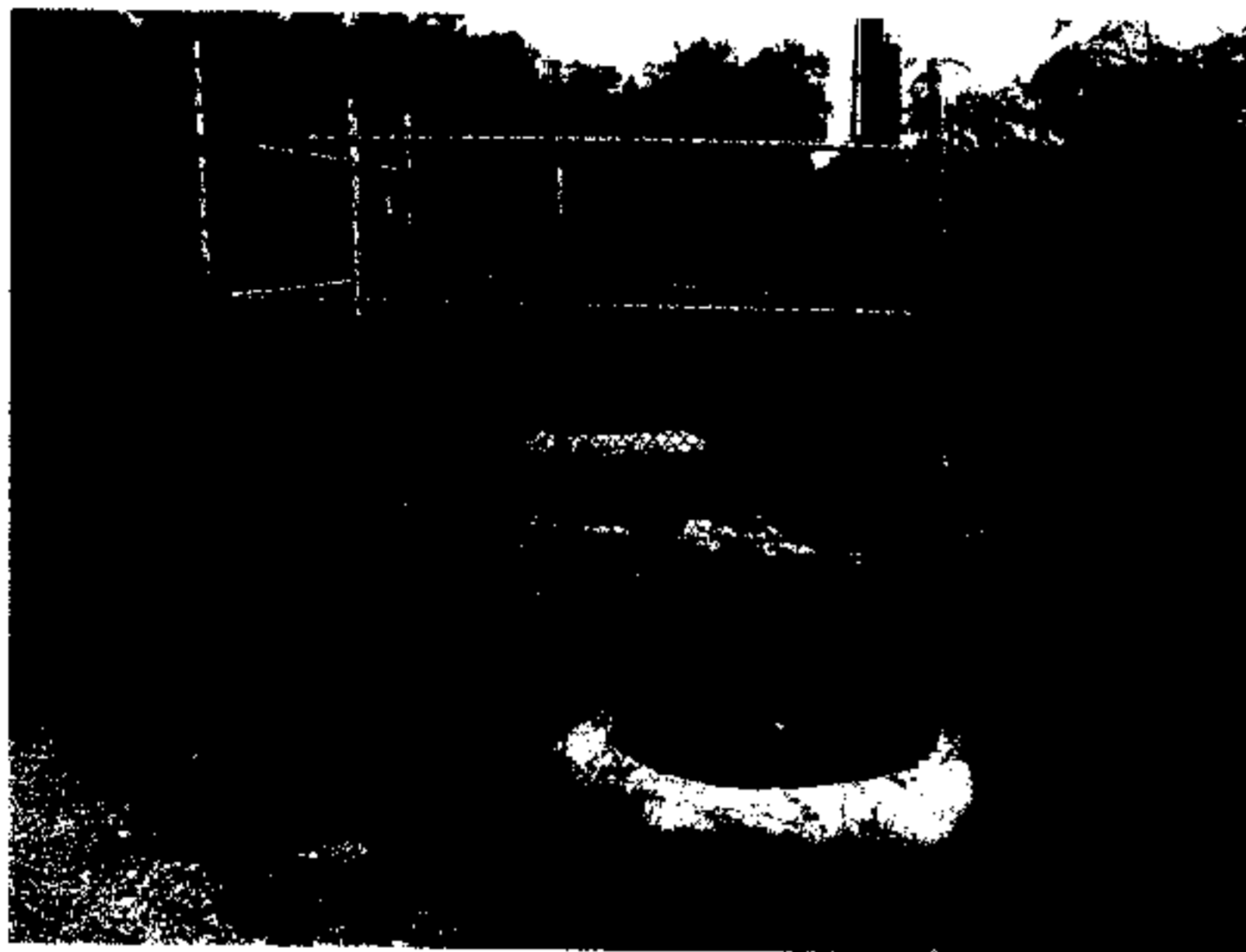
and centerline curve data; horizontal location of all improvements within 50 ft of the trail; right of way and property lines; horizontal control monuments; names and addresses of property owners of record; and locations of all overhead and underground utilities along the route.

Design Signage and Pavement Markings: All pavement markings and signage will be designed according to Texas Manual of Uniform Traffic Control Devices (TMUTCD) requirements.

Typical Details: Typical trail details, bridge details as needed, details for alternate trail route improvements, and details for recreational facilities will be designed.

Landscaping and Amenity Plans: As required, we will prepare landscaping plans for trail corridor, using Xeriscape techniques wherever possible.

Utility Company Review:



Notification of utility companies and submission of preliminary plans for review will occur. This review includes contacting utility companies about plans for future utilities.

Assemble Standard Drawings: We will assemble and modify, as needed, standard detail sheets; prepare specifications, quantity summaries, and pay item data. A detailed contract time estimate work sheet to determine the approximate time (working days) will be prepared and submitted.

Traffic Control and Storm Water Pollution Prevention Plans: Traffic control and SWP3 (*Stormwater Pollution Prevention Plan*) will be prepared.

Final Cost Estimate: A revised statement of probable cost based on final drawings will be submitted and reviewed with County staff.

Assist in Community Meeting: We will present the final plans at a community meeting (*advertised and conducted by County staff*).

Submit Plans to County for Final Review: Review comments will be incorporated and addressed.

Submit Final Plans, Specifications to County: A reproducible set of drawings, with an original set of specifications will be submitted to the County. Additionally, construction drawings generated on CADD will be delivered on CD in all formats requested.

Bid Phase

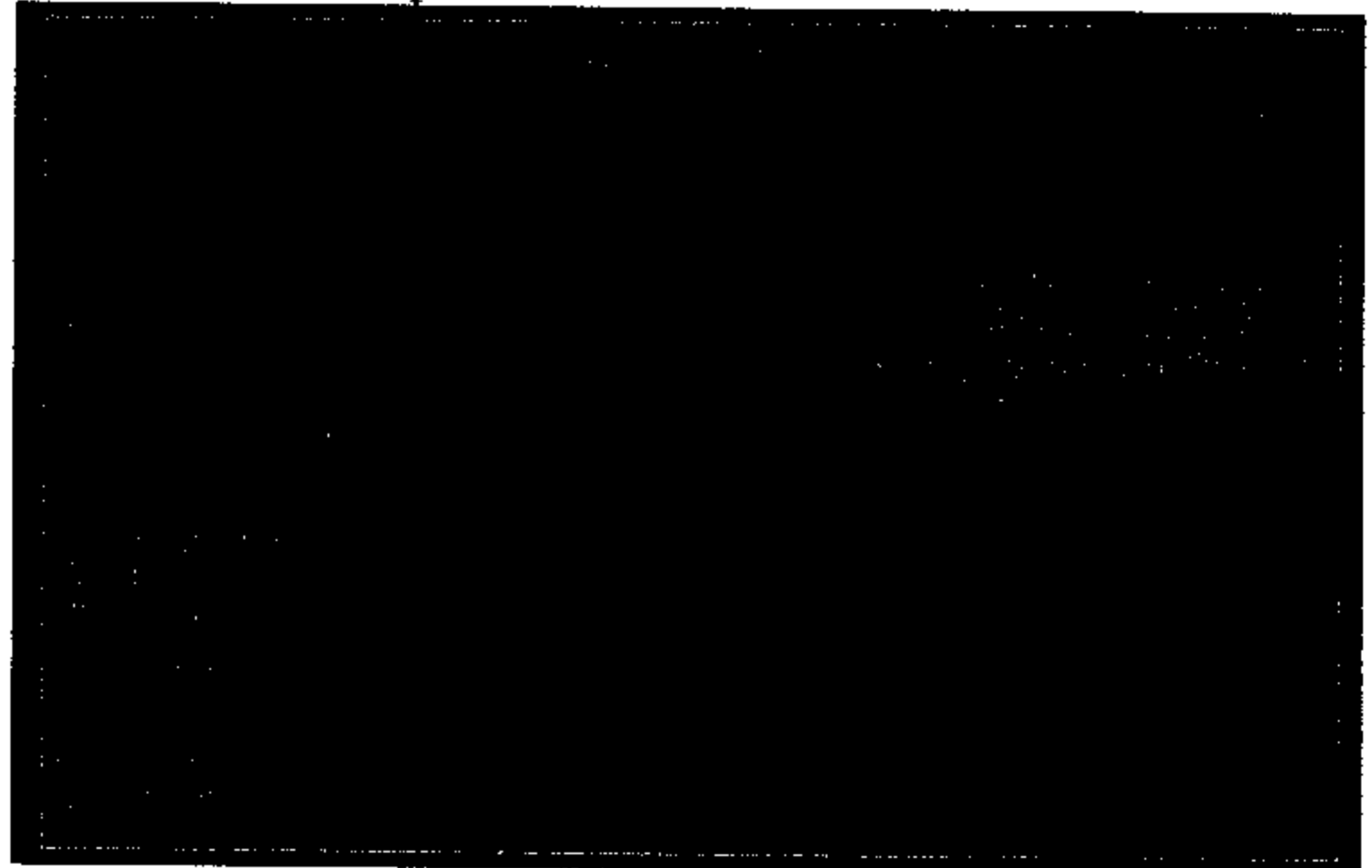
- Prepare bid documents, including special provisions
- Finalize construction cost estimates based upon the final construction packages
- Assist County staff in advertising project for bids
- Assist County staff in pre-bid conference, as required
- Evaluate all bids received and prepare bid tabulation
- Recommend lowest responsive contractor

Reports Provided to the County

During the course of the design effort, we will provide regular reports on the status of the project. We typically submit a report once a month, but can meet whatever schedule Williamson County customarily uses.

Ability to Define Project Schedule and Meet Deadlines

Maintaining the project schedule and budget is extremely critical. Halff Associates takes an organized, systematic approach to managing and documenting the Team's work efforts. With our project office located in Austin, we will be able to provide immediate on-site response.



Landscape Architectural Services for Brushy Creek Trail - Phase II

Williamson County - RFQ: 04WCRFQ101



Halff Associates will take an organized, systematic approach to managing and documenting the Team's work efforts. The project schedules will be loaded into **MS Project** with all applicable descriptions, durations, lags, codes, resources, and expenses applied to each activity. The schedule can be easily updated on a monthly basis. Upon update, the schedule will be distributed to Williamson County and our team members.

The Halff team will use schedules at different levels of detail for controlling the planning and schematic preparation process. We have developed a preliminary schedule that will facilitate completion of the design by mid 2004.

Inspection of Work and Quality Assurance of Construction Contractor's Work



After construction contract award, we can provide construction management services. These services will provide the County with construction supervision at any level desired, such as: full-time, part time, or on an as-needed basis. Services that Halff Associates can provide include but are not limited to the following:

- Assist in pre-construction conferences
- Assist County staff with public meetings to keep area residents informed of construction status
- Videotape project areas before construction to document existing conditions
- Field surveying for construction
- Inspect SWP3
- Provide construction inspection services as requested to monitor progress
- Establish weekly coordination meetings with contractor and inspection personnel
- Review shop drawings and other submittals
- Review and process change orders
- Review monthly pay requests to verify the work performed and make recommendations to the County for payment, if in order

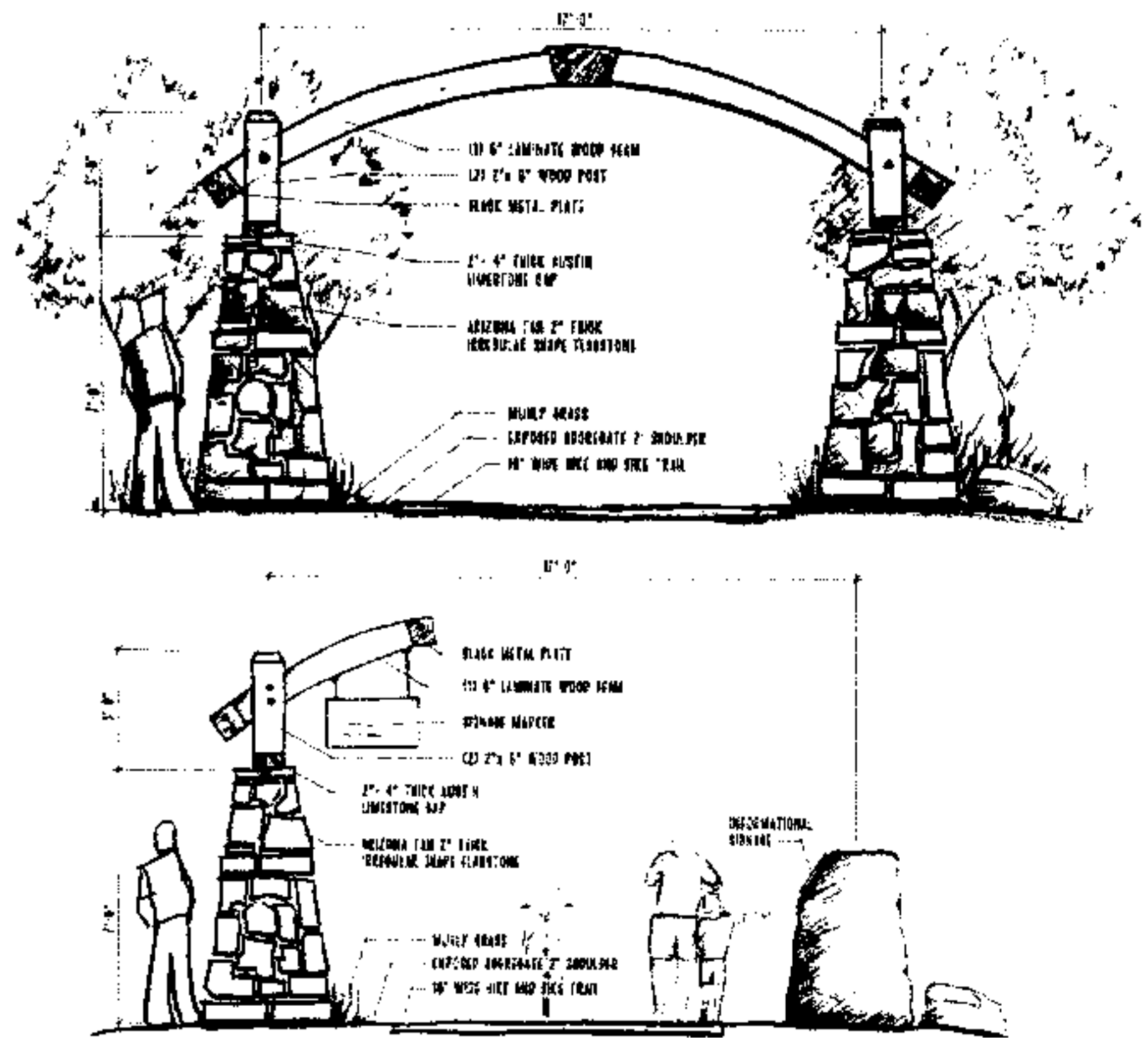
- Monitor construction schedule versus actual construction activities
- Monitor testing procedures
- Assist County in conducting final inspection
- Prepare punch list of items to be rectified before final acceptance
- Recommend final acceptance of work
- Prepare record drawings based on contractor's markups

References

Jim Butler, PE, City Engineer
City of Killeen
200 East, Avenue D
Killeen, Texas 76540
254/501-7623

Sharon Prete, Director
City of Round Rock
301 W. Bagdad Street.
Round Rock, Texas 78664
512/218-5540

Joe Moore, Asst. Director of Parks and Recreation
City of Grapevine
P.O. Box 95104
Grapevine, TX 76099
817/410-3121



Trail Signage Concept, based on interpretation of Hill Country architecture

PARK AND TRAIL AWARDS

Casey's Clubhouse
Georgetown, Texas
Innovative in Park Design Award
Texas Association of Park Districts

Dallas County Trails Plan
Dallas, Texas
Dallas County Board of Commissioners
City of Dallas Parks and Recreation Department

Dallas County Trails Plan
Dallas, Texas
Dallas County Board of Commissioners
City of Dallas Parks and Recreation Department

White Rock Hill & Hill Trail
Dallas, Texas
Dallas County Board of Commissioners
City of Dallas Parks and Recreation Department

Highway Creek
Dallas, Texas
Dallas County Board of Commissioners
City of Dallas Parks and Recreation Department

Highway Creek
Dallas, Texas
Dallas County Board of Commissioners
City of Dallas Parks and Recreation Department

Highway Creek
Dallas, Texas
Dallas County Board of Commissioners
City of Dallas Parks and Recreation Department

Half Associates

11111 RICHMOND AVE. SUITE 1000 DALLAS, TEXAS 75243