

AGENDA ITEM 21

Discuss and take appropriate action on jail/courthouse annex expansion.

Ed Lee updated the court on the jail/courthouse annex expansion. The construction manager agent for the courthouse annex is requesting a change order for extending the project start date from March 11, 2003 to April 15, 2003 and to shift the schedule for substantial completion to June 14, 2004.

Moved: **Judge Doerfler**

Seconded: **Commissioner Heiligenstein**

Motion: To grant the extension for extending the project start date from March 11, 2003 to April 15, 2003 and to change the schedule for substantial completion to June 14, 2004.

Vote: **5 - 0**

Commissioner Hays requested a work session for next Tuesday at 2:00 p.m. regarding the jail/courthouse annex expansion.

AGENDA ITEM 22

Discuss and take appropriate action on granting easements to TxDOT for water quality items related to SH130.

Ed Sutherland from Lone Star Infrastructure made a presentation regarding the request by TxDOT for placement of drainage features inside the boundary of Berry Springs County Park and Preserve.

Moved: **Judge Doerfler**

Seconded: **Commissioner Hays**

Motion: To approve a resolution granting easements to TxDot for water quality items related to SH130 once Charlie Crossfield and Dale Rye have reviewed it and worked out the legalities.

Vote: **5 - 0**

<Attachment>



Williamson County

Parks and Recreation Department

Memorandum

TO: John Doerfler, Judge
Commissioners
Williamson County

FROM: Jim Rodgers
Parks and Recreation

DATE: May 15, 2003

RE: SH 130 at IH 35 - Berry Springs Park

Texas Department of Transportation (TxDOT) is requesting the granting of drainage easements in Berry Springs Park. These easements are for water quality ponds and drainage associated with improvements to IH 35 that are a part of the State Highway 130 project. The attached information and resolution from TxDOT and Lone Star Infrastructure (LSI) indicates the desired easements. Our preference is not to have this intrusion on the park but in the spirit of cooperation we are working with TxDOT. Most of our concerns have been addressed by TxDOT with the exception of landscaping and planting trees around the detention ponds so they will be aesthetically pleasing to park patrons and users of IH 35. If approved the easement document will be finalized with Charlie Crossfield.

**Lone Star Infrastructure**

1421 Wells Branch Parkway
Building 2, Suite 200
Pflugerville, TX 78660
(512) 681-6000
(512) 681-6001 FAX

May 15, 2003

108.19-003

Williamson County Judge
710 Main Street
Georgetown, Tx 78626

Attention: Honorable John Doerfler

Subject: Berry Springs Park and Preserve

Reference: SH 130 Turnpike

Dear Judge Doerfler:

Enclosed are five packets of information relative to the request by the Texas Department of Transportation (TxDOT) for placement of drainage features inside the boundary of Berry Springs County Park and Preserve. An item has been placed on the Williamson County Commissioners' Court agenda for Tuesday, May 20, 2003 relative to this item. The following items are part of each packet:

- 1) A letter from TxDOT dated May 12, 2003 requesting a resolution from Williamson County.
- 2) Attachment A: An aerial photograph showing a plan view of the IH 35 with the proposed improvements relationship to Berry Springs County Park and Preserve.
- 3) Attachment B: Photographs of examples of similar types of drainage features to those planned for Berry Springs Park.
- 4) Attachment C: A Draft Resolution by Williamson County agreeing to convey drainage easements to TxDOT within Berry Springs Park.

We appreciate the Court's attention in this matter.

Sincerely,

Douglas A. Fuller
Project Manger
Lone Star Infrastructure

ES/js

cc: Sharon Gookin - LSI
Tom Van Zandt, Environmental Compliance Manager, LSI



Texas Department of Transportation

DEWITT C. GREER STATE HIGHWAY BLDG. • 125 E. 11TH STREET • AUSTIN, TEXAS 78701-2483 • (512) 463-8585

May 12, 2003

The Honorable John Doerfler
Judge of Williamson County
710 Main Street
Georgetown, TX 78626

Re: SH 130 at IH 35 – Berry Springs County Park and Preserve

Dear Judge Doerfler:

As you know, last year the Texas Department of Transportation (TxDOT) executed an Exclusive Development Agreement (EDA) with Lone Star Infrastructure (LSI) for the design and construction of SH 130. Since execution of the EDA, TxDOT and LSI have been working diligently on design and right-of-way activities in anticipation of initiation of construction during the summer of 2003.

In the Georgetown area, much of SH 130 is located within the recharge zone of the Edwards Aquifer and is therefore subject to the Edwards Rules administered by the Texas Commission on Environmental Quality. To satisfy the Edwards rules, permanent water quality treatment ponds are required. While designing the ponds, TxDOT and LSI learned of plans for the Berry Springs County Park and Preserve. Once TxDOT and LSI became aware of the plans for the park, the SH 130 design team began working on ways to minimize potential impacts to the park. During this process, TxDOT and LSI met twice with Jim Rogers of the Williamson County Parks Department. The first meeting was held on April 28, 2003. The second meeting took place on May 7, 2003. During these meetings, TxDOT, LSI and the County Park staff shared information regarding SH 130 and the proposed park and discussed opportunities for cooperative development of the two projects. As a result of these meetings, TxDOT and LSI have further modified SH 130 plans to minimize potential impacts to the park.

Under the modified plan, drainage and/or water quality features of SH 130 would encroach upon the park at three locations – two east of IH 35 and one west of IH 35. All three locations are shown on the attached layout.

As you can see, east of IH 35 two water quality ponds are necessary. Under the original design, one of these ponds partially encroached upon the park. When LSI became aware of the park, the design team modified the design and relocated the pond outside of the park boundaries. Treated water from the ponds will be piped to the IH 35 right-of-way where it will be released into roadside ditches – all of this taking place outside the boundaries of the park. Despite a concerted effort to completely avoid the park, one long drainage easement between the two ponds but within the park, is needed to accommodate overflow runoff from the ponds to Berry Creek. (Based on hydraulic studies and design capacity of the ponds, overflow conditions would only result from 100-year storm events.) Although the required

An Equal Opportunity Employer

easement would extend all the way to Berry Creek, the actual channels would only extend to the 100-year floodplain and no trees would be cleared. To maximize compatibility with the aesthetic environment and planned functions of the park, it was agreed that the channels would be constructed as grassy swales. Attachment A shows a plan and cross-sectional view of the channels. Attachment B photographs show a similar grassy swale.

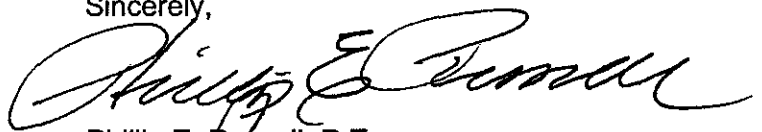
On the west side of IH 35, a second easement is needed within the boundary of the park. Within this easement a channel would be constructed to convey off-site drainage to Berry Creek. No roadway runoff would be conveyed in this channel. Although the steep terrain limits the engineering options and aesthetic treatments that may be successfully employed at this location, at the request of County Park staff, rocks and rock gabions will be used to line the channel. This will enhance the appearance of the drainage facility and minimize the visual intrusion within the park.

I would also like to point out that the design for the improvements to the IH 35 bridges over Berry Creek would not preclude the extension of the proposed Berry Springs Park hike and bike trail underneath the bridges on the north bank of Berry Creek.

If acceptable to Williamson County, TxDOT and LSI are committed to constructing the required drainage features within Berry Springs County Park and Preserve in the manner described in this letter and shown on the attachments. If Williamson County agrees with the design of the drainage features described herein, and as shown on the attachments, agrees to reserve and provide to TxDOT the necessary easements within the park, TxDOT and LSI request that the County Commissioners Court issue a resolution to that effect at its earliest convenience.

It is my understanding that the first preference of Williamson County would be that no drainage features be placed in the park so on behalf of TxDOT and LSI, I want to thank you for your consideration of this request. I sincerely appreciate the effort and willingness of Williamson County to work toward a mutual resolution of this issue that is compatible with the objectives of both of SH 130 and Berry Springs County Park and Preserve.

Sincerely,



Phillip E. Russell, P.E.
Director, Texas Turnpike Authority Division

Attachments

ATTACHMENT A
AERIAL PHOTOGRAPH AND PROJECT PLAN

ATTACHMENT B
PHOTOGRAPHS OF EXAMPLE FEATURES

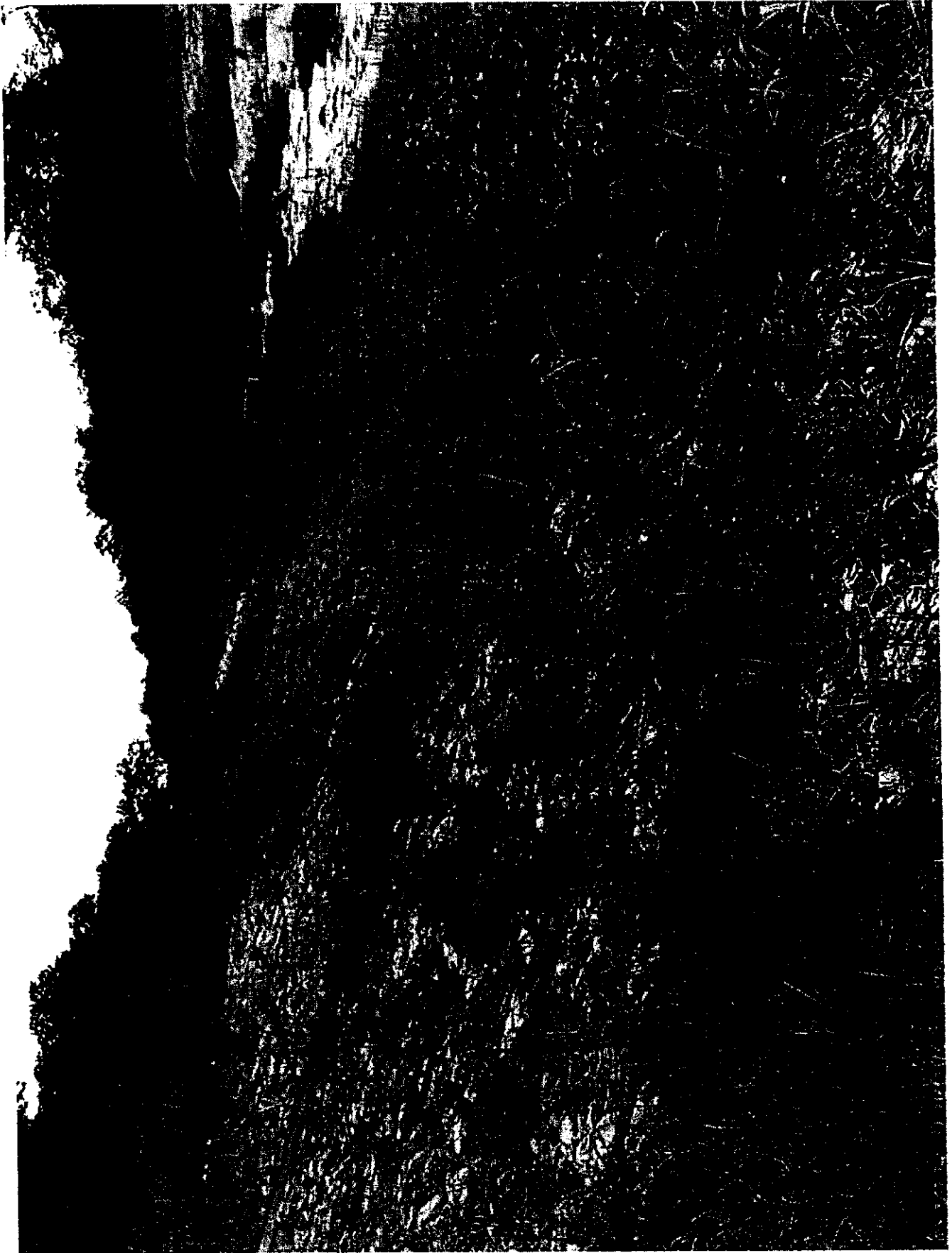


Photo 1 – Boggy Creek west of US 183
Gabion mattresses for slope stability.

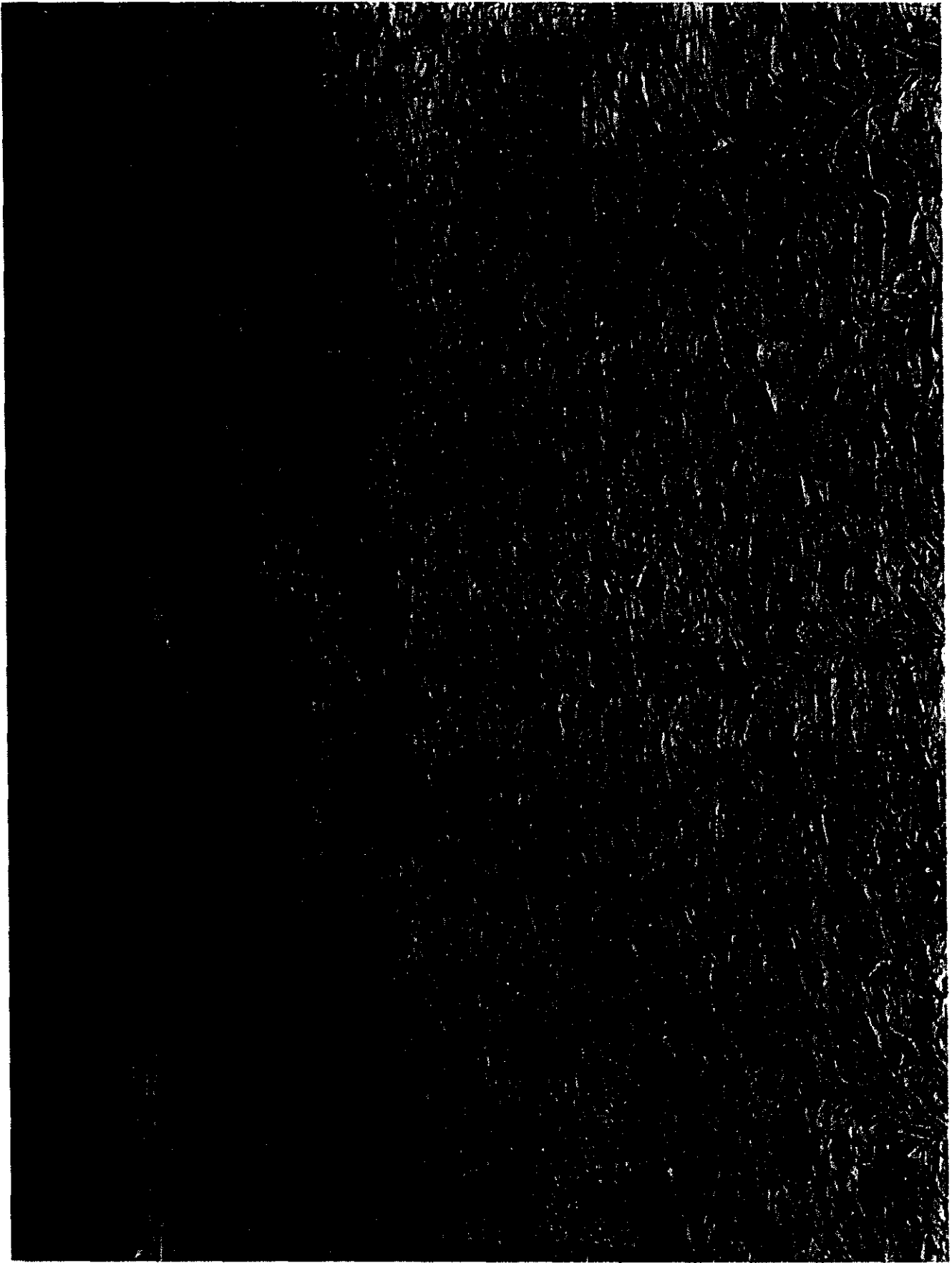


Photo 2 – Boggy Creek west of US 183
Gabion mattresses for slope stability.

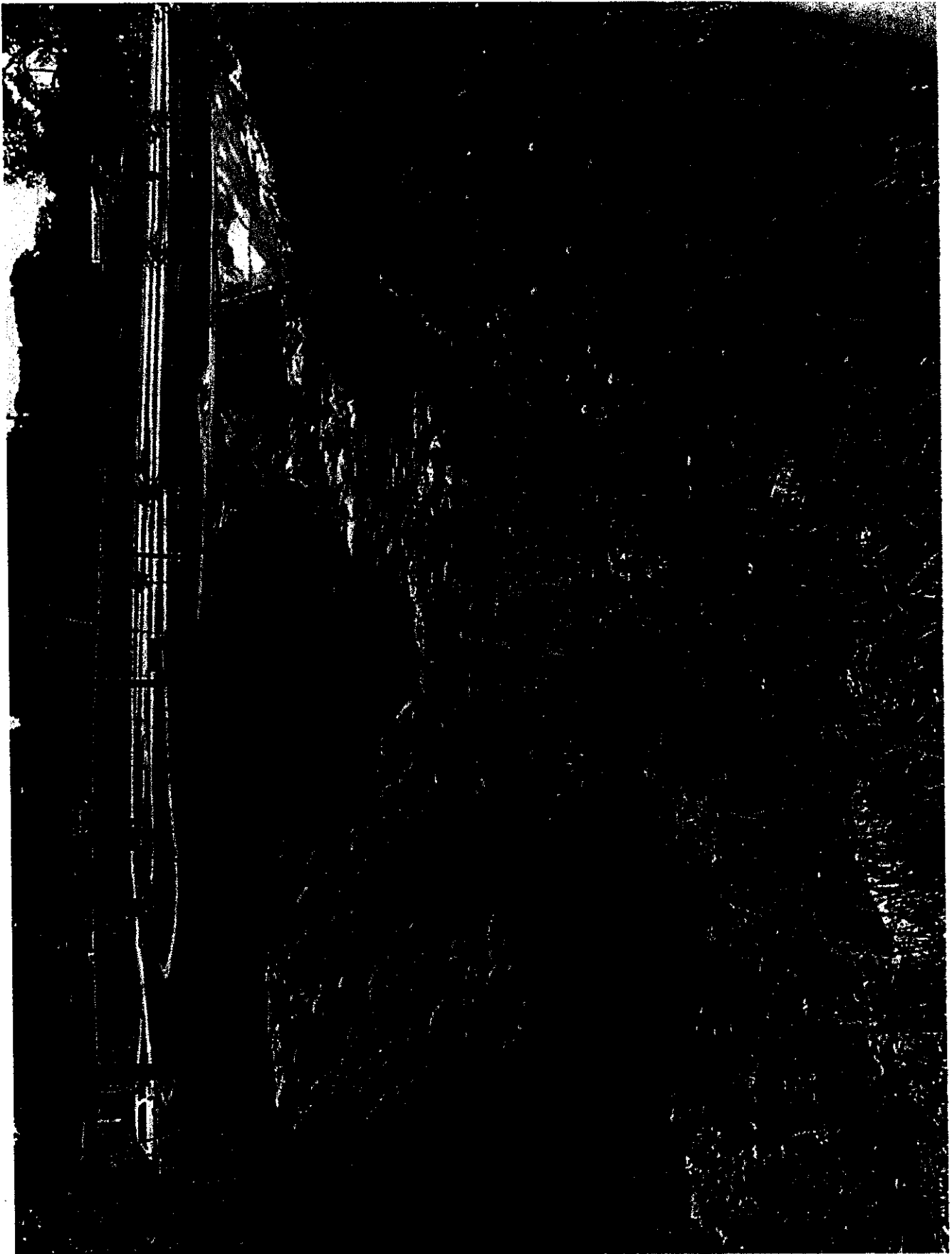


Photo 3 - Givens Park

Limestone (left) and gabion (center) slope stabilizers with limestone dissipaters in creek bed.

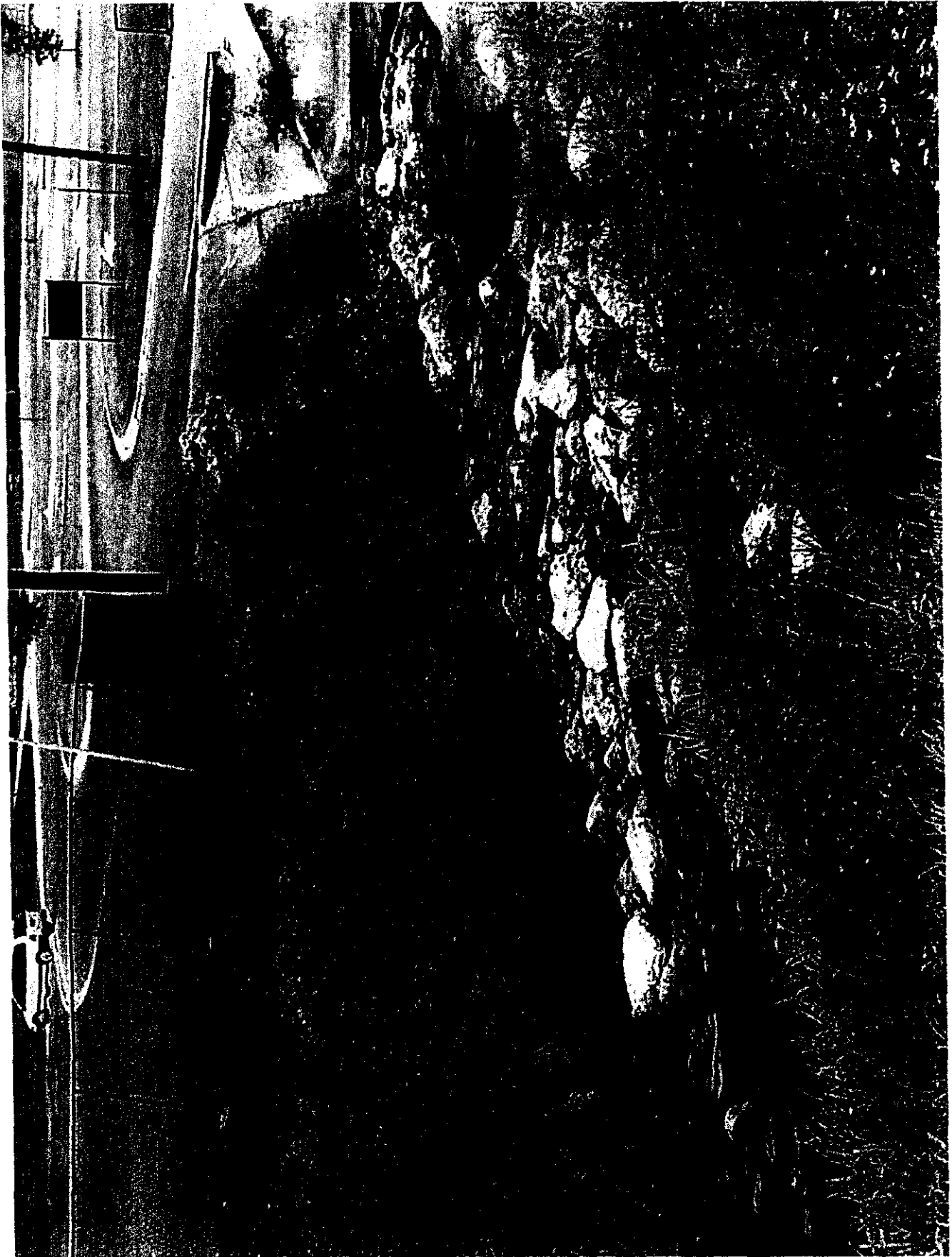


Photo 4 - Givens Park

Gabion (center) slope stabilizers with limestone dissipaters in creek bed.

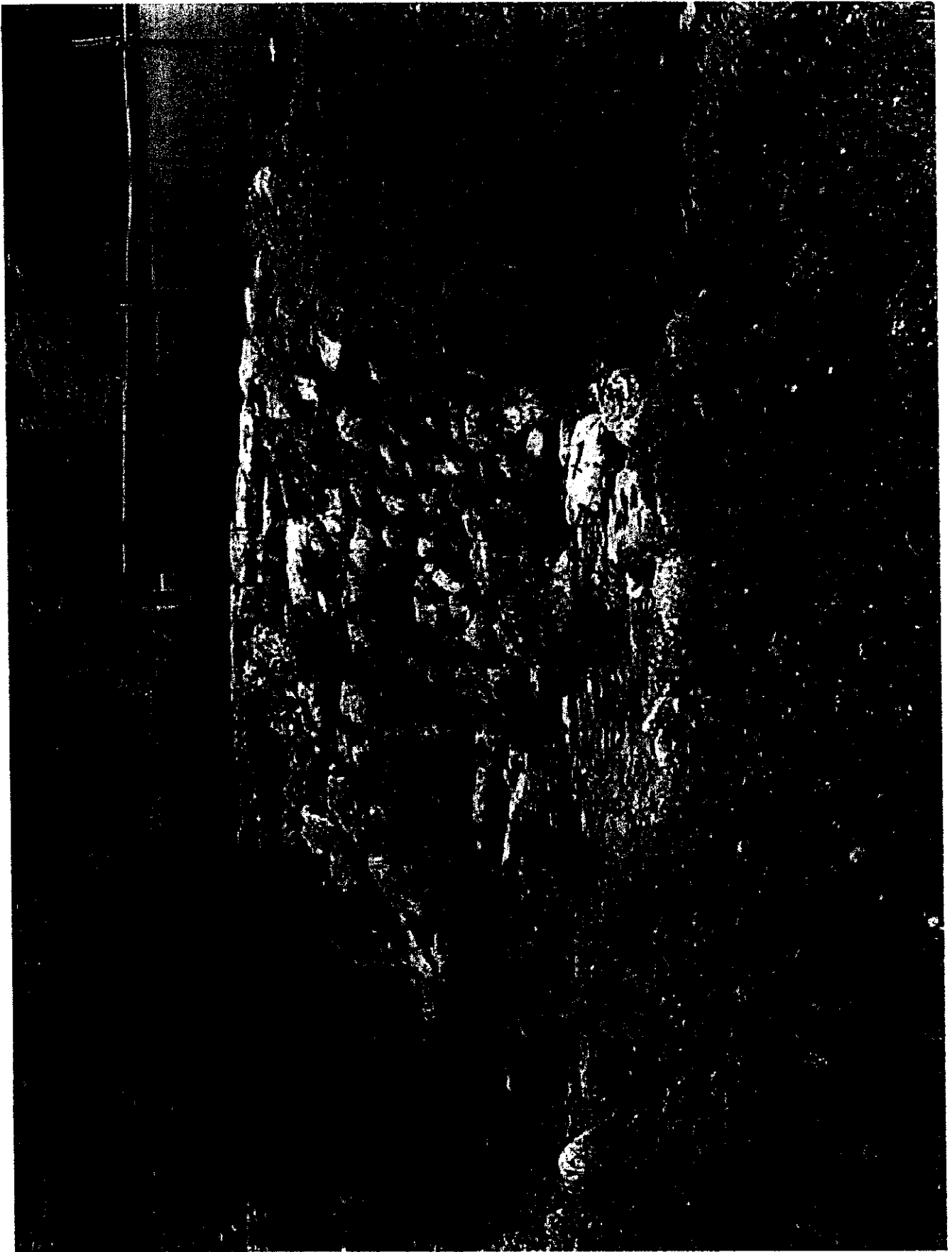


Photo 5 – Givens Park
Limestone slope stabilization

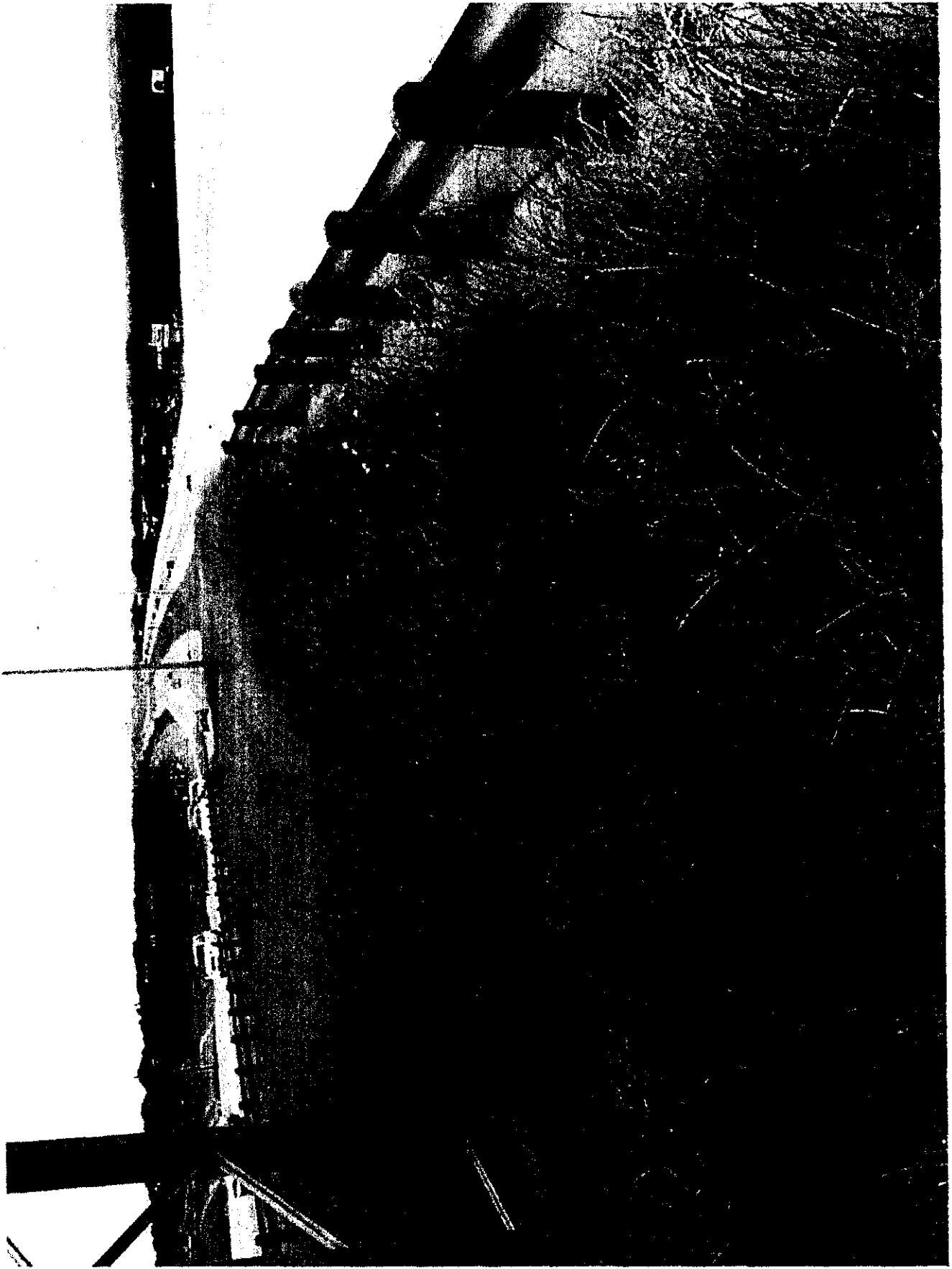


Photo 6 - US 290 West
Grass-lined swale

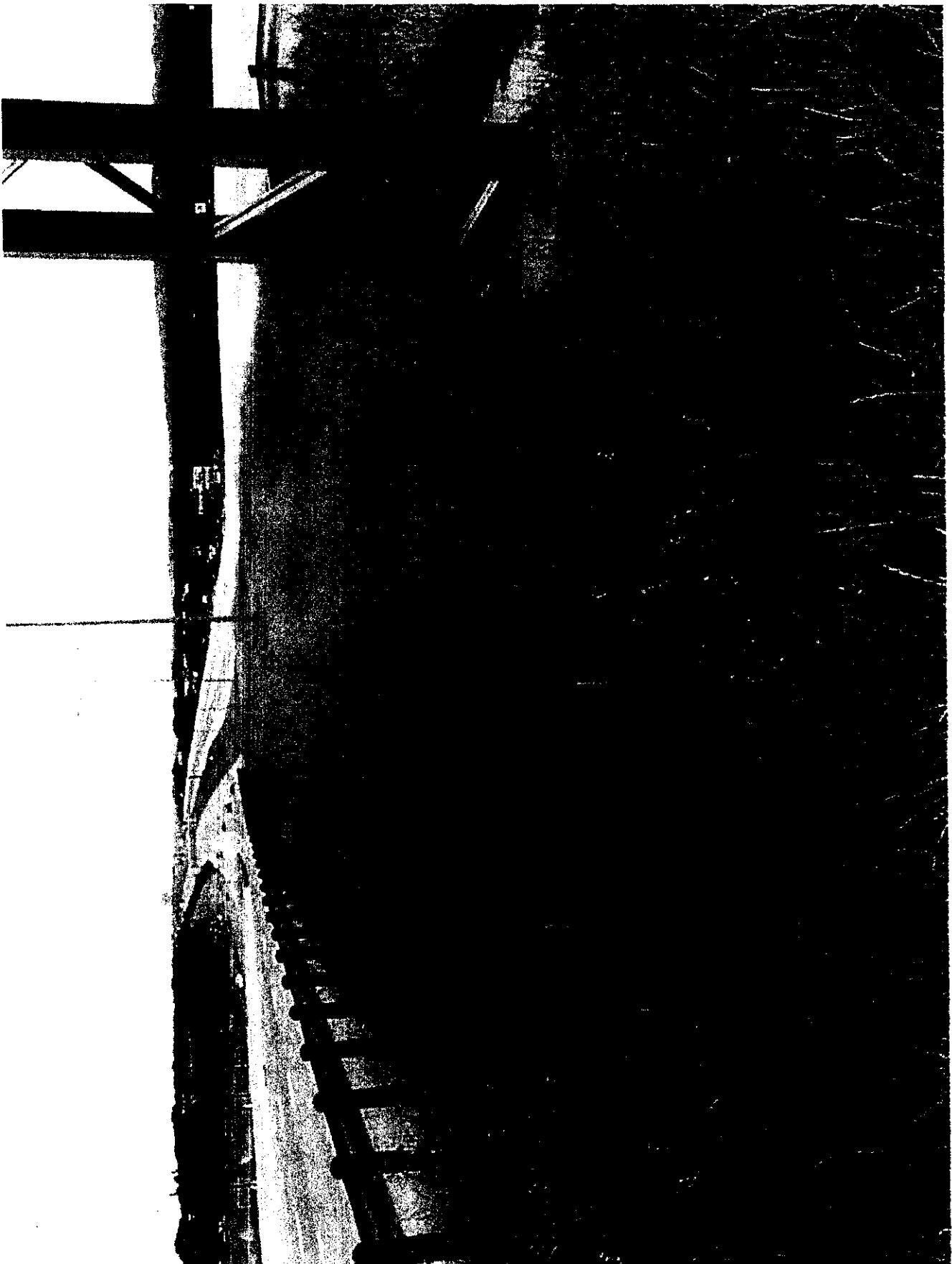


Photo 7 - US 290 West
Grass-lined swale

ATTACHMENT C
RESOLUTION

DRAFT**RESOLUTION NO. _____**

A RESOLUTION OF WILLIAMSON COUNTY TEXAS, RESOLVING TO COOPERATE WITH THE TEXAS DEPARTMENT OF TRANSPORTATION, HEREAFTER REFERRED TO AS TxDOT, BY RESERVING LAND WITHIN THE BOUNDARIES OF BERRY SPRINGS COUNTY PARK AND PRESERVE FOR DRAINAGE EASEMENTS AS PART OF IMPROVEMENTS TO INTERSTATE HIGHWAY 35 THAT ARE PART OF THE STATE HIGHWAY 130 PROJECT.

WHEREAS, Williamson County has purchased and designated land to be known as Berry Springs County Park and Preserve that is in the planning and pre-construction phase of development; and

WHEREAS, Williamson County supports the construction of SH 130 as an enhancement to the transportation system of the County and central Texas; and

WHEREAS, TxDOT has requested by letter dated May 12, 2003, that Williamson County convey land as drainage easements within the boundary of Berry Springs County Park and Preserve in order for TxDOT to comply with the Texas Edwards Aquifer Rules by treating and conveying the storm water that will enter the Edwards Aquifer at Berry Creek; and

WHEREAS, TxDOT will design and construct the drainage features within the reserved easements as specified in their letter dated May 12, 2003 and on the plans attached to that letter; and

WHEREAS, TxDOT agrees to maintain said easements to ensure proper functioning of the drainage facilities and to maintain the aesthetic appearance of the easements and the adjacent water quality protection features in a manner that is compatible with the surrounding park; and

WHEREAS, TxDOT agrees to cooperate with Williamson County to allow the county to build a hike and bike trail under the IH 35 bridges at Berry Creek; and

WHEREAS, Williamson County desires to cooperate with TxDOT by reserving drainage easements within the boundary of Berry Springs County Park and Preserve to aid in the protection of the water quality of storm water entering Berry Creek, a recharge feature for the Edwards Aquifer; and

WHEREAS, Williamson County and TxDOT desire to work together for the joint development of these easements within Berry Springs County Park and Preserve.

NOW THEREFORE BE IT RESOLVED that the Commissioners' Court of Williamson County declares and determines:

SECTION 1: That Williamson County will reserve and convey to TxDOT drainage easements within the boundary of Berry Springs County Park and Preserve, as described in the letter from TxDOT, attached herein as Attachment A, and the plan drawings, attached herein as Attachment B, for the joint use by TxDOT and Williamson County for the treatment and conveyance of storm water runoff entering Berry Creek.

SECTION 2: That Williamson County will be allowed to provide improvements to Berry Springs County Park and Preserve within said easements as part of future plans by Williamson County as long as the improvements do not hinder the use of the easements for drainage purposes, as provided in the Attached letter and plan drawings.

PASSED AND APPROVED this 20TH day of May, 2003.

John C. Doerfler 5-20-03
John C. Doerfler, County Judge
Williamson County, Texas

ATTEST:

Nancy E. Rister
Nancy E. Rister, County Clerk
Williamson County Texas

AGENDA ITEM 23

Discuss and take appropriate action on obtaining geotechnical services for Berry Springs.

Moved: **Commissioner Boatright**

Seconded: **Commissioner Hays**

Motion: To approve obtaining geotechnical services from Hall/Bargainer, Inc. in the amount of \$2,950.00 for Berry Springs Park.

Vote: **5 - 0**

Jim Rodgers mentioned the success of the soccer tournament held last weekend at the Williamson County Regional Park. He stated that they collected almost \$7,000.00 in parking fees.

<Attachment>