

**AGENDA ITEM 13**

Discuss and consider plat approval of Lake Georgetown subdivision. Pct. #3

Moved: **Commissioner Heiligenstein**

Seconded: **Commissioner Hays**

Motion: To approve the plat of Lake Georgetown subdivision. Pct. #3

Vote: 4- 0. **Commissioner Boatright** was absent from the dais.

**AGENDA ITEM 14**

Discuss and consider plat approval of Loper-Seebock subdivision. Pct. #3

Moved: **Commissioner Heiligenstein**

Seconded: **Commissioner Hays**

Motion: To approve the plat of Loper-Seebock subdivision. Pct. #3

Vote: 4- 0. **Commissioner Boatright** was absent from the dais.

<b>REGULAR AGENDA</b>
-----------------------

**AGENDA ITEM 15**

Discuss and consider preliminary plat approval of Pecan Creek Estates. Pct. #4

Moved: **Commissioner Limmer**

Seconded: **Commissioner Hays**

Motion: To approve the preliminary plat of Pecan Creek Estates with the addition of a 10 foot roadway widening easement along the north side of FM 1331.

Vote: 5 - 0

**AGENDA ITEM 16**

Hear presentation from LSI regarding SH 130 improvements and take any appropriate action.

Justin Keener from Lone Star Infrastructure made a presentation to the court regarding the aesthetic portion of SH 130. He stated the deadline for submissions to LSI was February 28, 2003.

< Attachment >

### SH 130 Symbol Selection Guidelines for Structural Accents

In summarizing the results from the public aesthetics selection process, several structural elements have been identified as being areas where local and regional symbols could be used to identify the respective local or regional area. Identified as "gateway" locations to adjacent communities, they include the future SH 130 intersections at I-35, U.S. 79, SH 45 North, U.S. 290, and SH 71.

The default symbol to be used throughout the SH 130 corridor is the Texas star. This symbol could be replaced at the "gateway" locations by approved symbols submitted by cities or counties. The elements chosen to show these symbols are end caps of the bridge bents, bridge barrier rail accents and retaining walls panels adjacent to bridge abutments.

Submissions for preferred symbols should be submitted to the Lone Star Infrastructure public outreach office. LSI will then submit the proposal to TxDOT for their review.

**The symbols should meet the following criteria to be considered:**

- 1) The symbol cannot be a registered trademark.
- 2) The symbol cannot be associated with mascots or logos (school, professional team, businesses, etc.).
- 3) The symbol should be non-controversial, attempting to unify the community rather than divide it.
- 4) The symbol should be non-offensive to members of the motoring public and local communities.
- 5) The scale and perspective of symbols should be considered in their design. Fine detail and intricate designs are discouraged in lieu of simple, bold designs that are appropriate for casting in concrete and that will be easily recognizable and clearly seen from a distance.
- 6) The symbol should be sized to fit into a 2'-6" x 2'-6" square and be compatible with the "picture framing" which will be used on all mainlane structure bent caps. The symbol design should be scalable for placement on larger end caps of taller ramp structure bents (approx. 6 to 7 ft square). The depth of the symbol cannot be greater than 1 1/2".
- 7) Retaining wall symbols may be designed to extend to a panel size of 5' x 10' or multiple adjacent 5' x 10' panels. These symbols are to be recessed into the panels no greater than the 1 1/2".
- 8) The symbol should be submitted in hard copy (11" x 17" minimum) and as a computer graphic file (jpeg, bmp, etc). Two dimensional symbols and hand sketches will be considered but will be converted to 3-D drawings by the LSI design staff if chosen to be utilized for the project. LSI reserves the right to modify submitted artwork as required to achieve a uniform style and application.

Submissions should be made through a city or county, and shall be clearly marked with submitter's name, contact information and affiliation.

All submissions should be made to the LSI public outreach office no later than February 28, 2003. TxDOT will make the final decision on symbol selection by March 15, 2003.

Questions and submissions should be directed to:

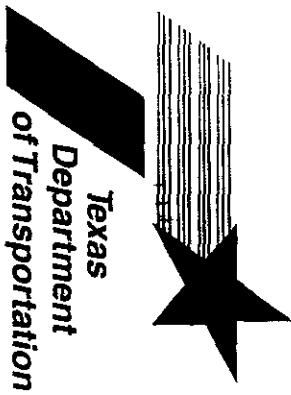
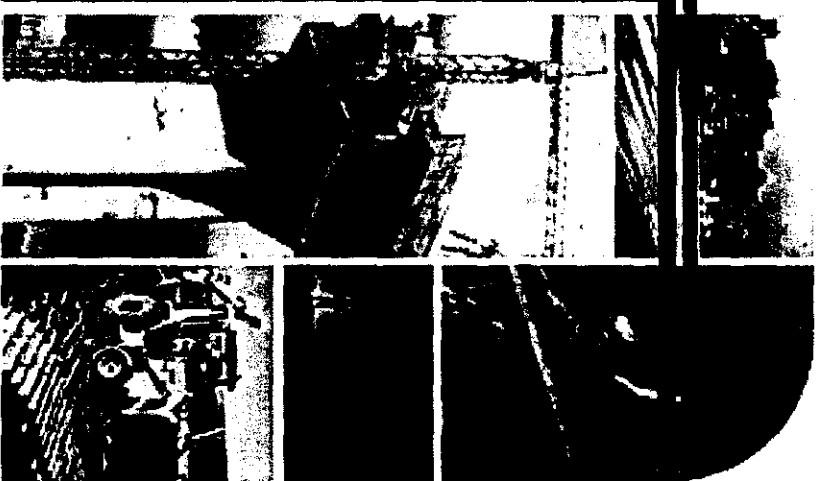
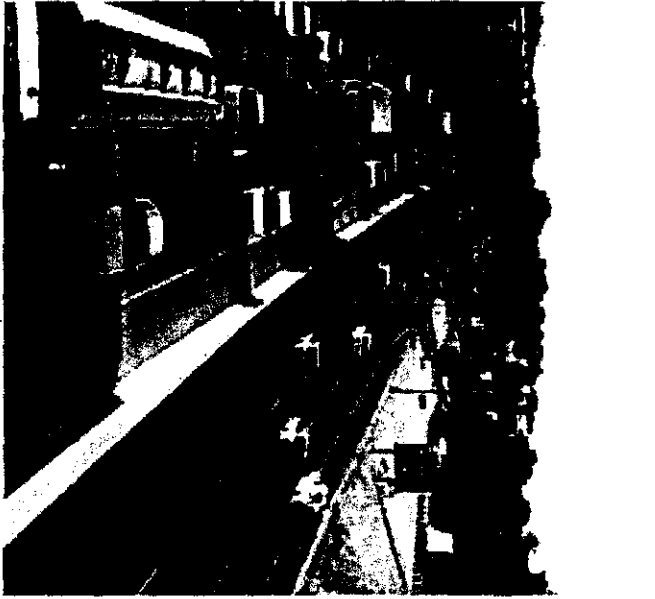
Mr. Justin Keener  
Public Outreach Director  
Lone Star Infrastructure  
1421 Wells Branch Parkway  
Pflugerville, Texas 78660  
[justin.keener@lsiv.com](mailto:justin.keener@lsiv.com)  
Phone : 512-681-6286  
Fax: 512-681-6001



Lone Star Infrastructure is a consortium of companies selected by TxDOT to design and construct SH 130. For general information on the SH 130 project, please visit [www.sh130.com](http://www.sh130.com).



# Concepts from Post Charrette Meetings



Presented on:  
January 27, 28, 29, 31, 2003

TEXAS STATE HIGHWAY 130

[www.sh130.com](http://www.sh130.com)

## RECORDERS MEMORANDUM

All or parts of the text on this page was not clearly legible for satisfactory recordation.

130  
TOLL

*Multi-Column Bent Option (Preliminary Concept Only)*



**RECORDERS MEMORANDUM**

All or parts of the text on this page was not clearly legible for satisfactory recordation.

**Round columns w/ 2' min. round smooth concrete bases @ Medium Interchanges**

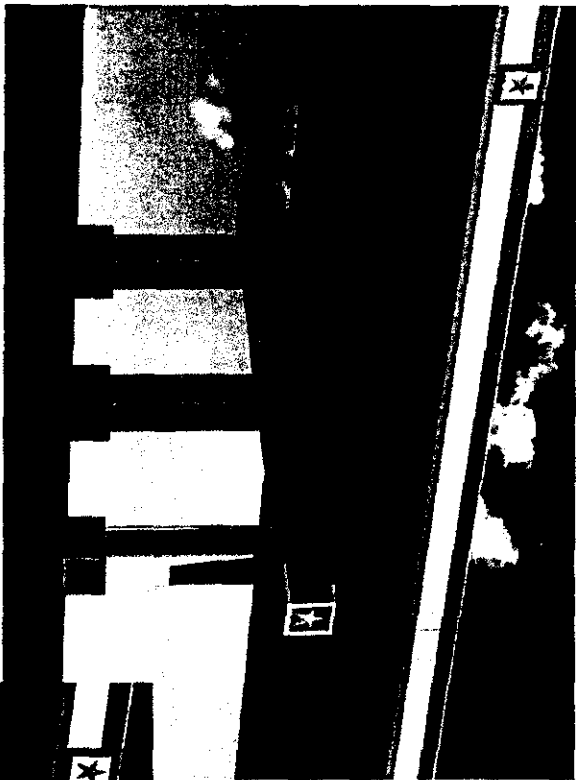
(The concept reflected in this exhibit is preliminary in nature and has not been approved by the TTA and is intended to depict a general theme under consideration).



28-0

**130**  
**TOLL**

**Multi-Column Bent Option (Preliminary Concepts Only)**



**RECORDERS MEMORANDUM**  
All or parts of the text on this page was not  
clearly legible for satisfactory recordation.

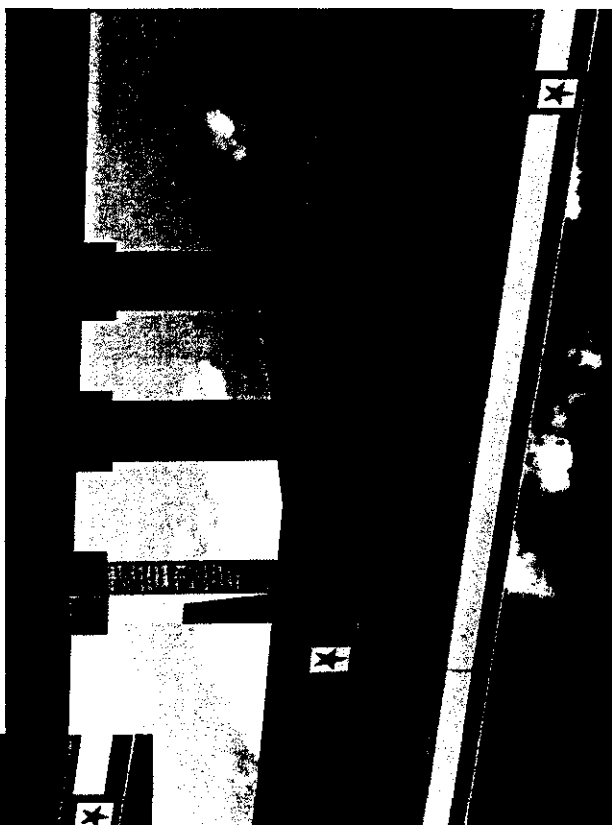
(The concepts reflected in this exhibit are preliminary in nature and have not been approved by the TTA. They are intended to depict a general themes under consideration).



TOLL

130

## Multi-Column Bent Option (Preliminary Concepts Only)

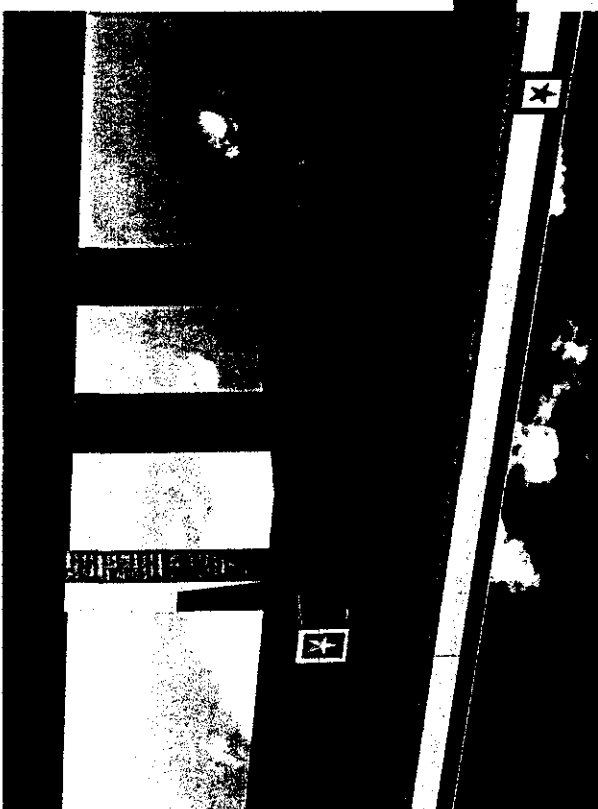


### RECORDERS MEMORANDUM

All or parts of the text on this page was not clearly legible for satisfactory recordation.



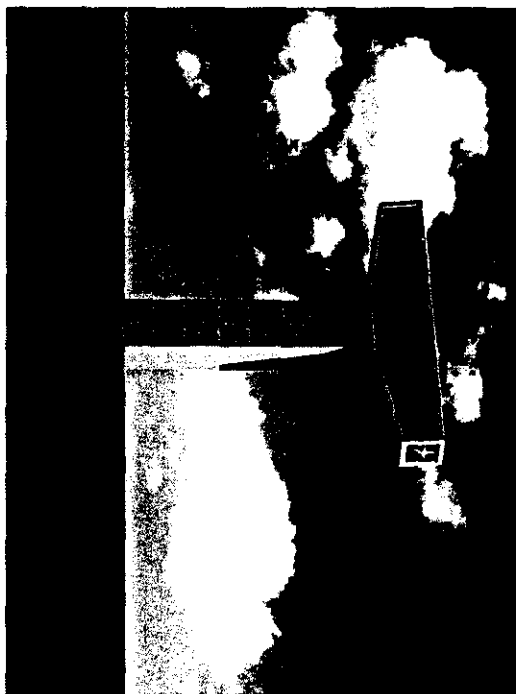
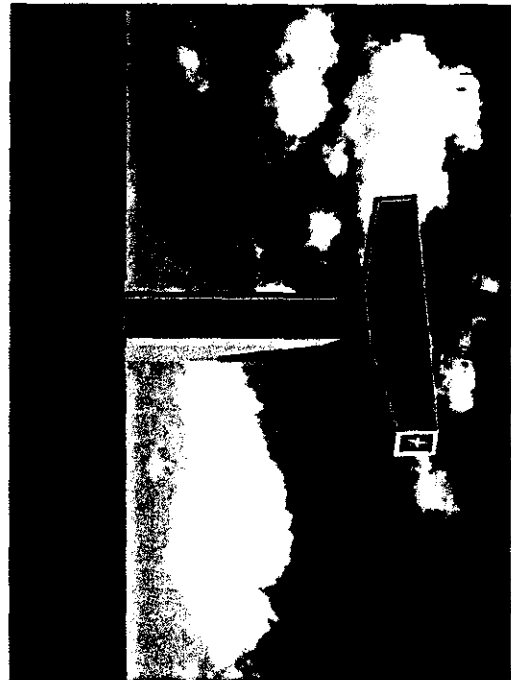
(The concepts reflected in this exhibit are preliminary in nature and have not been approved by the TTA. They are intended to depict a general themes under consideration).



TOLL

130

# Single Column Bent Option (Preliminary Concepts Only)



(The concepts reflected in this exhibit are preliminary in nature and have not been approved by the TTA. They are intended to depict a general themes under consideration).

## RECORDERS MEMORANDUM

All or parts of the text on this page was not clearly legible for satisfactory recordation.

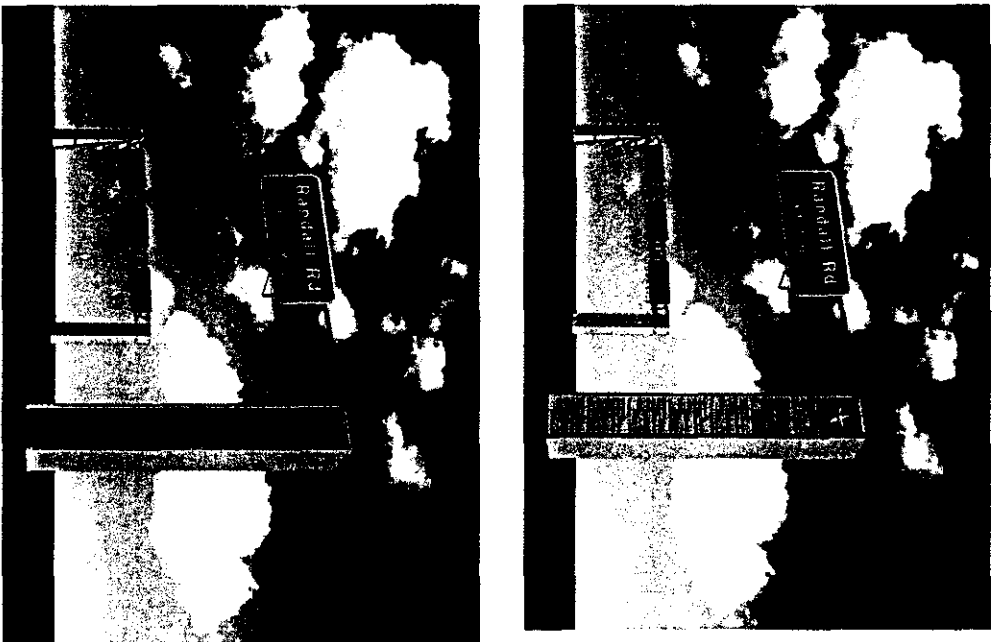
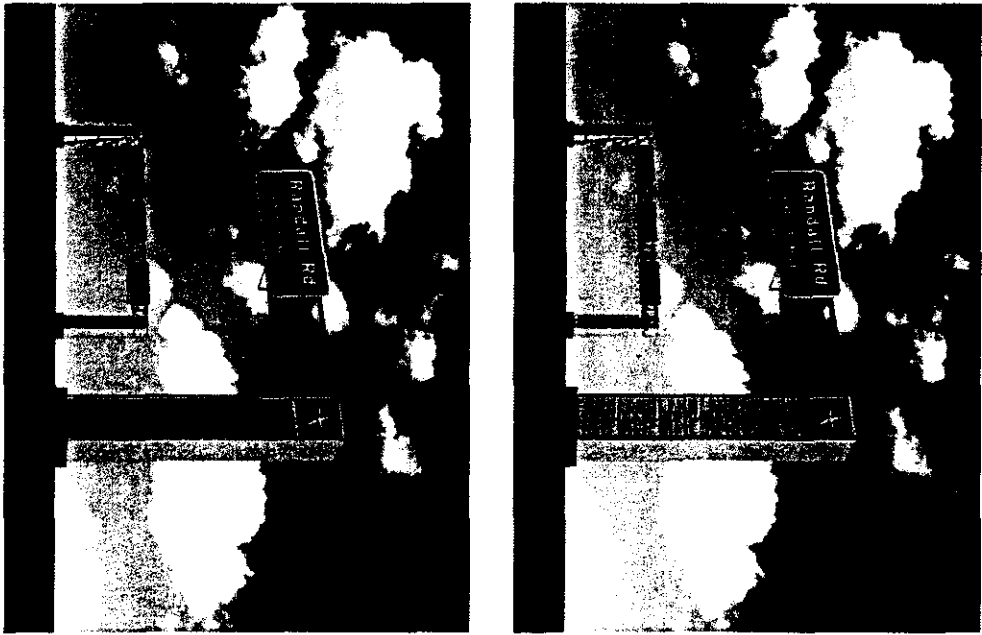




TOLL

130

## Sign Support Option (Preliminary Concepts Only)



(The concepts reflected in this exhibit are preliminary in nature and have not been approved by the TTA. They are intended to depict a general themes under consideration).

### RECORDERS MEMORANDUM

All or parts of the text on this page was not clearly legible for satisfactory recordation.



4-7

**AGENDA ITEM 17**

Hear presentation from Paul Linehan regarding the Williamson County Regional Park.

Paul Linehan stated that the dedication of the park has been postponed from February 22, 2003 until March 29, 2003.

No action was taken on this agenda item.

**AGENDA ITEM 18**

Consider allocating money from Tobacco Fund for Lawnmower Exchange Program in Williamson County.

**Commissioner Heiligenstein** stated that this was a community outreach program that has been utilized in other counties. He suggested since this program relates to air quality, that using allocated money from the Tobacco Fund to support Williamson County's participation in this program would be appropriate. He mentioned that one hour of using a gas powered lawnmower is equal to sixty miles of driving a car.

The program cost of \$8,000 would provide for the lawn mower discount, advertising and all costs associated with the event, which would be held at Home Depot in Round Rock. Scott Johnson from Environmental Strategies would be the person contracted to stage the event. A citizen who wanted to trade in a gas powered lawn mower for an electric lawnmower would receive a rebate from Home Depot.

Moved: **Commissioner Heiligenstein**

Seconded: **Commissioner Boatright**

Motion: To approve allocating \$8,000 from the Tobacco Fund for a Lawnmower Exchange Program in Williamson County.

Vote: 4 – 0. **Commissioner Hays** was absent from the dais.

< Attachment >