

**AGENDA ITEM 26**

Consider amended order changing the Commissioner and Justice of the Peace precinct lines based on 2000 census data.

Penny Redington of Bickerstaff, Heath & Austin addressed the court concerning the proposed change. She said that the change would adjust the precinct lines between Precincts 1 and 3 to allow a building that the county owns to be used for Justice of the Peace Precinct 3 and Constable Precinct 3 to be located in Precinct 3. The building is presently located in Precinct 1.

Moved: **Commissioner Hays**

Seconded: **Judge Doerfler**

Motion: To approve amended order changing the Commissioner and Justice of the Peace precinct lines based on 2000 census data.

Vote: **5 - 0**

< Attachment >

ORDER NO. \_\_\_\_\_

THE STATE OF TEXAS                   §  
  §  
THE COUNTY OF WILLIAMSON       §

**AMENDED ORDER REDRAWING WILLIAMSON COUNTY  
COMMISSIONER AND JUSTICE PRECINCT BOUNDARIES  
BASED ON 2000 CENSUS**

WHEREAS, an analysis of the 2000 decennial federal census disclosed that County commissioner precincts in Williamson County, Texas were substantially unequal in population; and

WHEREAS, the Commissioners Court of Williamson County adopted the County commissioner precinct boundaries to equalize the population of the respective districts in compliance with applicable requirements of state and federal law; and

WHEREAS, the Commissioners Court of Williamson County also adopted the justice precinct boundaries to conform their boundaries with those of the new commissioner precincts, continuing the County’s practice of having coterminous Commissioner and Justice precincts; and

WHEREAS, on August 14, 2001, the Commissioners Court of Williamson County adopted an Order Redrawing Williamson County Commissioner and Justice Precinct Boundaries Based on 2000 Census (“August 14, 2001 Order”); and

WHEREAS, the Hatton Enterprise Building, located at 301 Inner Loop, Georgetown, Texas, is a building, convenient to the people and suitable for housing offices for Commissioner and Justice Precinct 3; and

WHEREAS, the Hatton Enterprise Building is currently located in Commissioner and Justice Precinct 1; and

WHEREAS, pursuant to Texas Local Government Code, section 292.001(d), justice precinct offices must be located within the precinct they serve; and

WHEREAS, the Commissioners Court of Williamson County wishes to amend its August 14, 2001 Order to make a minor boundary change to Commissioner and Justice Precincts 1 and 3, which change is the shifting of an unpopulated area of one census block (Census Block 1057) from Commissioner and Justice Precinct 1 to Commissioner and Justice Precinct 3 so that the Hatton Enterprise Building can properly serve as office space for Commissioner and Justice Precinct 3.

NOW THEREFORE BE IT ORDERED, pursuant to the United States Constitution, the Texas Constitution, applicable Texas Statutes and the Voting Rights Act of 1965, as amended, that effective immediately upon preclearance, Williamson County, Texas shall be divided into four (4) County commissioner and justice precincts as depicted in Exhibit A, to this Order, which is a map denoted “Plan MH4-Revision 2”, accurately depicting the boundaries and territories of the

---

respective commissioner and justice precincts as redrawn, and which map is incorporated by reference into and made a part of this Order; and Exhibit B, to this Order, which is a list of 2000 Census blocks assigned to each respective commissioner and justice precinct, and which list is incorporated by reference into and made a part of this Order.

BE IT SO ORDERED.

Adopted on this 13 day of August 2002.

WILLIAMSON COUNTY, TEXAS

John C. Doerfler  
John C. Doerfler, County Judge

Mike Heiligenstein  
Mike Heiligenstein, Commissioner, Precinct 1

Greg Boatright  
Greg Boatright, Commissioner, Precinct 2

David Hays  
David Hays, Commissioner, Precinct 3

Frankie Limmer  
Frankie Limmer, Commissioner, Precinct 4

ATTEST:

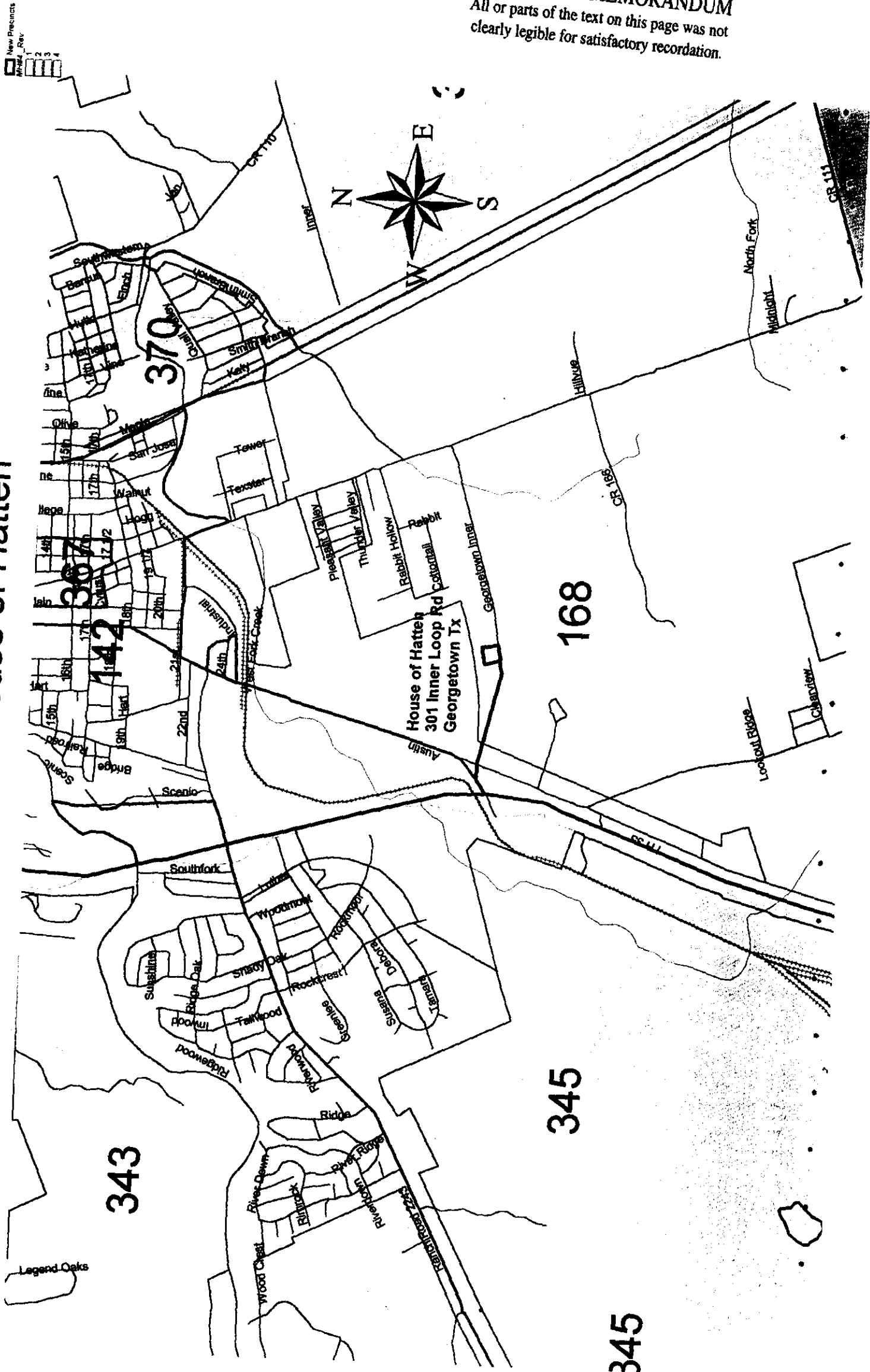
Nancy E. Rister  
Williamson County Clerk



**EXHIBIT A**

RECORDERS MEMORANDUM  
All or parts of the text on this page was not  
clearly legible for satisfactory recordation.

MH4#\_Revision for the House of Hatten



**EXHIBIT B**

Block and VTD Summary - Williamson County Commissioner and Justice Precincts  
Plan MH4 Revision 2  
August 7, 2002

The following list indicates the Census block effected by Plan MH4 and is sorted by current VTD.

The comments column explains the change per plan or suggested change to make cleaner lines.

Example: The census block 484910205011008 is currently in VTD 0360 and will be in District 1.

The first line is a suggestion to use the center of IH 35 vs the access rd.

STFID	Tract	BlkGrp	Block	BlockVTD	District	Comment
484910207031078	020703	1	Block 1078	1078 0135	4	suggest use center of IH 35 vs access rd for District line
484910207042002	020704	2	Block 2002	2002 0172	4	vid had error of 172 when pct really was 480
484910207042003	020704	2	Block 2003	2003 0172	4	vid had error of 172 when pct really was 480
484910207042004	020704	2	Block 2004	2004 0172	4	vid had error of 172 when pct really was 480
484910207042005	020704	2	Block 2005	2005 0172	4	vid had error of 172 when pct really was 480
484910207042006	020704	2	Block 2006	2006 0172	4	vid had error of 172 when pct really was 480
484910207042007	020704	2	Block 2007	2007 0172	4	vid had error of 172 when pct really was 480
484910205022996	020502	2	Block 2996	2996 0204	1	suggest use center of a Brushy Creek for District line
484910205022997	020502	2	Block 2997	2997 0204	1	suggest use center of a Brushy Creek for District line
484910205022998	020502	2	Block 2998	2998 0204	1	suggest use center of a Brushy Creek for District line
484910203096998	020309	6	Block 6996	6996 0331	2	suggest use center of a Brushy Creek for District line
484910205022041	020502	2	Block 2041	2041 0331	1	moved per MH4 plan
484910205022042	020502	2	Block 2042	2042 0331	1	moved per MH4 plan
484910205022043	020502	2	Block 2043	2043 0331	1	moved per MH4 plan
484910205022044	020502	2	Block 2044	2044 0331	1	moved per MH4 plan
484910205022045	020502	2	Block 2045	2045 0331	1	moved per MH4 plan
484910205022046	020502	2	Block 2046	2046 0331	1	moved per MH4 plan
484910205022047	020502	2	Block 2047	2047 0331	1	moved per MH4 plan
484910205022048	020502	2	Block 2048	2048 0331	1	moved per MH4 plan
484910205022049	020502	2	Block 2049	2049 0331	1	moved per MH4 plan
484910205022050	020502	2	Block 2050	2050 0331	1	moved per MH4 plan
484910205022051	020502	2	Block 2051	2051 0331	1	moved per MH4 plan
484910205022052	020502	2	Block 2052	2052 0331	1	moved per MH4 plan
484910205022053	020502	2	Block 2053	2053 0331	1	moved per MH4 plan
484910205022054	020502	2	Block 2054	2054 0331	1	moved per MH4 plan
484910205022055	020502	2	Block 2055	2055 0331	1	moved per MH4 plan
484910205022056	020502	2	Block 2056	2056 0331	1	moved per MH4 plan
484910205022057	020502	2	Block 2057	2057 0331	1	moved per MH4 plan
484910205022058	020502	2	Block 2058	2058 0331	1	moved per MH4 plan
484910205022059	020502	2	Block 2059	2059 0331	1	moved per MH4 plan
484910205022060	020502	2	Block 2060	2060 0331	1	moved per MH4 plan

Prepared By Williamson County Elections

Updated By Bickerstaff, Heath, Smiley, Pollan, Kever & McDaniel, L.L.P. (August 7, 2002)

484910205022061	020502	2	Block 2061	2061	0331	1	moved per MH4 plan
484910205022063	020502	2	Block 2063	2063	0331	1	moved per MH4 plan
484910205022064	020502	2	Block 2064	2064	0331	1	moved per MH4 plan
484910205022065	020502	2	Block 2065	2065	0331	1	moved per MH4 plan
484910205022066	020502	2	Block 2066	2066	0331	1	moved per MH4 plan
484910205022067	020502	2	Block 2067	2067	0331	1	moved per MH4 plan
484910205022999	020502	2	Block 2999	2999	0331	1	moved per MH4 plan
484910205011008	020501	1	Block 1008	1008	0360	1	moved per MH4 plan
484910205011009	020501	1	Block 1009	1009	0360	1	moved per MH4 plan
484910205011010	020501	1	Block 1010	1010	0360	1	moved per MH4 plan
484910205011013	020501	1	Block 1013	1013	0360	1	moved per MH4 plan
484910205011014	020501	1	Block 1014	1014	0360	1	moved per MH4 plan
484910205011015	020501	1	Block 1015	1015	0360	1	moved per MH4 plan
484910205011016	020501	1	Block 1016	1016	0360	1	moved per MH4 plan
484910205011017	020501	1	Block 1017	1017	0360	1	moved per MH4 plan
484910205011018	020501	1	Block 1018	1018	0360	1	moved per MH4 plan
484910205011019	020501	1	Block 1019	1019	0360	1	moved per MH4 plan
484910205011020	020501	1	Block 1020	1020	0360	1	moved per MH4 plan
484910205011021	020501	1	Block 1021	1021	0360	1	moved per MH4 plan
484910205011022	020501	1	Block 1022	1022	0360	1	moved per MH4 plan
484910205011023	020501	1	Block 1023	1023	0360	1	moved per MH4 plan
484910205011024	020501	1	Block 1024	1024	0360	1	moved per MH4 plan
484910205011025	020501	1	Block 1025	1025	0360	1	moved per MH4 plan
484910205011026	020501	1	Block 1026	1026	0360	1	moved per MH4 plan
484910205011027	020501	1	Block 1027	1027	0360	1	moved per MH4 plan
484910205011028	020501	1	Block 1028	1028	0360	1	moved per MH4 plan
484910205011029	020501	1	Block 1029	1029	0360	1	moved per MH4 plan
484910205011030	020501	1	Block 1030	1030	0360	1	moved per MH4 plan
484910205011031	020501	1	Block 1031	1031	0360	1	moved per MH4 plan
484910205011032	020501	1	Block 1032	1032	0360	1	moved per MH4 plan
484910205011033	020501	1	Block 1033	1033	0360	1	moved per MH4 plan
484910205011034	020501	1	Block 1034	1034	0360	1	moved per MH4 plan
484910205011035	020501	1	Block 1035	1035	0360	1	moved per MH4 plan
484910205011036	020501	1	Block 1036	1036	0360	1	moved per MH4 plan
484910205011037	020501	1	Block 1037	1037	0360	1	moved per MH4 plan
484910205011038	020501	1	Block 1038	1038	0360	1	moved per MH4 plan
484910205011039	020501	1	Block 1039	1039	0360	1	moved per MH4 plan



484910205011040	020501	1	Block 1040	1040	0360	1	moved per MH4 plan
484910205011041	020501	1	Block 1041	1041	0360	1	moved per MH4 plan
484910205011042	020501	1	Block 1042	1042	0360	1	moved per MH4 plan
484910205011043	020501	1	Block 1043	1043	0360	1	moved per MH4 plan
484910205011044	020501	1	Block 1044	1044	0360	1	moved per MH4 plan
484910205011045	020501	1	Block 1045	1045	0360	1	moved per MH4 plan
484910205011046	020501	1	Block 1046	1046	0360	1	moved per MH4 plan
484910205011047	020501	1	Block 1047	1047	0360	1	moved per MH4 plan
484910205011048	020501	1	Block 1048	1048	0360	1	moved per MH4 plan
484910205011049	020501	1	Block 1049	1049	0360	1	moved per MH4 plan
484910205011050	020501	1	Block 1050	1050	0360	1	moved per MH4 plan
484910205011051	020501	1	Block 1051	1051	0360	1	moved per MH4 plan
484910205011052	020501	1	Block 1052	1052	0360	1	moved per MH4 plan
484910205011053	020501	1	Block 1053	1053	0360	1	moved per MH4 plan
484910205011054	020501	1	Block 1054	1054	0360	1	moved per MH4 plan
484910205011055	020501	1	Block 1055	1055	0360	1	moved per MH4 plan
484910205011056	020501	1	Block 1056	1056	0360	1	moved per MH4 plan
484910205011057	020501	1	Block 1057	1057	0360	1	moved per MH4 plan
484910205011058	020501	1	Block 1058	1058	0360	1	moved per MH4 plan
484910205011059	020501	1	Block 1059	1059	0360	1	moved per MH4 plan
484910205011060	020501	1	Block 1060	1060	0360	1	moved per MH4 plan
484910205011061	020501	1	Block 1061	1061	0360	1	moved per MH4 plan
484910205011062	020501	1	Block 1062	1062	0360	1	moved per MH4 plan
484910205011063	020501	1	Block 1063	1063	0360	1	moved per MH4 plan
484910205011064	020501	1	Block 1064	1064	0360	1	moved per MH4 plan
484910205011065	020501	1	Block 1065	1065	0360	1	moved per MH4 plan
484910205011066	020501	1	Block 1066	1066	0360	1	moved per MH4 plan
484910205011067	020501	1	Block 1067	1067	0360	1	moved per MH4 plan
484910205011068	020501	1	Block 1068	1068	0360	1	moved per MH4 plan
484910205011069	020501	1	Block 1069	1069	0360	1	moved per MH4 plan
484910205011070	020501	1	Block 1070	1070	0360	1	moved per MH4 plan
484910205011071	020501	1	Block 1071	1071	0360	1	moved per MH4 plan
484910205011072	020501	1	Block 1072	1072	0360	1	moved per MH4 plan
484910205011073	020501	1	Block 1073	1073	0360	1	moved per MH4 plan
484910205011074	020501	1	Block 1074	1074	0360	1	moved per MH4 plan
484910205011075	020501	1	Block 1075	1075	0360	1	moved per MH4 plan
484910205011076	020501	1	Block 1076	1076	0360	1	moved per MH4 plan

484910205011077	020501	1	Block 1077	1077	0360	1	moved per MH4 plan
484910205011078	020501	1	Block 1078	1078	0360	1	moved per MH4 plan
484910205011079	020501	1	Block 1079	1079	0360	1	moved per MH4 plan
484910205011080	020501	1	Block 1080	1080	0360	1	moved per MH4 plan
484910205011081	020501	1	Block 1081	1081	0360	1	moved per MH4 plan
484910205011082	020501	1	Block 1082	1082	0360	1	moved per MH4 plan
484910205011083	020501	1	Block 1083	1083	0360	1	moved per MH4 plan
484910205011084	020501	1	Block 1084	1084	0360	1	moved per MH4 plan
484910205011085	020501	1	Block 1085	1085	0360	1	moved per MH4 plan
484910205011086	020501	1	Block 1086	1086	0360	1	moved per MH4 plan
484910205011087	020501	1	Block 1087	1087	0360	1	moved per MH4 plan
484910205011088	020501	1	Block 1088	1088	0360	1	moved per MH4 plan
484910205011089	020501	1	Block 1089	1089	0360	1	moved per MH4 plan
484910205011090	020501	1	Block 1090	1090	0360	1	moved per MH4 plan
484910205011091	020501	1	Block 1091	1091	0360	1	moved per MH4 plan
484910205011092	020501	1	Block 1092	1092	0360	1	moved per MH4 plan
484910205011093	020501	1	Block 1093	1093	0360	1	moved per MH4 plan
484910205011094	020501	1	Block 1094	1094	0360	1	moved per MH4 plan
484910205011095	020501	1	Block 1095	1095	0360	1	moved per MH4 plan
484910205011099	020501	1	Block 1099	1099	0360	1	moved per MH4 plan
484910205011105	020501	1	Block 1105	1105	0360	1	moved per MH4 plan
484910201011114	020101	2	Block 1114	1114	0379	3	vid had error of 379 when pct really was 381
484910207013034	020701	3	Block 3034	3034	0455	1	moved per MH4 plan
484910207032008	020703	2	Block 2008	2008	0455	1	split/move for retail business
484910207032008	020703	2	Block 2008	2008	0455	4	split for retail business

\*484910214031057

Block 1057

Split between Commissioner and Justice Precinct 1 and 3. Population is allocated to Commissioner and Justice Precinct 1. Commissioner and Justice Precinct 3 portion only contains the House of Hatton. This was adopted August 13, 2002.

The following list indicates that the  
"whole" VTD is included in the  
Proposed Commissioner Court District.

<u>VTD</u>	<u>Proposed District</u>
0119	1
0122	1
0135	1
0137	1
0138	1
0142	1
0146	1
0147	1
0149	1
0150	1
0151	1
0152	1
0162	1
0168	1
0360	1
0203	2
0204	2
0206	2
0207	2
0216	2
0217	2
0218	2
0239	2
0244	2
0253	2
0254	2
0258	2
0259	2
0264	2
0265	2
0266	2
0273	2
0274	2
0275	2
0276	2
0277	2
0278	2
0301	3
0302	3
0305	3
0308	3
0309	3
0310	3
0311	3
0312	3

0314	3
0330	3
0332	3
0340	3
0343	3
0345	3
0348	3
0357	3
0361	3
0367	3
0369	3
0370	3
0371	3
0379	3
0381	3
0413	4
0415	4
0420	4
0421	4
0423	4
0424	4
0425	4
0426	4
0427	4
0428	4
0429	4
0433	4
0434	4
0436	4
0441	4
0456	4
0463	4
0480	4

The following list indicates that  
the VTD is "split" into the two  
Proposed Commissioner Court District.

Split

<u>VTD</u>	<u>Proposed District</u>
0331	Split 1 & 3
0172	Split 1 & 4
0455	Split 1 & 4

**SPLIT CENSUS BLOCK # 0207032008  
WILLIAMSON COUNTY, TEXAS**

**NOTE:** We certify that the territory described below does not contain any population.

**BEGINNING** at the north right of way of Dell Way at its intersection with the east right of way of the Interstate Highway 35 access road;

**THENCE** northerly with said access road 550 feet;

**THENCE** easterly at a 90 degree angle approximately 420 feet to a point of intersection with the Dell, Inc., property line;

**THENCE** south southeasterly with said property line to its intersection with the south right of way of Dell Way;

**THENCE** south southeasterly 2,047 feet with a straight extension of said property line to its intersection with the north right of way of the expanded Louis Henna Blvd;

**THENCE** east southeasterly with said right of way line to its intersection with the east right of way of the Interstate Highway 35 access road;

**THENCE** north northwesterly with said right of way to the place of **BEGINNING**.

08-08-2002  
SLIT CENSUS BLOCK #0214031057  
WILLIAMSON COUNTY, TEXAS

**NOTE: We certify that the territory described below does not contain any population.**

**BEGINNING** at the intersection of IH35 and Austin Ave north easterly approximately 0.07 miles to the beginning of Inner Loop;

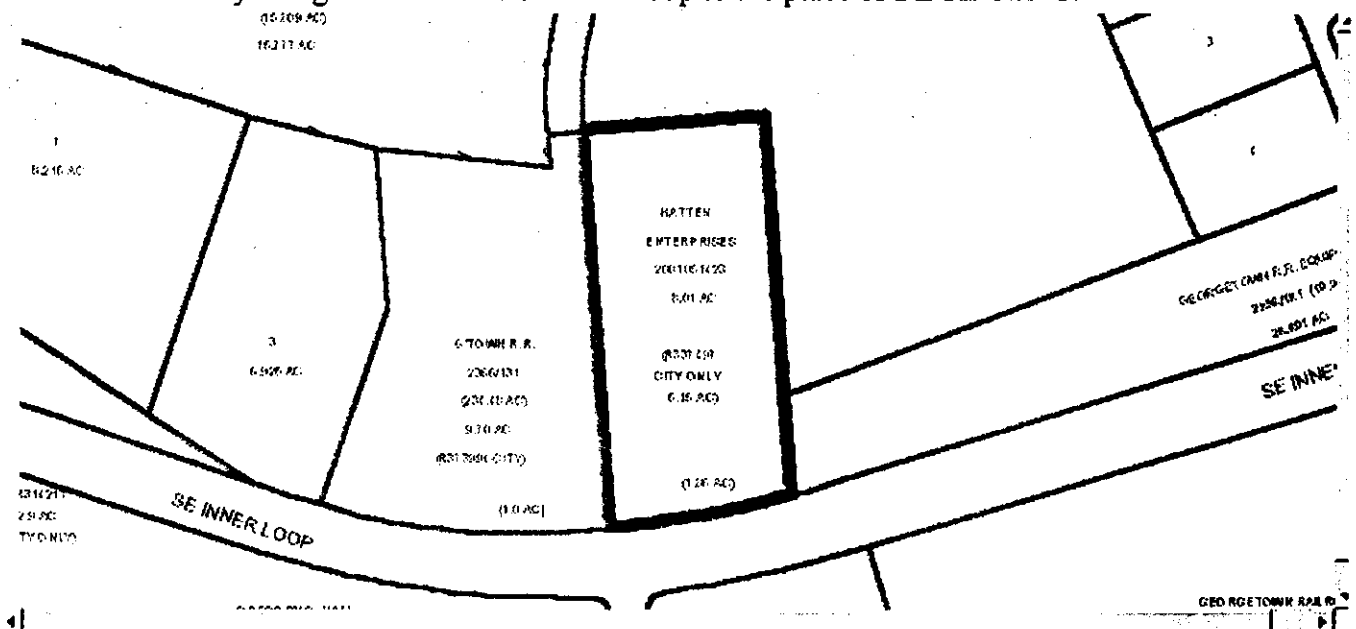
THENCE south easterly along the centerline of Inner Loop approximately 0.036 miles to the southwest property line of the House of Hatten;

**THENCE** follow this property line in a northern direction approximately 886 feet to the rear of this property;

**THENCE** follow this property line in an easterly direction approximately 400 feet to the east side property line;

**THENCE follow this property line in southerly direction approximately 845 feet to where it rejoins Inner Loop;**

**THENCE** westerly along the centerline of Inner Loop to the place of **BEGINNING**.



# RECORDERS MEMORANDUM

All or parts of the text on this page was not clearly legible for satisfactory recordation.

**AGENDA ITEM 27**

Consider reimbursing Linda Martin \$21.17 for mileage.

Moved: **Commissioner Boatright**

Seconded: **Judge Doerfler**

Motion: To approve reimbursement to Linda Martin of \$21.17 for mileage.

Vote: **5 - 0**

< Attachment >