

AGENDA ITEM 22

Hold public hearing for regulatory signage on a portion of Harvest Moon Drive.

At 10:15 a.m. Judge Doerfler announced public hearing open for discussion for regulatory signage on a portion of Harvest Moon Drive.

County Engineer Joe England discussed Harvest Moon Drive and answered all questions.

At 10:18 a.m., Judge Doerfler announced public hearing closed for discussion for regulatory signage on a portion of Harvest Moon Drive.

AGENDA ITEM 23

Discuss and take appropriate action for regulatory signage on portion of Harvest Moon Drive.

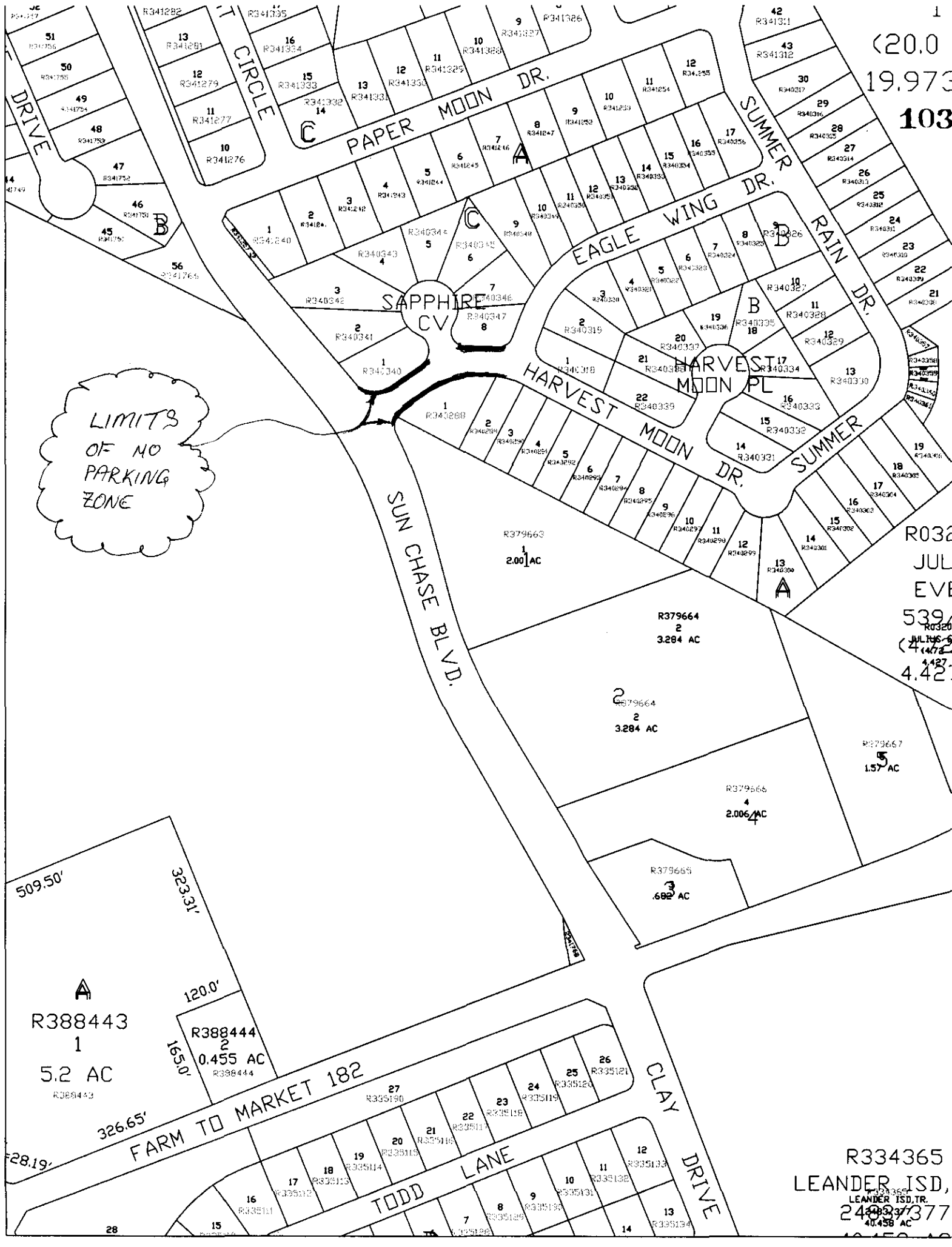
Moved: **Commissioner Boatright**

Seconded: **Commissioner Hays**

Motion: To approve "No Parking" zone on Harvest Moon Drive up to Eagle Wing Drive.

Vote: Motion carried 5 – 0

< Clerk copy here >



1
(20.0
19.973
103

LIMITS
OF NO
PARKING
ZONE

R032
JUL
EVE
539
(4.42
4.42

R334365
LEANDER, ISD,
LEANDER ISD, TR.
248337377
40.458 AC

AGENDA ITEM 24

Discuss and take appropriate action to rescind the action of Commissioners Court in 1998 regarding preliminary approval of Salado Creek Ranches, Phases One, Two and Three.

Moved: **Commissioner Heiligenstein**

Seconded: **Commissioner Boatright**

Motion: To rescind 1998 Commissioners' Court action regarding preliminary plat approval of Salado Creek Ranches, Phases One, Two and Three recorded in Volume 100, Page 710 of the Commissioners' Court Minutes.

Vote: Motion carried 5 – 0

AGENDA ITEM 25

Discuss and take appropriate action to rescind the action of the Commissioners Court on October 20, 1998, regarding final plat approval of Salado Creek Ranches, Phase One.

Moved: **Commissioner Heiligenstein**

Seconded: **Commissioner Boatright**

Motion: To rescind October 20, 1998, Commissioners' Court action regarding final plat approval of Salado Creek Ranches, Phase One recorded in Volume 100, Page 710 of Commissioners' Court minutes for abandonment of plat.

Vote: Motion carried 5 – 0

< Clerk copy here >