

AGENDA:MINUTES\*\*of theWILLIAMSON COUNTY COMMISSIONERS COURT MEETINGDecember 2, 1997

THE STATE OF TEXAS            )(

COUNTY OF WILLIAMSON        )( BE IT REMEMBERED that at 9:30 a.m. on this the 2nd day of December A.D., 1997, there was begun and holden a SPECIAL SESSION of the Commissioners Court of Williamson County, Texas, the following members being present, to-wit:

JOHN C. DOERFLER, County Judge  
 MICHAEL L. HEILIGENSTEIN, Commissioner, Precinct 1  
 GREGORY W. BOATRIGHT, Commissioner, Precinct 2  
 DAVID S. HAYS, Commissioner, Precinct 3  
 JERRY L. MEHEVEC, Commissioner, Precinct 4  
 EUGENE D. TAYLOR, County Attorney  
 ELAINE BIZZELL, County Clerk  
 DAVID U. FLORES, County Auditor

AGENDA ITEM # 1December 2, 1997

Hear any interested persons, consider forming the next agenda, or adding any emergency items to today's agenda.

County Attorney Gene Taylor recommended utilizing persons doing community service for projects within Williamson County such as painting the livestock showbarn.

AGENDA ITEM # 2December 2, 1997

Read and approve the minutes of the last meeting.

Moved: Commissioner Boatright

Seconded: Commissioner Hays

Motion: To approve the minutes of the November 25, 1997 meeting.

Vote: Motion carried 5 - 0

AGENDA ITEM # 3December 2, 1997

Hear County Auditor concerning invoices and bills, including addendum, submitted for payment and take appropriate action including but not limited to approval for payment provided said items are found by the County Auditor to be legal obligations of the county.

Moved: Commissioner Boatright

Seconded: Judge Doerfler

Motion: To authorize the payment of \$636,562.49 in computer print-out and include the addendum of bills, from the proper line items, if found by the County Auditor to be legal expenses as appropriated in the 1997/98 County Budget.

Vote: Motion carried 5 - 0

< Clerk copy here >

VOL 0094 PAGE 124

Vendor.....	Invoice Id	Inv Date	Account Number	Expense Amount	Description..
<i>approved 12-2-97 John C. Dwyer</i>					
208					
JARRELL I.S.D.	252540	10/31/97	100-200-2000	\$ 7,725.47	OCT 97, TAX DISBURSEMENTS, TAX A/C
DONAHOE CREEK WSD	252541	10/31/97	100-200-2000	28.16	OCT 97, TAX DISBURSEMENTS, TAX A/C
CITY OF HUTTO	252542	10/31/97	100-200-2000	1,136.06	OCT 97, TAX DISBURSEMENTS, TAX A/C
THRALL ISD	252543	10/31/97	100-200-2000	5,408.72	OCT 97, TAX DISBURSEMENTS, TAX A/C
CITY OF THRALL	252544	10/31/97	100-200-2000	725.02	OCT 97, TAX DISBURSEMENTS, TAX A/C
WILLIAMSON CO FIRE DIST #2	252545	10/31/97	100-200-2000	113.28	OCT 97, TAX DISBURSEMENTS, TAX A/C
CITY OF GRANGER	252546	10/31/97	100-200-2000	1,740.19	OCT 97, TAX DISBURSEMENTS, TAX A/C
HUTTO I.S.D.	252547	10/31/97	100-200-2000	8,192.38	OCT 97, TAX DISBURSEMENTS, TAX A/C
CEO	252548	10/31/97	100-200-2000	810.40	OCT 97, TAX DISBURSEMENTS, TAX A/C
COUPLAND ISD	252549	10/31/97	100-200-2000	1,886.53	OCT 97, TAX DISBURSEMENTS, TAX A/C
MCCREARY, VESELKA, BRAGG	252551	10/31/97	100-200-3000	12,429.39	OCT 97, TAX DISBURSEMENTS, TAX A/C
HEARD, GOGGAN, BLAIR & WILLIAM	252552	10/31/97	100-200-3000	4,717.14	OCT 97, TAX DISBURSEMENTS, TAX A/C
TEXAS ALCOHOL BEVERAGE COMMISS	252554	10/31/97	100-200-4000	4,075.25	OCT 97, TAX DISBURSEMENTS, TAX A/C
Total 208				\$ 48,987.99	
341					
TRAVIS CO SHERIFF'S DEPT	252777	11/12/97	100-341-7000	\$ 80.00	CA#97-126-T277, SHF FEE, SOT COW VS JENNIE L
HEARD, GOGGAN, BLAIR & WILLIAM	252778	11/17/97	100-341-7000	75.00	CA#85-011-T, SHF FEE, WMSON CO VS CHARLES AN
TRAVIS CO SHERIFF'S DEPT	252779	11/17/97	100-341-7000	40.00	CA#97-378-T26, SHF FEE, GISD JAMES P BALDWIN
Total 341				\$ 195.00	
351					
dba MUNICIPAL SERVICES BUREAU	252816	10/31/97	100-351-3001	\$ 157.50	INV 10-011435, COLLECTIONS, JP#1
GEORGE CROCKER	252772	11/14/97	100-351-3002	3.00	NOV 14, OVERPMT OF CA#CR-952303, JP#2
Total 351				\$ 160.50	
400-CO JUDGE					
EAGLE OFFICE PRODUCTS	252646	11/12/97	100-400-3100	\$ 75.64	INV 51221, PO 35467, OFFICE SUPPLIES, C/JUDGE
HERITAGE PRINTING	252648	11/12/97	100-400-3100	44.00	INV 14377, PO 35204, OFFICE SUPPLIES, C/JUDGE
REFERENCE TECHNOLOGY	252664	11/07/97	100-400-4210	10.00	INV WCM-0120, WEB SITE MAINT, C/JUDGE
HILL COUNTRY NEWS	252641	11/18/97	100-400-4999	24.00	DEC 97-98, SUBSCRIPTION RENEWAL, C/JUDGE
Total 400-CO JUDGE				\$ 154.52	
401-COMRS COURT					
OFFICE FURNITURE DISTRIBUTORS	252901	10/28/97	100-401-3100	\$ 142.35	INV 323005-0, PO 35249, 1500 WT HEATER, OPER
Total 401-COMRS COURT				\$ 142.35	
403-CO CLERK					
RAPID CHARGE INC.	252822	11/12/97	100-403-3100	\$ 420.00	INV 2303, PO 35054, TONER CARTRIDGES, C/CLK
IACREOT	252401	11/25/97	100-403-3900	110.00	PO 35736, MEMBERSHIP IACREOT, E.BIZZELL, C/C
ELAINE BIZZELL	252869	11/18/97	100-403-4231	39.22	OCT 1-31, EXP REIMB, C/CLERK
CANON U.S.A., INC.	252783	11/06/97	100-403-4500	167.66	INV LR337232, PO 31302, AUG 97, C/CLK
dba SIERRA SPRING WATER COMPAN	252819	11/03/97	100-403-4999	49.70	INV 070938, A#219667, WATER, C/CLK
Total 403-CO CLERK				\$ 786.58	

VOL 0094 PAGE 125

Vendor.....	Invoice Id	Inv Date	Account Number	Expense Amount	Description.....
<b>405-VETERANS SERVICE</b>					
SOUTHWESTERN BELL	252912	11/07/97	100-405-4211	\$ 199.79	NOV 97, 365-8636, VET SERV
RICHARD PFEIL	252722	11/25/97	100-405-4610	131.25	RENT-113 W 4TH, TAYLOR, TAX A/C, VET; D/L; 7
Total 405-VETERANS SERVICE				\$ 331.04	
<b>409-NON DEPT</b>					
HENSLEY & KING, P.C.	252649	10/24/97	100-409-4100	\$ 281.25	INV 10999, PROFESSIONAL SERVICES, RE:CHG CNT
COLBERT AND ASSOCIATES	252730	11/25/97	100-409-4100	500.00	MONTHLY RETAINER - PROFESSIONAL SERVICES, MO
REFERENCE TECHNOLOGY	252665	11/07/97	100-409-4210	350.00	INV WCO-001, WEB SITE OPERATION
REFERENCE TECHNOLOGY	252667	11/07/97	100-409-4210	110.00	INV WCM-012A, WEB SITE MAINT, COMM COURT
GTE SOUTHWEST	252903	11/04/97	100-409-4211	17.01	NOV 97, 930-3261, ELEVATOR
SOUTHWESTERN BELL	252904	11/01/97	100-409-4211	406.04	NOV 97, 259-2090, OPERATOR
WES POARCH	252709	11/25/97	100-409-4964	400.00	CONTRACT FEES FOR SHOWBARN CARETAKER, 12/1/9
CORA L. HILLIARD	252651	11/07/97	100-409-4993	3,589.94	NOV 7, MEETING PLANNING & FACILITATION
DORSETT ELECTRICAL SERVICE	252642	11/18/97	100-409-5300	331.92	INV 042154, ELECTRICAL REPAIRS AT SHOWBARN
DORSETT ELECTRICAL SERVICE	252644	11/18/97	100-409-5300	4,860.00	INV 042153, PARKING/SECURITY LIGHTING AT SHO
MCINTIRE'S GARDEN CENTER	252654	11/06/97	100-409-5300	601.45	INV 001949, PG 35426, REPAIR SPRINKLER, SHOW
SHARON BLAYNEY	252849	10/28/97	100-409-5300	19.71	OCT 11, EXP REIMB, SHOWBARN
ROMULO LOZANO, JR.	252712	11/25/97	100-409-5725	50.00	RENT, RADIO TOWER
Total 409-NON DEPT				\$ 11,517.32	
<b>426-CO CT AT LAW #1</b>					
BETSY F. LAMBETH	252329	11/13/97	100-426-4130	\$ 50.00	CA#97-1502-FC1, D.D.W., CC#1
BROWN, MCCARROLL, SHEETS	252333	11/07/97	100-426-4130	150.00	CA#96-1081-FC1, C.B., CC#1
C. RANDY LEPLEY, P.C.	252336	11/13/97	100-426-4130	150.00	CA#96-4902-1, DANIEL J. CRUZ, CC#1
CHERIE A. BALLARD	252339	11/13/97	100-426-4130	180.00	CA#97-1421-FC1, J.A. & T.L., CC#1
ELISA E. UGARTE	252341	11/13/97	100-426-4130	250.00	CA#2122, M.M., CC#1
JEFF DEAN CASE	252350	11/17/97	100-426-4130	348.00	CA#2213, J.D., CC#2
JOHN B. MCMASTER	252355	11/13/97	100-426-4130	150.00	CA#97-0928-1, YOLANDA D. WILLIAMS, CC#1
KELLY D. MCCLENNAM, P.C.	252357	11/13/97	100-426-4130	1,535.00	CA#95-1498-FC1, N.WILLIAMS, CC#1
LACEY A. MULLOWNEY	252358	11/17/97	100-426-4130	150.00	CA#97-1379-1, TERRY LYNN BOLT, CC#1
MICHAEL B. WALKER	252360	11/13/97	100-426-4130	150.00	CA#96-3155-1/97-1311-1, KENT WILSON KADE, CC
PATRICIA J. CUMMINGS, P.C.	252361	11/06/97	100-426-4130	150.00	CA#97-2532-1, NANCY GOLDBERG, CC#1
LDDS WORLD COM	252948	10/29/97	100-426-4211	6.91	OCT 97, A#679173, CC#1
Total 426-CO CT AT LAW #1				\$ 3,269.91	
<b>427-CO CT AT LAW #2</b>					
ELISA E. UGARTE	252340	11/12/97	100-427-4130	\$ 175.00	CA#97-4276-2M ALFONSO HERRERA, CC#2
JEFF DEAN CASE	252348	11/05/97	100-427-4130	200.00	CA#95-1001-FC2, B.D./K.D./B.C.D./R.C.D./&B.E
JEFF DEAN CASE	252349	11/06/97	100-427-4130	200.00	CA#92-1454-FC2, R.M., CC#2
CHAPMAN CRT RPTNG SERVICE	252706	11/04/97	100-427-4135	150.00	INV 97-5620, OCT 31 FULL DAY REPORTING, CC#2
Total 427-CO CT AT LAW #2				\$ 725.00	
<b>435-DIST COURTS</b>					
BONNIE WOLBRUECK, DIST. CLERK	252896	11/25/97	100-435-4002	\$ 1,602.00	NOV 25, REPLENISH JUROR FUND, D/CLK
KIM LEE, CSR	252820	11/10/97	100-435-4125	2,100.60	INV 97-1002, 11/5-7/96 & 12/19/96, COURT RPT
TERESA HALL	252827	11/17/97	100-435-4125	4,302.00	NOV 17, CA#96-119-K368, RAUL Z. ROBLEDG, RPT

VOL 0094 PAGE 126

Vendor.....	Invoice Id	Inv Date	Account Number	Expense Amount	Description.....
CARRIE C. TOWNSEND	252785	11/12/97	100-435-4135	520.00	INV 40, NOV 3-6, FULL DAYS COURT REPORTING,
YOLANDA S. ROBINSON	252327	11/12/97	100-435-4141	25.00	CA#91-236-K26, INTERPRETER, 26TH DIST CT
YOLANDA S. ROBINSON	252774	11/13/97	100-435-4141	82.40	NOV 13, CA#95-285-K26, INTERPRETING, 26TH DI
YOLANDA S. ROBINSON	252775	11/10/97	100-435-4141	152.40	NOV 10, CA#97-650-K277, INTERPRETING, 277TH
LDDS WORLDCOM	252951	08/29/97	100-435-4211	0.11	AUG 97, A#1922571, CO SEC
LDDS WORLDCOMM	252952	08/29/97	100-435-4211	3.91	AUG 97, A#700763, UNASSIGNED CT
LDDS WORLDCOMM	252953	10/29/97	100-435-4211	1.00	OCT 97, A#700763, UNASSIGNED CT
DOMINO'S PIZZA	252804	11/07/97	100-435-4933	48.55	INV 3837, FOOD FOR JURORS, 368TH DIST CT
DOMINO'S PIZZA	252805	11/06/97	100-435-4933	65.50	INV 3835, FOOD FOR JURORS, 26TH DIST CT

Total 435-DIST COURTS

\$ 8,903.47

## 436-26TH JUD DIST CT

C. RANDY LEPLY, P.C.	252334	11/12/97	100-436-4130	\$ 350.00	CA#97-206-K26, BOBBY HENDERSON, 26TH DIST CT
CARLOS H. BARRERA	252338	11/12/97	100-436-4130	350.00	CA#92-129-K26, ARTURO RESENDEZ, 26TH DIST CT
JOHN R. DUER	252354	11/12/97	100-436-4130	350.00	CA#91-236-K26, GUADALUPE CASAS, 26TH DIST CT
PETER L. BLOODWORTH	252363	11/12/97	100-436-4130	350.00	CA#97-806-K26, GLEN DILWORTH, 26TH DIST CT
TED M. HEJL	252370	11/10/97	100-436-4130	200.00	CA#92-237-F26, WASHINGTON CHILDREN, 26TH DIS
TERESA DUFFIN	252371	11/12/97	100-436-4130	600.00	CA#97-207-K26, CARLOS MARTINEZ, 26TH DIST CT
TERESA DUFFIN	252372	11/12/97	100-436-4130	350.00	CA#95-172-K26, VICTOR FRANK CENTENO, 26TH DI
M. THOMAS EASTES, P.C.	252373	11/12/97	100-436-4130	350.00	CA#94-203-K26, JOHN DAVID ALLEY, 26TH DIST C

Total 436-26TH JUD DIST CT

\$ 2,900.00

## 437-277TH JUD DIST CT

HERITAGE PRINTING	252818	11/13/97	100-437-3100	\$ 134.23	INV 36923, PO 35593, CASE RESET FORM, 277TH
BRENDA RHEA	252330	11/05/97	100-437-4130	1,597.40	CA#96-727-K277, JONATHAN MILLER, 277TH DIST
BROWN, MCCARROLL, SHEETS	252332	11/14/97	100-437-4130	350.00	CA#96-667-K277, ROBERT LEE MATHIS, 277TH DIS
C. RANDY LEPLY, P.C.	252335	11/05/97	100-437-4130	350.00	CA#96-638-K277, RICHARD SANCHEZ, 277TH DIST
CARLOS H. BARRERA	252337	11/07/97	100-437-4130	100.00	CA#97-678-K277, TONY DON LOVE, 277TH DIST CT
EVA EAKIN, ATTORNEY AT LAW	252343	11/05/97	100-437-4130	350.00	CA#93-392-K277, JASON IVAN JACO, 277TH DIST
JEFF DEAN CASE	252347	11/05/97	100-437-4130	481.64	CA#97-1167-F277, I.I.O., 277TH DIST CT
JOHN R. DUER	252351	11/14/97	100-437-4130	350.00	CA#97-641-K277, FRANCISCO RENOVATO, 277TH DI
JOHN R. DUER	252352	11/14/97	100-437-4130	350.00	CA#97-563-K277, STACEY MOORE, 277TH DIST CT
JOHN R. DUER	252353	11/14/97	100-437-4130	350.00	CA#95-510-K277, ANTHONY ORTEGA, 277TH DIST C
JOHN W. STICKLES	252356	09/15/97	100-437-4130	350.00	CA#93-072-K277, DUSTIN ALLEN MUSGROVE, 277TH
MICHAEL B. WALKER	252359	11/14/97	100-437-4130	250.00	CA#96-156-K277, SALVADOR SANDOVAL, 277TH DIS-
RAYMOND M. ESPERSEN	252364	11/14/97	100-437-4130	350.00	CA#97-566-K277, JOSE GUADALUPE PARAMO, 277TH
ROBB SHEPHERD	252365	11/14/97	100-437-4130	150.00	CA#97-756-K277, KIMBERLY MARTINETS, 277TH DI
ROBB SHEPHERD	252366	11/07/97	100-437-4130	350.00	CA#97-591-K277, RAFAEL BUSTAMANTE, 277TH DIS
RICHARD SEGURA, JR.	252367	11/14/97	100-437-4130	350.00	CA#95-033-K277, ELIAS PERALEZ MALDONADO, 277
SCOTT TATUM	252368	11/05/97	100-437-4130	350.00	CA#94-558-K277, ROBERTO REYES, 277TH DIST CT
STEVEN C. COPENHAVER	252369	10/27/97	100-437-4130	350.00	CA#97-677-K277, JOSEPH CARLTON WHITE, 277TH
WALSH, AKINS & DAVIS, PC	252374	11/17/97	100-437-4130	125.00	CA#96-373-F277, CARLOS VELEZ JR, 277TH DIST
MARJORIE M. HERBERT	252375	11/17/97	100-437-4130	100.00	CA#96-1117-F277, SARAH KAY NEWTH, 277TH DIST
LDDS WORLDCOM	252949	10/29/97	100-437-4211	18.13	OCT 97, A#679169, 277TH DIST CT

Total 437-277TH JUD DIST CT

\$ 7,156.40

## 438-368TH JUD DIST CT

OFFICE FURNITURE DISTRIBUTORS	252655	10/28/97	100-438-3100	\$ 61.66	INV 322996-0, PO 35223, OFFICE SUPPLIES, 368
OFFICE FURNITURE DISTRIBUTORS	252658	10/28/97	100-438-3100	38.77	INV 323000-0, PO 35222, OFFICE SUPPLIES, 368

VOL 0094 PAGE 127

Vendor.....	Invoice Id	Inv Date	Account Number	Expense Amount	Description.....
ALEX CALHOUN	252328	11/13/97	100-438-4130	350.00	CA#97-477-K368, DWIGHT N CHILCOTE, 368TH DIS
ENOCHS & PICK, L.L.P.	252342	11/06/97	100-438-4130	350.00	CA#97-134-J368, G.V., 368TH DIST CT
J. RANDALL GRIMES	252344	10/27/97	100-438-4130	350.00	CA#86-547-F, P.M., 368TH DIST CT
JACK M. WEBERNICK	252345	11/14/97	100-438-4130	1,500.00	CA#97-517-K368, TOMMY CHENTHAM, 368TH DIST C
PATRICIA J. CUMMINGS, P.C.	252362	11/06/97	100-438-4130	350.00	CA#96-537-K368, PRISCILLA LUCERO, 368TH DIST

Total 438-368TH JUD DIST CT

\$ 3,000.43

## 440-DIST ATTY

GLENDIA CLARK	252855	11/14/97	100-440-4232	\$ 48.36	NOV 3-5, EXP REIMB, D/ATTY
CARRIE C. TOWNSEND	252704	11/12/97	100-440-4932	130.00	INV 39, NOV 12, 2-HALF DAY COURT REPORTING,
LA QUINTA-GEORGETOWN	252815	11/08/97	100-440-4932	858.80	INV 0926B303, NOV 1-7, STEVE STONE, D/ATTY
TDCAA	252826	11/10/97	100-440-4932	179.75	INV 000350, PO 35497, CHARGINGMANUAL-BINDERS
HEB GROCERY STORE #237	252834	10/08/97	100-440-4932	12.60	INV 00620204, A#10027570001, LAB PHOTO, D/AT
HEB GROCERY STORE #237	252835	11/03/97	100-440-4932	6.07	INV 00650823, A#10027570001, LAB PHOTO, D/AT
HEB GROCERY STORE #237	252836	10/10/97	100-440-4932	7.91	INV 00620207, A#10027570002, LAB PHOTO, D/AT
HEB GROCERY STORE #237	252837	10/30/97	100-440-4932	7.45	INV 00620244, A#10027570001, LAB PHOTO, D/AT
HEB GROCERY STORE #237	252838	10/17/97	100-440-4932	19.90	INV 00620221, A#10027570002, LAB PHOTO, D/AT
TEXAS DIST & CO	252830	11/14/97	100-440-4999	35.00	DEC 97-98, MEMBERSHIP DUES, WILLIAM W. TORRE

Total 440-DIST ATTY

\$ 1,305.84

## 450-DIST CLERK

BERRY HARDWARE CO	252650	11/10/97	100-450-3100	\$ 10.79	INV 2126532, PO 35279, PADLOCK, D/CLK
REFERENCE TECHNOLOGY	252652	11/07/97	100-450-4210	40.00	INV MCW-012G, OCT 97, WEB SITE MAINT, D/CLK

Total 450-DIST CLERK

\$ 50.79

## 451-JP PCT #1

EAGLE OFFICE PRODUCTS	252806	11/14/97	100-451-3100	\$ 132.76	INV 51241, PO 35500, SCALE/TNR CRTG/ENVEL, J
D & L PRINTING	252790	11/04/97	100-451-3115	585.57	INV 1191, PO 35092, 3-PART FORMS, JP#1
TRAVIS COUNTY MEDICAL EXAMINER	252801	11/06/97	100-451-4190	800.00	INV 97-631, WILLIAM R. KNICKERBOCKER, AUTOPS
TRAVIS COUNTY MEDICAL EXAMINER	252802	11/06/97	100-451-4190	800.00	INV 97-636, LILLIAN EDWARDS, AUTOPSY, JP#1
TRAVIS COUNTY MEDICAL EXAMINER	252803	10/29/97	100-451-4190	800.00	INV 97-653, PATSY SHIPWASH, AUTOPSY, JP#1
BONNIE SIMS	252845	11/17/97	100-451-4232	337.03	OCT 30-NOV 12, EXP REIMB, JP#1
D & L PRINTING	252788	11/04/97	100-451-4350	118.07	INV 1205, PO 35234, LETTERHEAD, JP#1
D & L PRINTING	252793	11/11/97	100-451-4350	165.00	INV 1204, PO 35234, CRIM CS JCKTS/ENVELOPES,
GOULD PUBLICATIONS	252808	11/06/97	100-451-4350	205.60	INV 18956, PO 35300, PUBLICATIONS, JP#1
JURIS PUBLISHING, INC.	252814	11/05/97	100-451-4350	240.50	INV 946558, PO 35296, PUBLICATIONS, JP#1
OMNI PUBLISHERS, INC.	252817	11/05/97	100-451-4350	114.50	INV 971105-05, PO 35298, PUBLICATIONS, JP#1
TEXAS ALCOHOL BEVERAGE COMMISS	252829	11/06/97	100-451-4350	21.48	NOV 6, CODE BOOKS, JP#1

Total 451-JP PCT #1

\$ 4,320.51

## 452-JP PCT #2

BRYAN M. NORMAN	252745	10/29/97	100-452-4002	\$ 6.00	OCT 97, JUROR FEE, JP#2
SUSAN K. MORENO	252747	10/29/97	100-452-4002	6.00	OCT 29, JUROR FEE, JP#2
PATRICIA TODD	252749	10/29/97	100-452-4002	6.00	OCT 29, JUROR FEE, JP#2
DANA S. BROWN	252751	10/29/97	100-452-4002	6.00	OCT 29, JUROR FEE, JP#2
THOMAS R. TURNER	252753	10/29/97	100-452-4002	6.00	OCT 29, JUROR FEE, JP#2
LAVERNE CALDWELL	252754	10/29/97	100-452-4002	6.00	OCT 29, JUROR FEE, JP#2
JOHN SANCHEZ	252756	10/29/97	100-452-4002	6.00	OCT 29, JUROR FEE, JP#2

VOL 0094 PAGE 128

Vendor.....	Invoice Id	Inv Date	Account Number	Expense Amount	Description.....
KAREN D. BRZOWSKI	252758	10/29/97	100-452-4002	6.00	OCT 29, JUROR FEE, JP#2
LEONARD J. ROBERTS	252759	10/29/97	100-452-4002	6.00	OCT 29, JUROR FEE, JP2
VICKIE LOU ACOSTA	252760	10/29/97	100-452-4002	6.00	OCT 29, JUROR FEE, JP#2
RUBY S. THAMES	252762	10/29/97	100-452-4002	6.00	OCT 29, JUROR FEE, JP#2
JEFFREY W. METZ	252763	10/29/97	100-452-4002	6.00	OCT 29, JUROR FEE, JP#2
STEPHEN R. COOPER	252764	10/29/97	100-452-4002	6.00	OCT 29, JUROR FEE, JP#2
WILLIAM LOWRIMORE	252766	10/29/97	100-452-4002	6.00	OCT 29, JUROR FEE, JP#2
JAMES W. MYERS	252767	10/29/97	100-452-4002	6.00	OCT 29, JUROR FEE, JP#2
MARY E. VASQUES	252768	10/29/97	100-452-4002	6.00	OCT 29, JUROR FEE, JP#2
OLEN G. FIELDS	252770	10/29/97	100-452-4002	6.00	OCT 29, JUROR FEE, JP#2
MARY ANN DEAN	252771	10/29/97	100-452-4002	6.00	OCT 29, JUROR FEE, JP#2
GTE MOBILNET INCORPORATED	252931	11/07/97	100-452-4211	29.41	NOV 97, 496-4407, JP#2
LYNDA PETTIT	252861	11/14/97	100-452-4231	49.60	OCT 27-NOV 14, EXP REIMB, JP#2
CITY OF CEDAR PARK	252735	11/25/97	100-452-4610	721.00	RENT FOR JP#2, CONST#2, HEALTH DEPT.
Total 452-JP PCT #2				\$	908.01
453-JP PCT #3					
TRAVIS COUNTY MEDICAL EXAMINER	252800	11/13/97	100-453-4190	\$	900.00 INV 97-682, EUGENE E. LAIDOLF, AUTOPSY, JP#3
THE GABRIELS FUNERAL CHAPEL	252831	11/13/97	100-453-4190	95.00	NOV 13, JOSHUA A. SAHAGUN, TRANSPORTATION, J
MONICA ABBOTT	252852	11/17/97	100-453-4232	42.28	OCT 31, EXP REIMB, JP#3
MELISSA GOINS	252853	11/07/97	100-453-4232	11.10	OCT 31, EXP REIMB, JP#3
ELIZABETH GOODRICH	252870	11/06/97	100-453-4232	13.15	OCT 31, EXP REIMB, JP#3
WEST PBLSHNG CO	252776	10/22/97	100-453-4350	19.60	INV 00045078, A#235-553-364, TX FAM CD 98PAM
Total 453-JP PCT #3				\$	1,081.13
454-JP PCT #4					
SOUTHWESTERN BELL	252906	11/07/97	100-454-4211	\$	99.79 NOV 97, 365-8922, JP#4
LDOS WORLDCOM	252944	10/29/97	100-454-4211	9.36	OCT 97, A#0770002230, JP#4
TAYLOR DAILY PRESS	252403	11/19/97	100-454-4350	70.00	PO 35686, 1 YR SUBSCRIPTION, DEC97-98, JP#4
TUELECTRIC	252895	11/13/97	100-454-4430	327.25	NOV 97, A#422-0780-97-9, JP#4
RICK'S JANITORIAL SERVICE	252717	11/25/97	100-454-4962	140.00	JANITORIAL SERVICE - JP#4 - AWARDED BID 10/1
Total 454-JP PCT #4				\$	646.40
475-CO ATTY					
ROBERTS PRINTING CO., INC	252659	10/08/97	100-475-3100	\$	10.71 INV 2090, 1000VALOREM 20#, C/ATTY
TEXAS DIST & CO	252584	11/01/97	100-475-3900	25.00	NOV 97-98, MEMBERSHIP DUES, DIANA SMITH, C/A
JOE SAEGERT INSURANCE AGENCY	252595	11/10/97	100-475-3900	401.00	INV 8845, OCT 97-98, EMPLOYEE HONESTY BOND #
GTE MOBILNET INCORPORATED	252916	11/10/97	100-475-4211	7.51	NOV 97, 496-7318, C/ATTY
GTE MOBILNET INCORPORATED	252925	11/13/97	100-475-4211	23.74	NOV 97, 496-7319, C/ATTY
GTE MOBILNET INCORPORATED	252927	11/01/97	100-475-4211	50.25	NOV 97, 496-7315, C/ATTY
GTE MOBILNET INCORPORATED	252929	10/25/97	100-475-4211	3.95	OCT 97, 217-4223, C/ATTY
GTE MOBILNET INCORPORATED	252930	11/04/97	100-475-4211	7.76	NOV 97, 496-7316, C/ATTY
GTE MOBILNET INCORPORATED	252932	11/01/97	100-475-4211	3.95	NOV 97, 217-4225, C/ATTY
LDOS WORLDCOM	252954	10/29/97	100-475-4211	66.49	OCT 97, A#679157, C/ATTY
PEGGY VASQUEZ	252863	11/14/97	100-475-4231	69.44	NOV 2-5, EXP REIMB, C/ATTY
DANA COLE	252860	11/13/97	100-475-4232	17.36	NOV 4, EXP REIMB, C/ATTY
WEST PBLSHNG CO	252506	10/30/97	100-475-4350	76.00	INV 88949, TX FAMILY CODE, C/ATTY
WEST PBLSHNG CO	252587	11/05/97	100-475-4350	176.84	INV 88955, TX FAMILY CODE ANNO, C/ATTY
WEST PBLSHNG CO	252589	10/08/97	100-475-4350	81.00	INV 99431197, A#858-364-150, TX CASES 10/97

VOL 0094 PAGE 129

Vendor.....	Invoice Id	Inv Date	Account Number	Expense Amount	Description.....
WEST PBLSHNG CO	252592	10/08/97	100-475-4350	31.00	INV 99445637, AN858-364-150, TX STAT & CODE,
WEST PBLSHNG CO	252593	10/22/97	100-475-4350	231.40	INV 00049176, AN858-364-150, TX FAM CD 98PAM
DANKA INDUSTRIES, INC.	252639	11/09/97	100-475-4500	15.73	INV 1457149 LESS CM 050604, OCT 97 METER REA
BROWN, MCCARROLL, SHEETS	252556	10/31/97	100-475-4932	481.52	OCT 97, PROFESSIONAL SERVICES, SPECIAL PROSE
TERESA HALL	252660	11/03/97	100-475-4932	104.60	INV 97-095-K368, OCT 23, MARK SHAW, 368TH DI

Total 475-CO ATTY

\$ 1,885.25

## 492-ELECTIONS

JOHANNA DOBERNECKI	252960	11/04/97	100-492-1150	\$ 79.50	NOV 97 ELECTIONS
TED WEAVER	252961	11/04/97	100-492-1150	18.00	NOV 97 ELECTIONS
TRAVIS SWENSON	252962	11/02/97	100-492-1150	24.00	NOV 97 ELECTIONS
JONAH SCHROWANG	252963	11/02/97	100-492-1150	42.00	NOV 97 ELECTIONS
JESSE SCHROWANG	252964	11/02/97	100-492-1150	42.00	NOV 97 ELECTIONS
LILA O. PECHT	252965	11/04/97	100-492-1150	15.00	NOV 97 ELECTIONS
REGIS J. STUBLAR	252966	11/04/97	100-492-1150	108.50	NOV 97 ELECTIONS
JUDI LEWIS	252967	11/04/97	100-492-1150	112.00	NOV 97 ELECTIONS
RANDY E. LEWIS	252968	11/04/97	100-492-1150	4.50	NOV 97 ELECTIONS
JANET POOL	252969	11/04/97	100-492-1150	112.00	NOV 97 ELECTIONS
SPENCER MERKORD	252970	11/04/97	100-492-1150	24.00	NOV 97 ELECTIONS
BRANDON C. WALTHER	252971	11/04/97	100-492-1150	24.00	NOV 97 ELECTIONS
CRAIG W. ANDREWS	252972	11/04/97	100-492-1150	40.50	NOV 97 ELECTIONS
PHIL NOACK	252973	11/04/97	100-492-1150	51.00	NOV 97 ELECTIONS
LUSELLA JONES	252974	11/04/97	100-492-1150	18.00	NOV 97 ELECTIONS
DONALD E. JONES	252975	11/04/97	100-492-1150	18.00	NOV 97 ELECTIONS
CLAUDIA SYDNEY	252976	11/04/97	100-492-1150	15.00	NOV 97 ELECTIONS
BEAN B. BELL	252977	11/04/97	100-492-1150	21.00	NOV 97 ELECTIONS
SHAD AHMED	252978	11/04/97	100-492-1150	18.00	NOV 97 ELECTIONS
OTIS COUFAL	252979	11/04/97	100-492-1150	50.00	NOV 97 ELECTIONS
HOLLY BIGAN	252980	11/04/97	100-492-1150	50.00	NOV 97 ELECTIONS
NATHAN COPDEVILLE	252981	11/04/97	100-492-1150	48.00	NOV 97 ELECTIONS
ESTHER RENDON	252982	11/04/97	100-492-1150	18.00	NOV 97 ELECTIONS
ROBERT CHAVEZ	252983	11/04/97	100-492-1150	18.00	NOV 97 ELECTIONS
BETTY JO PATTERSON	252984	11/04/97	100-492-1150	21.00	NOV 97 ELECTIONS
JEREMY HOBRATSCH	252985	11/04/97	100-492-1150	45.00	NOV 97 ELECTIONS
CARRIE ALLISON	252986	11/04/97	100-492-1150	18.00	NOV 97 ELECTIONS
THURMAN B. ALLISON	252987	11/04/97	100-492-1150	18.00	NOV 97 ELECTIONS
SHIRLEY MERKORD	252988	11/04/97	100-492-1150	50.00	NOV 97 ELECTIONS
LYNDSEY PAINTER	252989	11/04/97	100-492-1150	21.00	NOV 97 ELECTIONS
SHAYLENA FULTON	252990	11/04/97	100-492-1150	16.50	NOV 97 ELECTIONS
JOSH TASIN	252991	11/04/97	100-492-1150	21.00	NOV 97 ELECTIONS
MANUEL VICTOR GONZALEZ	252992	11/04/97	100-492-1150	21.00	NOV 97 ELECTIONS
NORMA D. HARRIS	252993	11/04/97	100-492-1150	37.50	NOV 97 ELECTIONS
MILISSA HURTADO	252994	11/04/97	100-492-1150	50.00	NOV 97 ELECTIONS
TERESA MASKUNAS	252996	11/04/97	100-492-1150	24.00	NOV 97 ELECTIONS
CURTIS LARGENT	252997	11/04/97	100-492-1150	18.00	NOV 97 ELECTIONS
MARY LARGENT	252998	11/04/97	100-492-1150	18.00	NOV 97 ELECTIONS
SETH A. KILLINGBECK	252999	11/04/97	100-492-1150	18.00	NOV 97 ELECTIONS
LESLY KIRKPATRICK	253000	11/04/97	100-492-1150	19.50	NOV 97 ELECTIONS
JOHNNIE A. PECHT	253001	11/04/97	100-492-1150	15.00	NOV 97 ELECTIONS
VICKI MYERS	253002	11/04/97	100-492-1150	15.00	NOV 97 ELECTIONS
SHELIA KRUEGER	253003	11/04/97	100-492-1150	103.00	NOV 97 ELECTIONS

VOL 0094 PAGE 130

Vendor.....	Invoice Id	Inv Date	Account Number	Expense Amount	Description.....
JEAN DILLARD	253004	11/04/97	100-492-1150	73.50	NOV 97 ELECTIONS
HELEN BOHMFALK	253005	11/04/97	100-492-1150	66.00	NOV 97 ELECTIONS
YOLANDA C. WALDEN	253006	11/04/97	100-492-1150	51.00	NOV 97 ELECTIONS
JOANN DAVIS	253007	11/04/97	100-492-1150	21.00	NOV 97 ELECTIONS
THERESA HARPER	253008	11/04/97	100-492-1150	57.00	NOV 97 ELECTIONS
JOHN DAVIS	253009	11/04/97	100-492-1150	112.00	NOV 97 ELECTIONS
DAVID HARPER	253010	11/04/97	100-492-1150	87.00	NOV 97 ELECTIONS
CARLTON W. HORNBECK	253011	11/04/97	100-492-1150	78.00	NOV 97 ELECTIONS
EDWIN L. LEBRETON	253012	11/04/97	100-492-1150	109.00	NOV 97 ELECTIONS
APRIL A. LEBRETON	253013	11/04/97	100-492-1150	82.50	NOV 97 ELECTIONS
B. KATHLEEN ULTMANN	253014	11/04/97	100-492-1150	78.00	NOV 97 ELECTIONS
KATHY SMITH	253015	11/04/97	100-492-1150	76.50	NOV 97 ELECTIONS
CAROL FIELDING	253016	11/04/97	100-492-1150	103.00	NOV 97 ELECTIONS
JACKSON W. BOSLEY	253017	11/04/97	100-492-1150	101.50	NOV 97 ELECTIONS
SANDRA S. BOSLEY	253018	11/04/97	100-492-1150	76.50	NOV 97 ELECTIONS
NANCI SHIVELY	253019	11/04/97	100-492-1150	76.50	NOV 97 ELECTIONS
JAMES P. MCNAIR, JR.	253020	11/04/97	100-492-1150	109.00	NOV 97 ELECTIONS
GEORGE WOOLEY	253021	11/04/97	100-492-1150	78.00	NOV 97 ELECTIONS
BETTY E. CARLTON	253022	11/04/97	100-492-1150	48.00	NOV 97 ELECTIONS
MARY SUTTON	253023	11/04/97	100-492-1150	79.50	NOV 97 ELECTIONS
ROSE M. PATE	253024	11/04/97	100-492-1150	79.50	NOV 97 ELECTIONS
JOSEPH MESOLOWSKI	253025	11/04/97	100-492-1150	109.00	NOV 97 ELECTIONS
ELSIE ZIMMERHANZEL	253026	11/04/97	100-492-1150	78.00	NOV 97 ELECTIONS
BILLYE JEAN MESOLOWSKI	253027	11/04/97	100-492-1150	84.00	NOV 97 ELECTIONS
LINDA NEELEY	253028	11/04/97	100-492-1150	109.00	NOV 97 ELECTIONS
FRANKIE BEAUCHAMP	253029	11/04/97	100-492-1150	84.00	NOV 97 ELECTIONS
JAMES BEAUCHAMP	253030	11/04/97	100-492-1150	84.00	NOV 97 ELECTIONS
JOHN B. GORDON	253031	11/04/97	100-492-1150	69.00	NOV 97 ELECTIONS
JASON GORDON	253032	11/04/97	100-492-1150	75.00	NOV 97 ELECTIONS
CHRIS HALEY	253033	11/04/97	100-492-1150	39.00	NOV 97 ELECTIONS
RUTH GORDON	253034	11/04/97	100-492-1150	40.00	NOV 97 ELECTIONS
JOHN F. THOMAS	253035	11/04/97	100-492-1150	109.00	NOV 97 ELECTIONS
BEATRICE SHERRY	253036	11/04/97	100-492-1150	76.50	NOV 97 ELECTIONS
JOSEPHINE UPDEGRAFF	253037	11/04/97	100-492-1150	76.50	NOV 97 ELECTIONS
S. EVELYN FLOWERS-COOK	253038	11/04/97	100-492-1150	85.00	NOV 97 ELECTIONS
JACQUELYN PICK	253039	11/04/97	100-492-1150	76.50	NOV 97 ELECTIONS
A.W. PICK	253040	11/04/97	100-492-1150	76.50	NOV 97 ELECTIONS
BILL H. SHELBY	253041	11/04/97	100-492-1150	78.00	NOV 97 ELECTIONS
KENNETH A. JONES	253042	11/04/97	100-492-1150	103.00	NOV 97 ELECTIONS
RANDOLPH FOSTER	253043	11/04/97	100-492-1150	78.00	NOV 97 ELECTIONS
VERN M. NUS	253045	11/04/97	100-492-1150	109.00	NOV 97 ELECTIONS
PATRICIA NUS	253046	11/04/97	100-492-1150	84.00	NOV 97 ELECTIONS
TROY JOSEPH	253047	11/04/97	100-492-1150	112.00	NOV 97 ELECTIONS
SHARON K. BROWN	253048	11/04/97	100-492-1150	78.00	NOV 97 ELECTIONS
JANET JENNING	253049	11/04/97	100-492-1150	78.00	NOV 97 ELECTIONS
CHRISTA R. WADE	253050	11/04/97	100-492-1150	104.50	NOV 97 ELECTIONS
GERTRUDE ANDERSON	253051	11/04/97	100-492-1150	78.00	NOV 97 ELECTIONS
OLIVER T. RED	253052	11/04/97	100-492-1150	79.50	NOV 97 ELECTIONS
LEONA FRITZ	253053	11/04/97	100-492-1150	106.00	NOV 97 ELECTIONS
CATHERINE HOLUBEC	253054	11/04/97	100-492-1150	81.00	NOV 97 ELECTIONS
MARY MAGER	253055	11/04/97	100-492-1150	81.00	NOV 97 ELECTIONS
CELESTE RIDGLEY	253056	11/04/97	100-492-1150	75.00	NOV 97 ELECTIONS



VOL 0094 PAGE 131

Vendor.....	Invoice Id	Inv Date	Account Number	Expense Amount	Description.....
BONNIE KADERKA	253057	11/04/97	100-492-1150	109.00	NOV 97 ELECTIONS
VERNELL DVORAK	253058	11/04/97	100-492-1150	103.00	NOV 97 ELECTIONS
HELEN ROZNOVAK	253059	11/04/97	100-492-1150	78.00	NOV 97 ELECTIONS
JANET VITEK	253060	11/04/97	100-492-1150	78.00	NOV 97 ELECTIONS
JAMES D. MORGAN	253061	11/04/97	100-492-1150	106.00	NOV 97 ELECTIONS
RAYMOND M. LITTON	253062	11/04/97	100-492-1150	81.00	NOV 97 ELECTIONS
VIOLA STILES	253063	11/04/97	100-492-1150	46.50	NOV 97 ELECTIONS
ELIZABETH CARLTON	253064	11/04/97	100-492-1150	109.00	NOV 97 ELECTIONS
WILLIAM GARNER	253065	11/04/97	100-492-1150	39.00	NOV 97 ELECTIONS
WILMA GARNER	253066	11/04/97	100-492-1150	39.00	NOV 97 ELECTIONS
EMILY SMITH	253068	11/04/97	100-492-1150	40.50	NOV 97 ELECTIONS
ALVIN G. KOUTS	253069	11/04/97	100-492-1150	42.00	NOV 97 ELECTIONS
VELTA SIMMONS	253070	11/04/97	100-492-1150	107.50	NOV 97 ELECTIONS
BARBARA DAVIS	253071	11/04/97	100-492-1150	76.50	NOV 97 ELECTIONS
DOROTHY FRAZIER	253072	11/04/97	100-492-1150	76.50	NOV 97 ELECTIONS
FLORENCE STILES	253073	11/04/97	100-492-1150	78.00	NOV 97 ELECTIONS
CATHERINE BOBO	253074	11/04/97	100-492-1150	103.00	NOV 97 ELECTIONS
VIRGINIA HARRISON	253075	11/04/97	100-492-1150	78.00	NOV 97 ELECTIONS
ALONZO W. WILLIAMS	253076	11/04/97	100-492-1150	78.00	NOV 97 ELECTIONS
MARTHA J. CAIN	253077	11/04/97	100-492-1150	103.00	NOV 97 ELECTIONS
ADRIENNE WILLIAMS	253078	11/04/97	100-492-1150	78.00	NOV 97 ELECTIONS
RUSS SCHROWANG	253079	11/04/97	100-492-1150	103.00	NOV 97 ELECTIONS
SUE SCHROWANG	253080	11/04/97	100-492-1150	78.00	NOV 97 ELECTIONS
JAN GRIFFIN	253081	11/04/97	100-492-1150	78.00	NOV 97 ELECTIONS
BONNIE GRAHAM	253082	11/04/97	100-492-1150	106.00	NOV 97 ELECTIONS
ARLENE JOHNSON	253083	11/04/97	100-492-1150	75.00	NOV 97 ELECTIONS
ALICE KAUFMAN	253084	11/04/97	100-492-1150	72.00	NOV 97 ELECTIONS
JOANNE WOODS	253085	11/04/97	100-492-1150	112.00	NOV 97 ELECTIONS
DIANE SANSON	253086	11/04/97	100-492-1150	88.50	NOV 97 ELECTIONS
SUSAN BLAKESLEE	253087	11/04/97	100-492-1150	87.00	NOV 97 ELECTIONS
HARRY GIBBS	253088	11/04/97	100-492-1150	70.50	NOV 97 ELECTIONS
SYBIL HAIZER	253089	11/04/97	100-492-1150	78.00	NOV 97 ELECTIONS
DOROTHY E. HANDSEL	253090	11/04/97	100-492-1150	78.00	NOV 97 ELECTIONS
DOROTHY DAVID	253091	11/04/97	100-492-1150	101.50	NOV 97 ELECTIONS
ETHEL BIELSS	253092	11/04/97	100-492-1150	78.00	NOV 97 ELECTIONS
MELVIN WENTRCEK	253093	11/04/97	100-492-1150	76.50	NOV 97 ELECTIONS
NANCY SCOTT	253094	11/04/97	100-492-1150	103.00	NOV 97 ELECTIONS
JAMES H. JONES	253095	11/04/97	100-492-1150	75.00	NOV 97 ELECTIONS
FRANCES ALBERT	253096	11/04/97	100-492-1150	109.00	NOV 97 ELECTIONS
MARGARET GENTRY	253097	11/04/97	100-492-1150	100.00	NOV 97 ELECTIONS
PATRICIA A. GANTT	253098	11/04/97	100-492-1150	75.00	NOV 97 ELECTIONS
HILDA E. OSTLIE	253099	11/04/97	100-492-1150	78.00	NOV 97 ELECTIONS
ELIZABETH S. SHARPE	253100	11/04/97	100-492-1150	76.50	NOV 97 ELECTIONS
DIANE RAISOVICH	253101	11/04/97	100-492-1150	78.00	NOV 97 ELECTIONS
MARGARET CRISLIP	253102	11/04/97	100-492-1150	76.50	NOV 97 ELECTIONS
MERRILL PERSON	253103	11/04/97	100-492-1150	116.50	NOV 97 ELECTIONS
FRED BEVERSDORF	253104	11/04/97	100-492-1150	109.00	NOV 97 ELECTIONS
DAISY BEVERSDORF	253105	11/04/97	100-492-1150	84.00	NOV 97 ELECTIONS
RUTH KIRK	253106	11/04/97	100-492-1150	106.00	NOV 97 ELECTIONS
MARY SAUL	253107	11/04/97	100-492-1150	81.00	NOV 97 ELECTIONS
JIMMY BENNETT	253108	11/04/97	100-492-1150	76.50	NOV 97 ELECTIONS
NEWTON HOLMAN	253109	11/04/97	100-492-1150	76.50	NOV 97 ELECTIONS

VOL 0094 PAGE 132

Vendor.....	Invoice Id	Inv Date	Account Number	Expense Amount	Description.....
JEFF RIPPLE	253110	11/04/97	100-492-1150	106.00	NOV 97 ELECTIONS
LEONA L. KOKEL	253111	11/04/97	100-492-1150	109.00	NOV 97 ELECTIONS
ETHEL NICKAN	253112	11/04/97	100-492-1150	84.00	NOV 97 ELECTIONS
SUE K. PORTER	253114	11/04/97	100-492-1150	87.00	NOV 97 ELECTIONS
BARBARA A. BARRERA	253115	11/04/97	100-492-1150	78.00	NOV 97 ELECTIONS
DOREEN SCHOLTES	253116	11/04/97	100-492-1150	113.50	NOV 97 ELECTIONS
LINDA SEIPPEL	253117	11/04/97	100-492-1150	79.50	NOV 97 ELECTIONS
LORRI HAASE	253118	11/04/97	100-492-1150	39.00	NOV 97 ELECTIONS
MICHAEL J. SCHOLTES	253119	11/04/97	100-492-1150	6.00	NOV 97 ELECTIONS
LISA MATA	253120	11/04/97	100-492-1150	48.00	NOV 97 ELECTIONS
MELANIE BALDON	253121	11/04/97	100-492-1150	66.00	NOV 97 ELECTIONS
DEANA HARRIS	253122	11/04/97	100-492-1150	79.00	NOV 97 ELECTIONS
ANITA M. RAISOVICH	253123	11/04/97	100-492-1150	81.00	NOV 97 ELECTIONS
LORRAINE WHITFIELD	253124	11/04/97	100-492-1150	106.00	NOV 97 ELECTIONS
ALAN ALLOWAY	253125	11/04/97	100-492-1150	75.00	NOV 97 ELECTIONS
CARIN SHAUGHNESSY	253126	11/04/97	100-492-1150	109.00	NOV 97 ELECTIONS
DAVID BEESON	253127	11/04/97	100-492-1150	81.00	NOV 97 ELECTIONS
CHARLES W. NASH	253128	11/04/97	100-492-1150	107.50	NOV 97 ELECTIONS
HARRIS W. SNOWDEN	253129	11/04/97	100-492-1150	81.00	NOV 97 ELECTIONS
MARTHA F. SNOWDEN	253130	11/04/97	100-492-1150	78.00	NOV 97 ELECTIONS
Total 492-ELECTIONS				\$ 11,725.00	
497-CO TREAS					
VIVIAN WOOD	252866	11/12/97	100-497-4232	\$ 135.94	OCT 8-NOV 7, EXP REIMB, TREAS
Total 497-CO TREAS				\$ 135.94	
499-CO TAX ASSR/COLL					
OFFICE FURNITURE DISTRIBUTORS	252653	11/05/97	100-499-3100	\$ 367.18	INV 323668-0, PO 34866, SUGGEST BOX, TAX A/C
OFFICE FURNITURE DISTRIBUTORS	252656	11/05/97	100-499-3100	38.90	INV 323804-0, PO 34866, CASH BOX, TAX A/C
AMS PRINTING	252780	11/14/97	100-499-3100	4.00	INV 17663, ACC#1354, NAME BADGE, TAX A/C
GTE MOBILNET INCORPORATED	252924	11/16/97	100-499-4211	37.53	NOV 97, 497-6280, TAX A/C
PAULETTE KAMRATH	252848	11/12/97	100-499-4231	16.40	OCT 2-30, EXP REIMB, TAX A/C
RICHARD PFEIL	252722	11/25/97	100-499-4610	262.50	RENT-113 W 4TH, TAYLOR, TAX A/C, VET; D/L; ?
Total 499-CO TAX ASSR/COLL				\$ 726.51	
503-INFORMATION SYSTEMS					
COMP USA, INC.	252787	11/06/97	100-503-3115	\$ 259.00	INV 521081013, PO 34734, MODEM, DP
JUMP POINT COMMUNICATIONS	252812	10/30/97	100-503-4210	119.75	INV 971030001, PO 35551, NET SERVICE, DP
JUMP POINT COMMUNICATIONS	252813	09/15/97	100-503-4210	15.00	INV 970915488, PO 35551, INTERNET SERVICE, D
OTIS COUFAL	252846	11/13/97	100-503-4231	61.69	OCT 9-31, EXP REIMB, DP
DENNIS BRABANDT	252847	11/13/97	100-503-4231	40.92	OCT 17-20, EXP REIMB, DP
HEWLETT PACKARD	252810	10/23/97	100-503-4500	7,605.00	INV 68K5W00, PO 35550, MAINT FOR FINANCL & J
Total 503-INFORMATION SYSTEMS				\$ 8,101.36	
509-WMSON CO BLDGS					
B T MILLER OFFICE PRODUCTS	252561	11/18/97	100-509-3110	\$ 2,740.00	INV 43543220, PO 35534, COPY PAPER, MAINT
CINTAS CORPORATION	252621	11/14/97	100-509-3311	71.20	INV 086138132, PO 27850, UNIFORMS, MAIN
CINTAS CORPORATION	252622	11/07/97	100-509-3311	115.20	INV 086136357, PO 27850, UNIFORMS, MAIN

VOL 0094 PAGE 133

Vendor.....	Invoice Id	Inv Date	Account Number	Expense Amount	Description.....
dba CUSTOM QUALITY LAWN CARE	252728	11/25/97	100-509-4810	2,825.00	LAW SERVICE AWARDED BID - 10/1/97 TO 9/30/98
DM CLEANING SERVICE	252719	11/25/97	100-509-4963	17,530.00	JANITORIAL SERVICES AWARDED BID 10/1/97 TO 9
Total 509-WMSON CO BLDGS				\$ 23,281.40	
510-CO CTHOUSE					
ALLSTATE PEST CONTROL, INC.	252559	10/31/97	100-510-3319	\$ 46.00	INV 2270, ACC#90062, MAINT
BERRY HARDWARE CO	252563	11/14/97	100-510-4510	38.96	INV 2126793, PO 35418, WIRE/TAPE, CTHSE
BERRY HARDWARE CO	252566	11/04/97	100-510-4510	11.32	INV 2126175, PO 35418, PVC COUPLINGS, CTHSE
BERRY HARDWARE CO	252569	11/06/97	100-510-4510	17.91	INV 2126303, PO 35418, FORSTNER BIT, CTHSE
BERRY HARDWARE CO	252571	11/10/97	100-510-4510	9.49	INV 2126499, PO 35418, GATE ANTI-SAG KIT, CT
BERRY HARDWARE CO	252599	11/06/97	100-510-4510	21.28	INV 2126305, PO 35418, WALLBOARD ANCHOR/LOCK
BERRY HARDWARE CO	252613	11/18/97	100-510-4510	68.10	INV 2126947, PO 34283, LIGHT SET, MAIN SHOP/
DOVER ELEVATOR CO., INC.	252711	11/25/97	100-510-4510	112.87	MTHLY MAIN JUST CTR, CTHOUSE & JAIL, MAINTEN
Total 510-CO CTHOUSE				\$ 325.93	
511-HISTORICAL SOCIETY					
ALLSTATE PEST CONTROL, INC.	252559	10/31/97	100-511-3319	\$ 20.00	INV 2270, ACC#90062, MAINT
CITY OF GEORGETOWN	252880	10/30/97	100-511-4430	63.72	OCT 97, A#06-0455-01, HIST SOC
Total 511-HISTORICAL SOCIETY				\$ 83.72	
512-HEALTH DEPT 102 W. 3RD					
BERRY HARDWARE CO	252609	11/14/97	100-512-4510	\$ 2.39	INV 2126828, PO 35418, FLUSH LEVER, H/DEPT
FOX SERVICE COMPANY	252623	10/31/97	100-512-4510	736.59	INV 213140, PO 35419, GAS VALVE/RELIT KIT, H
Total 512-HEALTH DEPT 102 W. 3RD				\$ 738.98	
513-TAYLOR OFF BLDG					
TUELECTRIC	252319	11/13/97	100-513-4430	\$ 766.01	NOV 97, A#411-2218-99-7, TAYLOR ANNEX
Total 513-TAYLOR OFF BLDG				\$ 766.01	
515-ROUND ROCK OFF BLDG					
ALLSTATE PEST CONTROL, INC.	252559	10/31/97	100-515-3319	\$ 35.00	INV 2270, ACC#90062, MAINT
TUELECTRIC	252317	11/14/97	100-515-4430	1,291.00	NOV 97, A#399-8789-99-8, RR ANNEX
LONGHORN DISPOSAL-COMMERCIAL	252890	11/04/97	100-515-4430	178.40	INV 666-077945, A#560560 CH 0260798, NOV 97,
BERRY HARDWARE CO	252564	11/14/97	100-515-4510	22.04	INV 2126795, PO 35418, LESS CM 2126796, RR A
BERRY HARDWARE CO	252567	11/05/97	100-515-4510	110.94	INV 2126273, PO 35418, THERMOSTAT/DUCK TAPE,
BERRY HARDWARE CO	252574	11/06/97	100-515-4510	10.79	INV 2126329, PO 35418, PHOTO CONTROL SWITCH,
BERRY HARDWARE CO	252575	11/03/97	100-515-4510	25.73	INV 2126154, PO 35418, TOILET SEAT/TOOL, RR
BERRY HARDWARE CO	252576	11/05/97	100-515-4510	89.49	INV 2126260, PO 35418, SPRINGS/CONNECTOR/SCR
BERRY HARDWARE CO	252600	11/06/97	100-515-4510	18.45	INV 2126311, PO 35418, LIGHT PANEL, RR ANNEX
BERRY HARDWARE CO	252605	11/07/97	100-515-4510	14.38	INV 2126424, PO 35418, PHOTO CONTROL SWITCH,
BERRY HARDWARE CO	252606	11/10/97	100-515-4510	13.04	INV 2126494, PO 35418, EMGNCY KIT, RR ANNEX
BERRY HARDWARE CO	252607	11/18/97	100-515-4510	88.81	INV 2126948, PO 35418, FILTERS, RR ANNEX
BERRY HARDWARE CO	252619	11/14/97	100-515-4510	3.89	INV 2126797, PO 35418, SCREWS, RR ANNEX
HOPE LUMBER	252629	10/15/97	100-515-4510	109.57	INV 2114929, PO 35024, STUDS/2X6'S, RR ANNEX
Total 515-ROUND ROCK OFF BLDG				\$ 2,011.53	

VOL 0094 PAGE 134

Vendor.....	Invoice Id	Inv Date	Account Number	Expense Amount	Description.....
<b>516-PINE ST ANNEX, GEO</b>					
ALLSTATE PEST CONTROL, INC.	252559	10/31/97	100-516-3319	\$ 20.00	INV 2270, ACC#90062, MAINT
BERRY HARDWARE CO	252508	11/10/97	100-516-4510	0.80	INV 2126523, PO 35418, PLATE, DPS
Total 516-PINE ST ANNEX, GEO				\$ 20.80	
<b>517-WMSON CO JAIL</b>					
ALLSTATE PEST CONTROL, INC.	252559	10/31/97	100-517-3319	\$ 58.00	INV 2270, ACC#90062, MAINT
BERRY HARDWARE CO	252505	11/04/97	100-517-4510	9.40	INV 2126211, PO 35418, TUBULAR PLASTIC, JAIL
BERRY HARDWARE CO	252598	11/06/97	100-517-4510	145.43	INV 2126316, PO 35418, PAINT, JAIL
BERRY HARDWARE CO	252601	11/14/97	100-517-4510	16.49	INV 2126806, PO 35418, RAD BELT HOSE, JAIL
BOB J. JOHNSON & ASSOCIATES, I	252620	10/31/97	100-517-4510	108.32	INV 116215, PO 35072, SERVICE CALL-TRANSFORM
FOX SERVICE COMPANY	252624	10/31/97	100-517-4510	5,830.00	INV 212924, PO 35419, COIL CLEANER ON ALL UN
KENNEDY AIRGAS	252631	10/29/97	100-517-4510	14.00	INV 481301, PO 35122, CARBON DIOX CYL, MAINT
THE FEED STORE	252637	11/07/97	100-517-4510	155.00	INV 0455, PO 35456, SALT PELLET, JAIL
THE FEED STORE	252638	10/28/97	100-517-4510	38.75	INV 8368, PO 35456, SALT PELLETS, JAIL
TRIPLE S PETROLEUM	252640	10/27/97	100-517-4510	71.37	INV 47905, PO 35119, RED DIESELL, MAINT
DOVER ELEVATOR CO., INC.	252711	11/25/97	100-517-4510	564.40	MTHLY MAIN JUST CTR, CTHOUSE & JAIL, MAINTEN
Total 517-WMSON CO JAIL				\$ 7,011.16	
<b>518-COURTS BLDG</b>					
ALLSTATE PEST CONTROL, INC.	252559	10/31/97	100-518-3319	\$ 70.00	INV 2270, ACC#90062, MAINT
BERRY HARDWARE CO	252577	11/04/97	100-518-4510	31.66	INV 2126220, PO 35418, SPRINKLER/HOSE, J/CEN
BERRY HARDWARE CO	252578	10/31/97	100-518-4510	2.44	INV 2126055, PO 34823, NAILS, J/CENTER
BERRY HARDWARE CO	252579	10/31/97	100-518-4510	7.17	INV 2126072, PO 34823, CAULK/UTY KNIFE, J/CE
BERRY HARDWARE CO	252580	10/30/97	100-518-4510	5.10	INV 2125994, PO 34823, BRUSH, J/CENTER
BERRY HARDWARE CO	252581	10/29/97	100-518-4510	1.95	INV 2125902, PO 34823, WOOD GLUE, J/CENTER
BERRY HARDWARE CO	252582	10/29/97	100-518-4510	15.27	INV 2125935, PO 34823, V-BELTS, J/CENTER
BERRY HARDWARE CO	252591	11/05/97	100-518-4510	17.14	INV 2126281, PO 35418, OAK SHELF, J/CENTER
BERRY HARDWARE CO	252594	11/06/97	100-518-4510	12.85	INV 2126307, PO 35418, PAINT/BULB, J/CENTER
BERRY HARDWARE CO	252596	11/07/97	100-518-4510	1.49	INV 2126379, PO 35418, BATTERY, J/CENTER
BERRY HARDWARE CO	252616	11/12/97	100-518-4510	3.84	INV 2126622, PO 35418, WASHERS, J/CENTER
BERRY HARDWARE CO	252617	11/17/97	100-518-4510	12.77	INV 2126921, PO 35418, MOP/GLOVES, J/CENTER
BERRY HARDWARE CO	252618	11/14/97	100-518-4510	11.79	INV 2126807, PO 35418, NYLON HSE, J/CENTER
HOPE LUMBER	252630	10/27/97	100-518-4510	37.76	INV 2116071, PO 35024, BASE, J/CENTER
P & K TRUE VALUE	252633	11/13/97	100-518-4510	2.34	INV 111301-0030, PO 35420, BULBS, J/CENTER
DOVER ELEVATOR CO., INC.	252711	11/25/97	100-518-4510	564.40	MTHLY MAIN JUST CTR, CTHOUSE & JAIL, MAINTEN
Total 518-COURTS BLDG				\$ 798.05	
<b>520-JUVENILE CENTER</b>					
ALLSTATE PEST CONTROL, INC.	252559	10/31/97	100-520-3319	\$ 45.00	INV 2270, ACC#90062, MAINT
BERRY HARDWARE CO	252614	11/18/97	100-520-4510	0.50	INV 2126984, PO 35418, WASHERS, DETENTION
Total 520-JUVENILE CENTER				\$ 45.50	
<b>523-TAYLOR TAX OFFICE</b>					
TUELECTRIC	252320	11/13/97	100-523-4430	\$ 144.44	NOV 97, A#422-1586-98-7, TAYLOR TAX OFFICE
BERRY HARDWARE CO	252603	11/13/97	100-523-4510	11.88	INV 2126764, PO 35418, FAUCET COVER, TAYLOR
BERRY HARDWARE CO	252604	11/13/97	100-523-4510	90.07	INV 2126759, PO 35418, FAUCET W/POP-UP, TAYL

VOL 0094 PAGE 135

Vendor.....	Invoice Id	Inv Date	Account Number	Expense Amount	Description.....
Total 523-TAYLOR TAX OFFICE				\$ 246.39	
525-ADULT PROB TAYLOR					
TUELECTRIC	252321	11/13/97	100-525-4430	\$ 100.69	NOV 97, A#422-1617-99-8, TAYLOR A/PROB
Total 525-ADULT PROB TAYLOR				\$ 100.69	
529-EMS STATION, 305 MLK, GEO					
ALLSTATE PEST CONTROL, INC.	252559	10/31/97	100-529-3319	\$ 28.00	INV 2270, ACC#90062, MAINT
SILENT PARTNER SECURITY	252731	11/25/97	100-529-4430	35.00	ALARM SERVICE, EMS & MAINTENANCE
Total 529-EMS STATION, 305 MLK, GEO				\$ 63.00	
530-PCT #2 OFFICES					
CITY OF CEDAR PARK	252897	11/12/97	100-530-4430	\$ 3,073.23	JUL-SEP 97, UTILITIES, PCT#2
Total 530-PCT #2 OFFICES				\$ 3,073.23	
533-PRETRIAL SERV/OLD JAIL					
ALLSTATE PEST CONTROL, INC.	252559	10/31/97	100-533-3319	\$ 45.00	INV 2270, ACC#90062, MAINT
Total 533-PRETRIAL SERV/OLD JAIL				\$ 45.00	
536-STATE FIRE MARSHALL 311 MAIN ST.					
BERRY HARDWARE CO	252590	11/10/97	100-536-4510	\$ 6.28	INV 2126489, PO 35418, ROOF CEMENT, EMS
BERRY HARDWARE CO	252612	11/18/97	100-536-4510	15.08	INV 2126954, PO 35418, FLOOD LAMP, EMS
Total 536-STATE FIRE MARSHALL 311 MAIN ST.				\$ 21.36	
537-COUNTY PARK/HOGG FARM PRDP					
LONGHORN DISPOSAL-COMMERCIAL	252889	11/03/97	100-537-4430	\$ 212.01	INV 666-075721, A#560560 CF 0732967, NOV 97,
Total 537-COUNTY PARK/HOGG FARM PRDP				\$ 212.01	
538-CENTRAL MAINT FACILITY					
ALLSTATE PEST CONTROL, INC.	252559	10/31/97	100-538-3319	\$ 45.00	INV 2270, ACC#90062, MAINT
BERRY HARDWARE CO	252562	11/12/97	100-538-4510	0.83	INV 2126655, PO 35418, NYLON HOSE MEN, CENT
GRAINGER	252626	11/03/97	100-538-4510	84.03	INV 053-214392-2, PO 35378, BLWER MOTOR, CEN
GRAINGER	252627	11/05/97	100-538-4510	10.77	INV 053-215206-3, PO 35378, TRANSFORMER, CEN
GRAINGER	252628	11/05/97	100-538-4510	33.25	INV 933-420197-8, PO 35378, LESS CM 053-2152
P & K TRUE VALUE	252635	11/10/97	100-538-4510	827.00	INV 111001-0020, PO 35420, ICE MAKER, CENT M
Total 538-CENTRAL MAINT FACILITY				\$ 1,000.89	
540-EMS					
OFFICE FURNITURE DISTRIBUTORS	252455	11/11/97	100-540-3100	\$ 45.52	INV 324158-0, PO 35465, PORTFOLIO, EMS
HARRIS DENTAL & MEDICAL SUPPLY	252433	11/05/97	100-540-3200	41.40	INV 9317, PO 35203, BP CUFF, EMS
MATRIX MEDICAL, INC.	252436	11/04/97	100-540-3200	2.36	INV 584793, PO 34529, UNCUFFED ET TUBE, EMS
MATRIX MEDICAL, INC.	252437	10/22/97	100-540-3200	940.94	INV 582623 LESS CM 944230 & CM 944231, PO 35
PRONEDIX	252456	09/12/97	100-540-3200	51.00	INV 1148649-01, PED ELONG MED CON MASK, EMS
SUN BELT MEDICAL SUPPLY	252474	11/10/97	100-540-3200	31.80	INV 42151, PO 35198, METHAPRED, EMS

VOL 0094 PAGE 136

Vendor.....	Invoice Id	Inv Date	Account Number	Expense Amount	Description.....
UNITED MEDICAL SUPPLY CO.	252475	11/05/97	100-540-3200	13.25	INV 743122, VACUTAINER TUBE, EMS
WAL-MART #01-0475 (RR)	252477	10/03/97	100-540-3200	8.16	INV 2190972, BATTERIES, EMS
ZOLL MEDICAL CORP.	252479	10/30/97	100-540-3200	1,242.00	INV 185954, PO 35190, BATTERIES, PAPER, PACI
FUELMAN	252394	11/10/97	100-540-3301	316.93	INV 79118, A#2303050, NOV 3-9, FUEL, EMS
FUELMAN	252395	11/17/97	100-540-3301	376.68	INV 79401, A#2303050, NOV 10-16, FUEL, EMS
CITY OF GEORGETOWN	252432	11/04/97	100-540-3301	50.64	INV 110497, DIESEL, EMS
GEORGETOWN OIL EXCHANGE	252933	10/07/97	100-540-3301	193.84	INV 1349, OIL CHNG/FUEL FLTR/XTRA OIL, EMS
GEORGETOWN OIL EXCHANGE	252934	10/09/97	100-540-3301	138.39	INV 1446, OIL CHNG/FUEL & AIR FLTRS/ST INSPC
GEORGETOWN OIL EXCHANGE	252935	10/09/97	100-540-3301	94.90	INV 1445 OIL CHNG/FUEL FLTR/XTRA OIL, EMS
GEORGETOWN OIL EXCHANGE	252936	10/06/97	100-540-3301	210.79	INV 1279, OIL CHNG/AIR & FL FLTR/XTRA OIL, E
GEORGETOWN OIL EXCHANGE	252937	10/02/97	100-540-3301	123.89	INV 1076, OIL CHNG/FUEL & AIR FLTR/XTRA OIL,
GEORGETOWN OIL EXCHANGE	252938	10/29/97	100-540-3301	123.89	INV 2372, OIL CHNG/FUEL & AIR FLTR/XTRA OIL,
GEORGETOWN OIL EXCHANGE	252939	10/29/97	100-540-3301	134.39	INV 2351, AIR & FL FLTR/XTRA OIL/ST INSPCTN,
MILLER UNIFORM CO	252440	11/16/97	100-540-3311	154.80	INV 62767, PO 35271, SHIRTS, PANTS PATCHES,
MILLER UNIFORM CO	252442	11/05/97	100-540-3311	154.80	INV 62698, PO 35271, SHIRTS, PANTS, PATCHES,
MILLER UNIFORM CO	252444	11/05/97	100-540-3311	164.80	INV 62700, PO 35271, SHIRTS, PANTS, PATCHES,
MILLER UNIFORM CO	252448	11/03/97	100-540-3311	154.80	INV 62674, PO 35271, SHIRTS, PANTS, PATCHES,
MILLER UNIFORM CO	252449	10/28/97	100-540-3311	154.80	INV 62583, PO 35271, SHIRTS, PANTS, PATCHES,
MILLER UNIFORM CO	252451	11/17/97	100-540-3311	154.80	INV 62922, PO 35181, SHIRTS, PANTS, PATCHES,
MILLER UNIFORM CO	252453	10/20/97	100-540-3311	154.80	INV 62379, PO 35181, SHIRTS, PANTS, PATCHES,
SPECIALIZED BILLING & COLLECTI	252464	10/29/97	100-540-4101	4,002.92	INV 98-06, COLLECTIONS, EMS
SPECIALIZED BILLING & COLLECTI	252465	10/31/97	100-540-4101	2,066.89	INV 98-07, COLLECTIONS, EMS
SPECIALIZED BILLING & COLLECTI	252466	11/04/97	100-540-4101	1,527.65	INV 98-08, COLLECTIONS, EMS
SPECIALIZED BILLING & COLLECTI	252467	11/06/97	100-540-4101	1,146.74	INV 98-09, COLLECTIONS, EMS
SPECIALIZED BILLING & COLLECTI	252468	11/07/97	100-540-4101	1,739.46	INV 98-10, COLLECTIONS, EMS
SPECIALIZED BILLING & COLLECTI	252469	11/11/97	100-540-4101	526.93	INV 98-11, COLLECTIONS, EMS
SPECIALIZED BILLING & COLLECTI	252470	11/11/97	100-540-4101	2,989.21	INV 98-12, COLLECTIONS, EMS
SPECIALIZED BILLING & COLLECTI	252471	11/12/97	100-540-4101	1,185.69	INV 98-13, COLLECTIONS, EMS
SPECIALIZED BILLING & COLLECTI	252472	11/14/97	100-540-4101	4,255.01	INV 98-14, COLLECTIONS, EMS
EMERGENCY MEDICAL SERVICE	252720	11/25/97	100-540-4211	117.04	ONE-HALF TELEPHONE CHARGES
SOUTHWESTERN BELL	252911	11/03/97	100-540-4211	95.91	NOV 97, 260-1029, EMS
SOUTHWESTERN BELL	252913	11/07/97	100-540-4211	128.84	NOV 97, 365-7554, EMS
SOUTHWESTERN BELL	252914	11/07/97	100-540-4211	99.99	NOV 97, 365-8526, EMS
OMNI SAN ANTONIO HOTEL	252402	11/19/97	100-540-4232	150.00	PO 35688, ROOM RESERVATION FEB 16-17, J.SNEE
McCOY MILLER CORP.	252434	11/06/97	100-540-4541	176.10	INV 2958, CONNECTOR CORD, LAMP, EMS
McCOY MILLER CORP.	252435	11/06/97	100-540-4541	155.03	INV 2954, LAMP, EMS
RED DOOR ELECTRONICS	252461	11/11/97	100-540-4541	175.00	INV 10730, STRIP OUT RADIO UNIT 830, EMS
RED DOOR ELECTRONICS	252462	11/14/97	100-540-4541	76.15	INV 10735, REPLACE REAR BULBS, REPAIR ROTATE
WAL-MART #77 (TAYLOR)	252476	10/27/97	100-540-4541	56.84	INV 1204656, ANTIFREEZE, EMS
RED DOOR ELECTRONICS	252463	11/07/97	100-540-4548	32.85	INV 10726, MINAYOR II BATTERIES, EMS
LAUNDRY BASKET	252393	11/05/97	100-540-4800	48.00	NOV 97 EMS LAUNDRY SERVICE
U WASH M	252396	11/05/97	100-540-4800	348.60	OCT 97 EMS LAUNDRY SERVICE
WAL-MART #01-0475 (RR)	252478	11/12/97	100-540-5750	129.96	INV 2768633, PO 35520, 13" COLOR TV, EMS
B T MILLER OFFICE PRODUCTS	252902	10/24/97	100-540-5750	244.32	INV 45151352, PO 33991, CONF TABLE TOP, EMS
Total 540-EMS				\$	26,709.50

## 541-EMS AND MILL/10502 MELLOW MEADOW

ALLSTATE PEST CONTROL, INC.	252559	10/31/97	100-541-3319	\$	28.00	INV 2270, ACC#90062, MAINT
BERRY HARDWARE CO	252568	11/06/97	100-541-4510		126.19	INV 2126345, PO 35418, ROOF CEMENT, EMS STAT

Total 541-EMS AND MILL/10502 MELLOW MEADOW

\$ 154.19

VOL 0094 PAGE 137

Vendor.....	Invoice Id	Inv Date	Account Number	Expense Amount	Description.....
<b>543-ALT SCHOOL/AUSTIN @ UNIVERSITY</b>					
ALLSTATE PEST CONTROL, INC.	252559	10/31/97	100-543-3319	\$ 45.00	INV 2270, ACC#90062, MAINT
BERRY HARDWARE CO	252572	11/10/97	100-543-4510	15.87	INV 2126478, PO 35418, MINWAX WOOD CONDITION
<b>Total 543-ALT SCHOOL/AUSTIN @ UNIVERSITY</b>				<b>\$ 60.87</b>	
<b>545-MAINTENANCE DEPT SHOP</b>					
SILENT PARTNER SECURITY	252731	11/25/97	100-545-4430	\$ 35.00	ALARM SERVICE, EMS & MAINTENANCE
BERRY HARDWARE CO	252565	11/07/97	100-545-4510	28.13	INV 2126400, PO 35418, BOLTS, MAIN SHOP
BERRY HARDWARE CO	252503	10/28/97	100-545-4510	14.85	INV 2125877, PO 34823, SEALANT, MAIN SHOP
BERRY HARDWARE CO	252597	11/06/97	100-545-4510	104.75	INV 2126334, PO 35418, TOOLS & ACCESS, MAIN
BERRY HARDWARE CO	252602	11/13/97	100-545-4510	47.31	INV 2126709, PO 35418, RUBBER BOOTS/WALLBOAR
BERRY HARDWARE CO	252613	11/18/97	100-545-4510	7.78	INV 2126947, PO 34283, LIGHT SET, MAIN SHOP/
BERRY HARDWARE CO	252615	11/10/97	100-545-4510	5.94	INV 2127002, PO 35418, FILTER, MAIN SHOP
GEORGETOWN FIRE & SAFETY	252625	10/31/97	100-545-4510	55.50	INV 5571, PO 35252, REFILL FIRE EXTINGSHRS,
P & K TRUE VALUE	252632	11/18/97	100-545-4510	16.00	INV 111801-0002, PO 35420, SPEAKERPHONE, MAI
P & K TRUE VALUE	252634	11/12/97	100-545-4510	7.64	INV 111201-0002, PO 35420, PHONE BATTERY, MA
P & K TRUE VALUE	252636	10/31/97	100-545-4510	10.48	INV 103101-0046, PO 35420, PATCH KIT/PLUG, M
<b>Total 545-MAINTENANCE DEPT SHOP</b>				<b>\$ 334.26</b>	
<b>551-CONST PCT #1</b>					
D & L PRINTING	252791	11/07/97	100-551-4350	\$ 209.64	INV 1207, PO 35227, DOOR HNGRS/NOTICES, CONS
GEORGETOWN FIRE & SAFETY	252807	11/17/97	100-551-5711	99.80	INV 5599, PO 35403, FIRE EXTNGSHRS, CONST#1
<b>Total 551-CONST PCT #1</b>				<b>\$ 309.44</b>	
<b>552-CONST PCT #2</b>					
DIAMOND SHAMROCK	252765	11/13/97	100-552-3301	\$ 313.24	NOV 97, A#131-494-55, CONST#2
HILL COUNTRY NEWS	252811	11/17/97	100-552-3900	24.00	NOV 17, PO 35209, SUBSCRIPTION, CONST#2
SOUTHWESTERN BELL	252915	11/07/97	100-552-4211	37.33	NOV 97, 335-1013, CONST#2
D & L PRINTING	252789	11/17/97	100-552-4350	209.64	INV 1206, PO 35228, DOOR HNGRS/NOTICES, CONS
CITY OF CEDAR PARK	252735	11/25/97	100-552-4610	67.50	RENT FOR JP#2, CONST#2, HEALTH DEPT.
<b>Total 552-CONST PCT #2</b>				<b>\$ 651.71</b>	
<b>553-CONST PCT #3</b>					
SARMA COLLECTIONS, INC.	252825	10/25/97	100-553-4211	\$ 48.89	INV 10266036, A#1557V0006026, CONST#3
GTE MOBILNET INCORPORATED	252926	11/12/97	100-553-4211	18.12	NOV 97, 864-4559, CONST#3
AT&T WIRELESS SERVICES	252958	11/10/97	100-553-4211	180.62	NOV 97, A#60453545, CONST#3
<b>Total 553-CONST PCT #3</b>				<b>\$ 247.63</b>	
<b>554-CONST PCT #4</b>					
SOUTHWESTERN BELL	252908	11/07/97	100-554-4211	\$ 91.23	NOV 97, 365-3491, CONST#4
MARTY RUBLE	252862	11/13/97	100-554-4212	6.00	NOV 13, EXP REIMB, CONST#4
D & L PRINTING	252792	11/07/97	100-554-4350	209.64	INV 1209, PO 35226, DOOR HNGRS/NOTICES, CONS
<b>Total 554-CONST PCT #4</b>				<b>\$ 306.87</b>	

VOL 0094 PAGE 138

Vendor.....	Invoice Id	Inv Date	Account Number	Expense Amount	Description.....
<b>560-CO SHERIFF</b>					
OFFICE FURNITURE DISTRIBUTORS	252748	11/07/97	100-560-3100	\$ 129.56	INV 323950-0, PO 35399, CALC/WALLET, SHF
WAL-MART #1303 (GEORGETOWN)	252798	10/21/97	100-560-3100	14.79	INV 2672531, PO 35205, INDEX DIVID/CORK BRD,
FUELMAN	252678	11/10/97	100-560-3301	1,348.67	INV 79119, A#2303190, NOV 3-9, FUEL, SHF
MILLER UNIFORM CO	252743	11/10/97	100-560-3311	70.00	INV 62794, PO 35397, BROWN TIES, SHF
HEB GROCERY STORE #237	252738	10/21/97	100-560-3321	32.94	INV 00620226, A#10027537002, LAB PHOTO, SHF
HEB GROCERY STORE #237	252739	10/31/97	100-560-3321	17.25	INV 00620248, A#10027537002, LAB PHOTO, SHF
HEB GROCERY STORE #237	252740	10/28/97	100-560-3321	26.91	INV 00620239, A#10027537002, LAB PHOTO, SHF
WAL-MART #1303 (GEORGETOWN)	252761	11/17/97	100-560-3321	164.96	INV 2144805, PO 35543, 600 FILM, SHF
LIGHTNING POWDER CO., INC.	252741	11/06/97	100-560-3530	150.35	INV 141658, PO 35294, EMPTY KIT BOX/FTHR DST
TEXAS NARCOTICS OFFICERS ASSOC	252405	11/20/97	100-560-3900	60.00	PO 35697, THOA MEMBERSHIP DUES, H.RIGGINS &
QUINLAN PUBLISHING CO., INC.	252752	11/01/97	100-560-3900	68.92	OCT 1, PLC OFF GRIEVANCES BULLETIN, SHF
SOUTHWESTERN BELL	252909	11/01/97	100-560-4211	207.06	NOV 97, 259-2634, SHF
SOUTHWESTERN BELL	252910	11/01/97	100-560-4211	31.23	NOV 97, 259-6487, SHF
FEDERAL EXPRESS CORP	252669	11/03/97	100-560-4212	48.00	INV 4-324-09921, A#1913-2222-3, SHF
UNITED STATES POSTAL SERVICE	252886	12/01/97	100-560-4212	2,000.00	PO 35743, POSTAGE METER REFILL, SHF
HOLIDAY INN-Y. O. RANCH	252401	11/19/97	100-560-4232	143.10	PO 35689, ROOM RESERVATION DEC 16-19, J.CORB
NORA MAXEY	252877	11/07/97	100-560-4232	440.45	NOV 2-6, EXP REIMB, SHF
AUSTIN AMERICAN-STATESMAN	252679	11/11/97	100-560-4310	61.51	AD#BANW00800, A#5129303200, SEX OFFENDER CLA
DRAEGER MOTOR CO., INC	252666	10/10/97	100-560-4541	96.61	INV 06383, PO 34849, HOOD STRIKER PLT REPLCE
WAL-MART #1303 (GEORGETOWN)	252799	10/24/97	100-560-4541	11.94	INV 2672589, PO 35205, LOCKS, SHF
STRAFCO, INC. (SO ACCT.)	252843	10/27/97	100-560-4541	25.65	INV 132638, PO 34848, LIGHTING KIT, SHF
BILL PENTECOST	252943	11/18/97	100-560-4991	55.00	OCT 21, EXP REIMB, SHF
ALLEN'S RECOVERY SERVICE &	252685	10/07/97	100-560-5000	50.00	INV 1543, TOWING, LIC# PZM45C, SHF
ALLEN'S RECOVERY SERVICE &	252687	09/30/97	100-560-5000	50.00	INV 1481, TOWING, LIC#JGM76M, SHF
ALLEN'S RECOVERY SERVICE &	252688	08/12/97	100-560-5000	50.00	INV 29668, TOWING, LIC# TJD32P, SHF
ALLEN'S RECOVERY SERVICE &	252689	08/13/97	100-560-5000	50.00	INV 1111, TOWING, LIC#432-SER, SHF
ALLEN'S RECOVERY SERVICE &	252690	07/31/97	100-560-5000	50.00	INV 29795, TOWING, LIC#LNW-71G, SHF
ALLEN'S RECOVERY SERVICE &	252691	09/15/97	100-560-5000	50.00	INV 1875, TOWING, LIC#566-TPW, SHF
ALLEN'S RECOVERY SERVICE &	252693	07/26/97	100-560-5000	50.00	INV 29778, TOWING, LIC#TCJ-25V, SHF
WAL-MART #1303 (GEORGETOWN)	252794	11/12/97	100-560-5790	559.80	INV 2144981, PO 35384, CAMERAS, SHF
Total 560-CO SHERIFF				\$ 6,114.78	
<b>562-DPS &amp; ABC GEORGETOWN</b>					
LDDS WORLDCOM	252950	10/29/97	100-562-4211	\$ 3.28	OCT 97, A#679188, DPS
Total 562-DPS & ABC GEORGETOWN				\$ 3.28	
<b>563-DRIVERS LIC OFF/TAYLOR</b>					
RICHARD PFEIL	252722	11/25/97	100-563-4610	\$ 131.25	RENT-113 W 4TH, TAYLOR, TAX A/C, VET; D/L; 7
Total 563-DRIVERS LIC OFF/TAYLOR				\$ 131.25	
<b>570-CO JAIL &amp; LAW ENF</b>					
OFFICE FURNITURE DISTRIBUTORS	252744	10/28/97	100-570-3100	\$ 552.66	INV 323007-0, PO 35242, FLDRS/FILES/WRIST PD
OFFICE FURNITURE DISTRIBUTORS	252746	10/28/97	100-570-3100	46.17	INV 323007-1, PO 35242, FLDRS, JAIL
WAL-MART #1303 (GEORGETOWN)	252795	10/24/97	100-570-3100	20.91	INV 2672586, PO 34855, STAPLERS, JAIL
WAL-MART #1303 (GEORGETOWN)	252796	11/06/97	100-570-3100	63.93	INV 2672741, PO 34855, SHWR CURTAINS/APPT BO
WAL-MART #1303 (GEORGETOWN)	252797	10/15/97	100-570-3100	11.30	INV 1974968, PO 34855, 6-WAY SURGE PROT, JAI
SHELLY COBB	252851	11/14/97	100-570-3100	25.24	NOV 12-14, EXP REIMB, SHF



VOL 0094 PAGE 139

Vendor.....	Invoice Id	Inv Date	Account Number	Expense Amount	Description.....
ABL MANAGEMENT, INC.	252670	11/14/97	100-570-3315	6,304.44	INV 15867, NOV 8-14, INMATE MEALS, JAIL
GEO HEALTHCARE SYSTEM, INC.	252671	11/05/97	100-570-3316	56.66	INV 93586/303574, EDWIN H. MANN, JAIL
GEO HEALTHCARE SYSTEM, INC.	252672	10/30/97	100-570-3316	402.35	INV 408740/302510, JACOB PARKER, JAIL
GEO HEALTHCARE SYSTEM, INC.	252675	10/30/97	100-570-3316	126.00	INV 408740/302511, JACOB PARKER, JAIL
GEO HEALTHCARE SYSTEM, INC.	252676	11/04/97	100-570-3316	116.00	INV 93563/303369, DIANA DIAL, JAIL
GEO HEALTHCARE SYSTEM, INC.	252677	11/04/97	100-570-3316	94.00	INV 93553/303328, CHRIS HILLING, JAIL
AUSTIN PATHOLOGY ASSOC.	252680	09/18/97	100-570-3316	60.25	SEP 18, A#7296365APG, J.A.MITCHELL, JAIL
AUSTIN PATHOLOGY ASSOC.	252681	09/24/97	100-570-3316	51.50	SEP 24, A#7297110APG, L.CRENSHEW, JAIL
GEO HEALTHCARE SYSTEM, INC.	252682	11/04/97	100-570-3316	375.03	INV 93553/303325, CHRIS HILLING, JAIL
AUSTIN PATHOLOGY ASSOC.	252683	09/24/97	100-570-3316	60.15	SEP 24, A#7297110APG, L.CRENSHEW, JAIL
GEO HEALTHCARE SYSTEM, INC.	252684	11/05/97	100-570-3316	56.00	INV 93586/303619, EDWIN H. MANN, JAIL
HARRIS DENTAL & MEDICAL SUPPLY	252686	11/05/97	100-570-3316	500.63	INV 9318, GLUCOMETER TEST STRIP, JAIL
HEALTH SOUTH SURGICAL HOSPITAL	252692	11/04/97	100-570-3316	4,291.92	INV 9449, JOHN CLOPTON, JAIL
BRAZOS MOBILE IMAGING	252695	10/31/97	100-570-3316	130.00	INV WCD-010B, C.JOHNSON, JAIL
BRAZOS MOBILE IMAGING	252696	10/31/97	100-570-3316	125.00	INV WCD-010C, G.LEYVA, JAIL
BRAZOS MOBILE IMAGING	252697	10/31/97	100-570-3316	35.00	INV WCD-010D, I.C.IBEABUCHI, JAIL
BRAZOS MOBILE IMAGING	252698	10/31/97	100-570-3316	35.00	INV WCD-010E, G.BARRON, JAIL
BRAZOS MOBILE IMAGING	252699	10/31/97	100-570-3316	35.00	INV WCD-010F, J.C.MITCHELL, JAIL
BRAZOS MOBILE IMAGING	252700	10/31/97	100-570-3316	125.00	INV WCD-010G, J.D.VANNIS, JAIL
BRAZOS MOBILE IMAGING	252701	10/31/97	100-570-3316	35.00	INV WCD-010H, J.M.TORRES, JAIL
BRAZOS MOBILE IMAGING	252702	10/31/97	100-570-3316	35.00	WCD-010I, R.P.RIGGINS, JAIL
BRAZOS MOBILE IMAGING	252703	10/31/97	100-570-3316	35.00	INV WCD-010J, G.GONZALES, JAIL
BRAZOS MOBILE IMAGING	252704	10/31/97	100-570-3316	40.00	INV WCD-010K, S.A.RUX, JAIL
BRAZOS MOBILE IMAGING	252705	10/31/97	100-570-3316	35.00	INV WCD-010L, L.R.VALASQUEZ, JAIL
BRAZOS MOBILE IMAGING	252706	10/31/97	100-570-3316	35.00	INV WCD-010M, M.L.JOHNSON, JAIL
BRAZOS MOBILE IMAGING	252707	10/31/97	100-570-3316	125.00	INV WCD-010N, B. THOMPSON, JAIL
GEORGETOWN WOMEN'S CENTER, PA	252757	11/04/97	100-570-3316	265.00	NOV 4, A#007024-02, ROSIE M SCOTT, JAIL
LITERACY COUNCIL	252724	11/25/97	100-570-4000	5,651.83	BETTER CHANCE, JAIL
VAUGHN MCWILLIAMS	252850	11/13/97	100-570-4231	6.32	NOV 13, EXP REIMB, SHF
GARY KEETON	252857	11/10/97	100-570-4231	10.80	OCT 29, EXP REIMB, SHF
GARY KEETON	252858	11/10/97	100-570-4231	59.38	NOV 6, EXP REIMB, SHF
GARY KEETON	252859	11/18/97	100-570-4231	146.02	NOV 12, EXP REIMB, SHF
DIANE NEWSON	252868	11/18/97	100-570-4231	58.76	NOV 13-14, EXP REIMB, SHF
CAPITAL GRAPHICS	252708	09/30/97	100-570-4350	218.53	INV 9701403, MAGISTRATION FORMS, JAIL
MINOLTA CORPORATION	252755	10/31/97	100-570-4500	411.91	INV 7103124771, A#13012, SEP 97, JAIL
BRAZOS MOBILE IMAGING	252694	10/31/97	100-570-4705	125.00	INV WCD-010A, R.D.WEBSTER, JAIL
IKON OFFICE SOLUTIONS	252737	10/27/97	100-570-4999	100.30	INV 428026, REPAIR OF MAGISTRATES COPIER, JA
ERIC McCONAUGHEY	252941	11/12/97	100-570-4999	15.00	NOV 12, EXP REIMB, SHF
STRAFCO, INC. (SO ACCT.)	252842	10/06/97	100-570-5720	8.42	INV 130470, PO 34848, MANDREL ST, JAIL
ALL POINTS COMMUNICATIONS	252674	11/06/97	100-570-5730	2,376.00	INV 307293, PO 35383, P94YGT20A2 RADIO, JAIL
Total 570-CO JAIL & LAW ENF				\$	23,573.41
572-ADULT PROBATION					
RICHARD PFEIL	252725	11/25/97	100-572-4610	\$	525.00 RENT-117 W 4TH, TAYLOR, A/PROB; 7/1/97-6/30/
Total 572-ADULT PROBATION				\$	525.00
576-JUVENILE SERVICES					
A WORLD FOR CHILDREN	252380	11/08/97	100-576-3310	\$	2,561.84 OCT 97, PO 34885, RES SERVICES FOR B.HALL, J
CONCHO VALLEY HOME	252381	10/31/97	100-576-3310	1,800.48	OCT 97, PO 34887, RES SERV FOR K.GOODROW, J/
MEADOW PINES HOSPITAL	252421	10/31/97	100-576-3310	4,500.48	OCT 97, PO 34888, W.ADKINS, RESIDENTIAL SERV

VOL 0094 PAGE 140

Vendor.....	Invoice Id	Inv Date	Account Number	Expense Amount	Description.....
DESERT HILLS	252384	11/01/97	100-576-4992	2,860.88	OCT 97, PO 34910, RES SERV FOR B.OVERBEY & M
WAL-MART #1303 (GEORGETOWN)	252427	10/03/97	100-576-5750	288.00	INV 1790491, PO 34695, REFRIGERATOR & MICROW
WAL-MART #1303 (GEORGETOWN)	252428	10/22/97	100-576-5750	159.00	INV 2672564, PO 34695, REFRIGERATOR, J/SERV
Total 576-JUVENILE SERVICES				\$ 12,170.68	
581-9-1-1 COMMUNICATIONS					
SUSIE KOVAR	252940	11/10/97	100-581-4232	\$ 140.10	NOV 4-6, EXP REIMB, DISPATCH
PAMELA SCHILLING	252945	11/10/97	100-581-4232	127.84	NOV 18, EXP REIMB, 911 COMM
ROBERTS PRINTING CO., INC	252824	11/11/97	100-581-4350	567.00	INV 2688, PO 35302, RADIO LOG SHEETS, 911 CO
TUELECTRIC	252893	11/13/97	100-581-4545	239.88	NOV 97, A#753-1921-99-2, DISPATCH
Total 581-9-1-1 COMMUNICATIONS				\$ 1,074.82	
630-HEALTH DIST					
SOUTHWESTERN BELL	252326	10/25/97	100-630-4211	\$ 97.78	OCT 97, 082-9578, HEALTH DIST
ACS DATALINE, INC.	252558	09/30/97	100-630-4211	9,497.11	INV 100860, REARRANGING OF LINES & THINGS, H
AT&T	252887	10/15/97	100-630-4211	5.26	OCT 97, A#057-774-7590-001, 352-5201, H/DEPT
AT&T WIRELESS SERVICES	252891	11/08/97	100-630-4211	9.78	INV 8720000, A#530-038186-14, PAGER, H/DEPT
AT&T WIRELESS SERVICES	252957	11/10/97	100-630-4211	7.84	NOV 97, A#60713807, H/DEPT
CITY OF CEDAR PARK	252735	11/25/97	100-630-4610	552.50	RENT FOR JP#2, CONST#2, HEALTH DEPT.
WILLIAMSON CO HEALTH DISTRICT	252710	11/25/97	100-630-4705	39,774.24	COOP AGREEMENT - 1997-98 YEAR
COLUMBIA MEDICAL CENTER OF ROU	252397	11/26/97	100-630-4905	3,417.37	NOV 26, PMT FOR INDIGENTS
JOHNS COMMUNITY HOSPITAL	252398	11/26/97	100-630-4905	903.31	NOV 26, PMT FOR INDIGENTS
GEORGETOWN HOSP	252399	11/26/97	100-630-4905	2,543.78	NOV 26, PMT FOR INDIGENTS
CARDIOTHORACIC & VASCULAR SURG	252400	11/26/97	100-630-4905	49.27	NOV 26, PMT FOR INDIGENTS
Total 630-HEALTH DIST				\$ 56,858.24	
640-PUBLIC ASSISTANCE					
DR. STEPHEN BENOLD, M.D.	252714	11/25/97	100-640-4116	\$ 3,000.00	COUNT DOCTOR SERVICES PER AGREEMENT
WILLIAMSON-BURNET COUNTIES	252715	11/25/97	100-640-4611	2,833.33	1997-98 BUDGET, \$34,000.00; 1/12 = \$2,833.33
WILLIAMSON CO MENTAL	252718	11/25/97	100-640-4703	4,839.20	1997-98 BUDGET, \$63,000.00; 1/12 = \$5,250.00
ROUND ROCK NORTH PARTNERSHIP	252727	11/25/97	100-640-4703	4,108.00	FEB 97-JAN 98, LEASE#638-9652-E7A, ROUND ROC
WILLIAMSON-BURNET	252729	11/25/97	100-640-4962	4,166.66	1997-98 BUDGET, \$50,000.00; 1/12 = \$4,166.66
TEXAS COOP TRAPPING FUND	252668	11/01/97	100-640-4965	1,400.00	INV 1048, OCT 97, WILDLIFE DAMAGE MGMT
WILLIAMSON CO HUMANE SOC	252610	10/31/97	100-640-4991	2,150.00	OCT 97, SHELTERING CONTRACT
WILLIAMSON CO HUMANE SOC	252736	11/25/97	100-640-4991	2,083.33	ANIMAL CARE & CONTROL PER CONTRACT 10/1/97 -
Total 640-PUBLIC ASSISTANCE				\$ 24,580.52	
665-EXTENSION SERVICE					
AT&T WIRELESS SERVICES	252956	11/10/97	100-665-4211	\$ 35.00	NOV 97, 810-0125, A#60530466, EXT SERV
AT&T WIRELESS SERVICES	252959	11/10/97	100-665-4211	113.31	NOV 97, A#018-0848, EXT SERV
Total 665-EXTENSION SERVICE				\$ 148.31	
694-RR ANNEX ADDITION					
TUELECTRIC	252318	11/14/97	100-694-4430	\$ 1,385.63	NOV 97, A#754-0911-98-4, RR ANNEX ADDITION
BERRY HARDWARE CO	252611	11/17/97	100-694-4510	2.80	INV 2126904, PO 35418, SCREWS, RR ANNEX ADD
Total 694-RR ANNEX ADDITION				\$ 1,388.43	

VOL 0094 PAGE 141

Vendor..... Invoice Id Inv Date Account Number Expense Amount Description.....

Total Fund Expenditures	\$ 314,306.08
Less Fund Discounts	0.00
Less Fund Credits	0.00
Cash Required 100-GENERAL FUND	\$ 314,306.08

VOL 0094 PAGE 142

Vendor.....	Invoice Id	Inv Date	Account Number	Expense Amount	Description.....
<b>210-UNIFIED SYSTEM</b>					
EVINS TEMPORARIES, INC.	252404	11/05/97	200-210-1100	278.77	INV 109524, PO 34928, CLERK-DATA ENTRY, URS
FASTENAL	252402	10/31/97	200-210-3102	140.00	INV ASTX21145, PO 35364, MARKING PAINT, URS
FASTENAL	252403	10/31/97	200-210-3102	249.60	INV ASTX21149, PO 35360, IGLOO COOLER, URS
FLORENCE HARDWARE	252405	11/10/97	200-210-3301	12.93	INV 11187004, PO 35335, CHAIN OIL, URS
TRIPLE S PETROLEUM	252536	11/13/97	200-210-3301	2,026.96	INV 49570, PO 35349, LEAD FREE/DIESEL, URS
TRIPLE S PETROLEUM	252537	11/13/97	200-210-3301	1,973.07	INV 49614, PO 35349, LEAD FREE/DIESEL, URS
TRIPLE S PETROLEUM	252538	11/04/97	200-210-3301	1,476.04	INV 48049, PO 35349, LEAD FREE/DIESEL, URS
CAPITOL AGGREGATES - AUSTIN	252438	10/31/97	200-210-3550	1,936.67	INV A-04047, PO 35102, HM TYPE D, URS
CAPITOL AGGREGATES - AUSTIN	252439	11/05/97	200-210-3550	792.68	INV A-04585, PO 35315, HM TYPE D, URS
CAPITOL AGGREGATES - AUSTIN	252441	11/05/97	200-210-3550	5,283.52	INV A-04586, PO 35315, HM TYPE D, URS
CAPITOL AGGREGATES - AUSTIN	252445	11/05/97	200-210-3550	252.89	INV A-04583, PO 35366, HM TYPE D, URS
CAPITOL AGGREGATES - AUSTIN	252447	11/05/97	200-210-3550	2,574.12	INV A-04584, PO 35366, HM TYPE D, URS
CAPITOL AGGREGATES - AUSTIN	252450	11/12/97	200-210-3550	464.36	INV A-05211, PO 35315, HM TYPE D, URS
KOCH MATERIALS COMPANY	252501	11/09/97	200-210-3550	2,992.93	INV 146586, PO 35455, SS-1, URS
KOCH MATERIALS COMPANY	252502	10/31/97	200-210-3550	3,022.69	INV 144155, PO 35369, SS-1, URS
TEXAS FUEL & ASPHALT	252525	11/07/97	200-210-3550	2,913.45	INV 36070, PO 34999/35367, AC-5, URS
TEXAS FUEL & ASPHALT	252526	11/05/97	200-210-3550	2,877.37	INV 35954, PO 35137/35143, AC-3, URS
TEXAS FUEL & ASPHALT	252527	11/05/97	200-210-3550	3,137.37	INV 35968, PO 35132, AC-5, URS
VULCAN MATERIALS CO	252539	10/31/97	200-210-3550	6,587.88	INV 451867, PO 35145, LRA PREMIX TY D, URS
CAPITOL AGGREGATES - AUSTIN	252443	11/12/97	200-210-3551	310.84	INV A-05210, PO 35330, HM TYPE D, URS
GEORGETOWN TRANSPORTATION, INC	252407	11/03/97	200-210-3551	6,522.34	INV 19798, PO 34956, HAULING, URS
GEORGETOWN TRANSPORTATION, INC	252408	11/10/97	200-210-3551	910.62	INV 19867, PO 34956, HAULING, URS
GEORGETOWN TRANSPORTATION, INC	252409	11/10/97	200-210-3551	3,586.35	INV 19868, PO 35361, HAULING, URS
PIONEER CONCRETE OF TEXAS	252506	11/05/97	200-210-3551	154.98	INV 629826, PO 35365, GR 3 CURSTH, URS
PIONEER CONCRETE OF TEXAS	252507	11/05/97	200-210-3551	1,708.98	INV 629825, PO 35365, GR 3 CURSTH, URS
PIONEER CONCRETE OF TEXAS	252508	11/06/97	200-210-3551	1,316.78	INV 630665, PO 35365, GR 3 CURSTH, URS
SAN GABRIEL SAND & GRAVEL, LLP	252516	11/04/97	200-210-3551	7,747.65	INV 0328, PO 34646, ROAD BASE MATERIAL, URS
SAN GABRIEL SAND & GRAVEL, LLP	252517	11/10/97	200-210-3551	2,296.71	INV 0338, PO 34646, ROAD BASE MATERIAL, URS
TEXAS CRUSHED STONE CO	252521	11/14/97	200-210-3551	561.01	INV 695028, PO 35172, FLEX BASE, URS
TEXAS CRUSHED STONE CO	252522	11/11/97	200-210-3551	435.38	INV 694694, PO 35174, FLEX BASE, URS
TEXAS CRUSHED STONE CO	252523	10/31/97	200-210-3551	183.44	INV 693665, PO 35000, FLEX BASE, URS
TEXAS CRUSHED STONE CO	252524	11/05/97	200-210-3551	122.99	INV 694014, PO 35174, FLEX BASE, URS
TRANSIT MIX	252529	10/31/97	200-210-3552	333.75	INV 362618, PO 35263, 3000 PSI, URS
TRANSIT MIX	252530	10/30/97	200-210-3552	321.65	INV 36081, PO 35263, 3000 PSI, URS
TRANSIT MIX	252531	10/29/97	200-210-3552	275.70	INV 35901, PO 35263, 3000 PSI, URS
TRANSIT MIX	252532	11/03/97	200-210-3552	459.50	INV 36469, PO 35347, CLASS B STATE, URS
TRANSIT MIX	252533	11/05/97	200-210-3552	459.50	INV 36800, PO 35347, CLASS B STATE, URS
TRANSIT MIX	252534	11/05/97	200-210-3552	459.50	INV 36801, PO 35347, 3000 PSI, URS
TRANSIT MIX	252535	11/07/97	200-210-3552	459.50	INV 37147, PO 35347, 3000 PSI, URS
3M TRAFFIC CONTROL MATERIALS	252415	11/09/97	200-210-3553	720.00	INV TP21707, PO 35264, PROTECTIVE OVERLAY FI
GRANGER LUMBER COMPANY	252490	11/17/97	200-210-3553	408.50	INV 2608, PO 35356, LUMBER, URS
GRANGER LUMBER COMPANY	252491	11/17/97	200-210-3553	16.00	INV 2609, PO 35336, BOLTS/NUTS, URS
LANSON PRODUCTS, INC.	252503	11/06/97	200-210-3553	200.17	INV 7226638, PO 35355, MISC NUTS & BOLTS, UR
SMITH MUNICIPAL SUPPLIES	252518	10/24/97	200-210-3553	445.85	INV 961608, PO 35153, ROAD SIGNS, URS
TAYLOR IRON-MACHINE WORKS, INC	252520	11/17/97	200-210-3553	178.58	INV 36931, PO 35354, ANGLE IRON, URS
CONTECH CONSTRUCTION PRODUCTS,	252452	11/11/97	200-210-3558	3,364.80	INV 56-11-0029, PO 35363, HC PIPE GALV, URS
CONTECH CONSTRUCTION PRODUCTS,	252454	09/29/97	200-210-3558	949.00	INV 56-09-0145, PO 34432, HC PIPE GALV, URS
CITY OF GEORGETOWN	252882	11/06/97	200-210-3599	134.57	NOV 97, A#13-0020-10, URS
BROWN, MCCARROLL, SHEETS	252408	10/31/97	200-210-4100	260.96	OCT 97, PROFESSIONAL SERVICES, LZ VS. WM CO
AUS-TEX SERVICE STATION EQUIPM	252417	10/31/97	200-210-4100	4,704.65	INV 101202, JOB #4464, CUST#WI20016, URS

VOL 0094 PAGE 143

Vendor.....	Invoice Id	Inv Date	Account Number	Expense Amount	Description.....
REFERENCE TECHNOLOGY	252512	11/07/97	200-210-4100	30.00	INV WCM-012J, OCT 97 WEB SITE MAINT, URS
DIXON LAND SURVEYING	252459	11/06/97	200-210-4150	2,500.00	INV 00004801, PO 35320, DRAFTING/CREATING SE
LUCENT TECHNOLOGIES	252900	10/16/97	200-210-4211	10.60	INV 3196304424, A#0017-346-6434, URS
JAMES HALL	252854	11/07/97	200-210-4232	47.68	OCT 4-6, EXP REIMB, URS
CITY OF AUSTIN	252803	11/03/97	200-210-4500	394.14	OCT 97, MAIN OF TRAFFIC SIGNALS, URS
ANDERSON MILL MUD	252404	11/13/97	200-210-4530	35.00	OCT 15-NOV 15, MAIN OF MEDIANS, URS
KENNEDY AIRGAS	252496	10/31/97	200-210-4540	5.06	INV 490854, PO 34959, ACETY, URS
KENNEDY AIRGAS	252497	10/31/97	200-210-4540	30.34	INV 490855, PO 34959, OXYGEN/ACETY, URS
KENNEDY AIRGAS	252498	10/31/97	200-210-4540	42.00	INV 491962, PO 34959, OXYGEN, URS
KENNEDY AIRGAS	252499	10/31/97	200-210-4540	17.60	INV 491341, PO 34959, OXYGEN/ACETY, URS
KENNEDY AIRGAS	252500	10/31/97	200-210-4540	17.60	INV 490789, PO 34959, OXYGEN/ACETY, URS
TAYLOR IRON-MACHINE WORKS, INC	252519	11/12/97	200-210-4540	40.00	INV 36912, PO 000583L, SHEAR PLATE, URS
C & O UPHOLSTERY & TRIM SHOP	252409	11/08/97	200-210-4900	180.00	INV 0134, PO 35325, SEAT FOR 1990 CHEVY, URS
C & O UPHOLSTERY & TRIM SHOP	252413	11/16/97	200-210-4900	75.00	INV 0137, PO 35124, SEAT REPAIR, URS
COOPER EQUIPMENT CO	252457	11/10/97	200-210-4900	893.20	INV 14403, PO 35453, CONVEYOR BELT, URS
DON HEWLETT CHEVROLET,	252460	11/06/97	200-210-4900	184.62	INV 112559, PO 35323, TANK, URS
HOPKINS AUTO PARTS	252493	11/07/97	200-210-4900	18.15	INV 118627, PO 35337, CON/ROTOR, URS
RONCO EQUIPMENT CO.	252514	11/05/97	200-210-4900	515.81	INV S76577, PO 000560L, STEEL PIPE/HOSES, UR
RONCO EQUIPMENT CO.	252515	11/11/97	200-210-4900	207.72	INV S77293, PO 000570L, CYLINDER/FREIGHT, UR
CONLEY LOTT NICHOLS MACHINERY	252528	11/05/97	200-210-4900	452.87	INV P79619, PO 35339, FLEX EXHAUST SECTION,
WALKER TIRE COMPANY	252550	11/14/97	200-210-4900	224.44	INV LT-21493, PO 35444, TIRES, URS
WALKER TIRE COMPANY	252553	11/14/97	200-210-4900	6,364.00	INV LT-21452, PO 35444, TIRES, URS
WILLIAMSON CO LANDFILL	252555	11/03/97	200-210-4991	302.10	INV 686-002187, PO 34841, A#660555WC0000273,
LONGHORN DISPOSAL-COMMERCIAL	252892	11/03/97	200-210-4991	70.22	INV 666-074935, A#560560 CF 0351734, NOV 97,
LONGHORN DISPOSAL-COMMERCIAL	252894	11/04/97	200-210-4991	315.00	INV 666-078459, A#560560 RF 1046617, NOV 97,
RUTH GAUL	252480	10/27/97	200-210-4999	239.77	OCT 27, DAMAGES TO VEHICLE BY MOWER, URS
FLORENCE HARDWARE	252486	11/14/97	200-210-4999	7.95	INV 111470001, PO 35335, 2-PRO CHIP BRUSH, U
GRANGER LUMBER COMPANY	252492	11/03/97	200-210-4999	2.50	INV 2605, PO 35336, BLK SPRAY PAINT, URS
REDDY ICE, LTD.	252509	10/03/97	200-210-4999	56.88	INV 545358, PO 34828, ICE, URS
REDDY ICE, LTD.	252510	10/17/97	200-210-4999	85.32	INV 547240, PO 34828, ICE, URS
REDDY ICE, LTD.	252511	10/03/97	200-210-4999	99.36	INV 545450, PO 34828, ICE, URS
JEZEK AUTOMOTIVE SUPPLY	252495	11/12/97	200-210-5000	4.13	INV 93785, PO 35340, A/FRZ TEST, URS
OFFICE FURNITURE DISTRIBUTORS	252505	10/28/97	200-210-5000	243.72	INV 322993-0, PO 35262, METAL FORM HOLDER, U
REPA PLUMBING & A/C, INC	252513	11/18/97	200-210-5753	35.33	NOV 18, PO 000585L, 36" THERMOCOUPLER, URS
Total 210-UNIFIED SYSTEM				\$	92,751.66
212-R & B GEN FUND, R&B #2					
GREG BOATRIGHT	252876	11/12/97	200-212-4211	\$	60.39 SEP 97, PHONE REIMB, PCT#2
GREG BOATRIGHT	252874	11/12/97	200-212-4231	166.47	SEP 15-30, EXP REIMB, PCT#2
GREG BOATRIGHT	252875	11/12/97	200-212-4231	327.05	OCT 97, EXP REIMB, PCT#2
Total 212-R & B GEN FUND, R&B #2				\$	553.91
213-R & B GEN FUND, R&B #3					
REFERENCE TECHNOLOGY	252844	11/07/97	200-213-4500	\$	10.00 INV WCM-012C, OCT WEB SITE MAINT, PCT#3
Total 213-R & B GEN FUND, R&B #3				\$	10.00
214-R & B GEN FUND, R&B #4					
SOUTHWESTERN BELL	252905	11/07/97	200-214-4211	\$	154.41 NOV 97, 365-2311, PCT#4
AT&T WIRELESS SERVICES	252955	10/25/97	200-214-4211	73.68	OCT 97, 426-7031, A#60850484, PCT#4

VOL 0094 PAGE 144

Vendor.....	Invoice Id	Inv Date	Account Number	Expense Amount	Description.....
RED DOOR ELECTRONICS	252823	10/28/97	200-214-4999	71.50	INV 10701, PO 35475, MOBILE ANT, PCT#4
GENERAL SERVICES COMMISSION	252907	10/31/97	200-214-4999	99.65	OCT 31, SUBSCRIPTION TO TX SURPLUS PROPERTY

Total 214-R & B GEN FUND, R&B #4	\$	399.24
----------------------------------	----	--------

Total Fund Expenditures	\$	93,714.81
Less Fund Discounts		0.00
Less Fund Credits		0.00

Cash Required 200-R & B GEN FUND	\$	93,714.81
----------------------------------	----	-----------

VOL 0094 PAGE 145

Vendor.....	Invoice Id	Inv Date	Account Number	Expense Amount	Description.....
680-LAW LIBRARY					
HILL COUNTRY REVISION SERVICE	252734	11/25/97	350-680-4100	\$ 450.00	MONTHLY LAW LIBRARY MAINTENANCE
FURNITURE IN THE RAW, INC.	252557	10/17/97	350-680-5750	1,000.00	INV 47603, PO 35185, COMPUTER ARMOIRE, URS
Total 680-LAW LIBRARY				\$ 1,450.00	
Total Fund Expenditures				\$ 1,450.00	
Less Fund Discounts				0.00	
Less Fund Credits				0.00	
Cash Required 350-LAW LIBRARY FUND				\$ 1,450.00	

VOL 0094 PAGE 146

Vendor.....	Invoice Id	Inv Date	Account Number	Expense Amount	Description.....
385-CO CLK RECORDS					
MICRO IMAGES	252821	11/10/97	385-385-3100	\$ 758.62	INV 22591, PO 35282, PLASMON DISK, C/CLK
THE SOFTWARE GROUP, INC.	252832	11/07/97	385-385-3100	283.30	INV 18214, PO 35499, 3-PART RECEIPTS, C/CLK
THE SOFTWARE GROUP, INC.	252833	11/07/97	385-385-3100	142.32	INV 18212, PO 34903, 3-PART RECEIPTS, C/CLK
BUREAU OF VITAL STATISTICS	252782	11/10/97	385-385-4320	106.14	NOV 10, A#C5000069, BUDG#5D530, FUND #153, C
HART FORMS & SERVICES	252809	10/31/97	385-385-4620	192.37	INV 101706, RECURRING STORAGE, C/CLK
LANDATA TECHNOLOGIES, INC.	252840	10/31/97	385-385-4955	12,345.89	INV D18190, A#W12000, OFF PUBLIC RECORDS, C/
Total 385-CO CLK RECORDS				\$ 13,828.64	
Total Fund Expenditures				\$ 13,828.64	
Less Fund Discounts				0.00	
Less Fund Credits				0.00	
Cash Required 385-RCDS MGMT & PRSRV FUND (COUNTY CLERK)				\$ 13,828.64	



VOL 0094 PAGE 147

Vendor.....	Invoice Id	Inv Date	Account Number	Expense Amount	Description.....
390-RCDS MGMT & PRSRV FUND (COUNTY WIDE)					
PRECISION MICROGRAPHICS	252661	10/30/97	390-390-4550	\$ 396.09	INV 10306, IMAGES FILMED, D/CLERK
PRECISION MICROGRAPHICS	252878	11/13/97	390-390-4550	394.38	INV 10353, IMAGES FILMED, D/CLK
PRECISION MICROGRAPHICS	252879	11/07/97	390-390-4550	370.25	INV 10347, IMAGES FILMED, D/CLK
Total 390-RCDS MGMT & PRSRV FUND (COUNTY WIDE)				\$ 1,160.72	
Total Fund Expenditures				\$ 1,160.72	
Less Fund Discounts				0.00	
Less Fund Credits				0.00	
Cash Required 390-RCDS MGMT & PRSRV FUND (COUNTY WIDE)				\$ 1,160.72	

**VOL 0094** PAGE **148**

Vendor.....	Invoice Id	Inv Date	Account Number	Expense Amount	Description.....
696-CO ATTY HOT CKS JOSEPH V. FIACCO	252657	11/11/97	406-696-4999	\$ 100.00	NOV 11, CARICATURE OF GENE TAYLOR, C/ATTY
Total 696-CO ATTY HOT CKS				\$ 100.00	
Total Fund Expenditures				\$ 100.00	
Less Fund Discounts				0.00	
Less Fund Credits				0.00	
Cash Required 406-CO ATTY HOT CK FUND				\$ 100.00	

VOL 0094 PAGE 149

Vendor.....	Invoice Id	Inv Date	Account Number	Expense Amount	Description.....
352					
CENTURY ANIMAL HOSPITAL, INC.	252662	10/31/97	410-352-2000	\$ 307.00	INV 66212, CLIENT#5340, PULPECTOMY, SHF
Total 352				\$ 307.00	
Total Fund Expenditures				\$ 307.00	
Less Fund Discounts				0.00	
Less Fund Credits				0.00	
Cash Required 410-SHF/OFF DRUG FUND				\$ 307.00	

VOL 0094 PAGE 150

Vendor.....	Invoice Id	Inv Date	Account Number	Expense Amount	Description.....
500-STATE JAIL					
CCA/CONCEPT	252839	11/04/97	503-500-4141	\$ 150,476.30	OCT 97, INMATE BILLING, WYOMING
CCA/CONCEPT	252841	11/04/97	503-500-4141	1,860.50	OCT 97, MEDICAL BILLING, WYOMING
Total 500-STATE JAIL				\$ 152,336.80	
Total Fund Expenditures				\$ 152,336.80	
Less Fund Discounts				0.00	
Less Fund Credits				0.00	
Cash Required 503-OUT OF STATE INMATE BILLING FUND				\$ 152,336.80	

VOL 0094 PAGE 151

Vendor.....	Invoice Id	Inv Date	Account Number	Expense Amount	Description.....
690-EMS ADMIN					
ELEVEN THIRTEEN ARCHITECTS, IN	252645	09/30/97	701-690-4100	\$ 1,150.00	INV 1464, CONST ADMIN SERVICES APR 1-SEP 15,
Total 690-EMS ADMIN				\$ 1,150.00	
Total Fund Expenditures				\$ 1,150.00	
Less Fund Discounts				0.00	
Less Fund Credits				0.00	
Cash Required 701-1996 CAPITAL PROJECTS FUND				\$ 1,150.00	

VOL 0094 PAGE 152

Vendor.....	Invoice Id	Inv Date	Account Number	Expense Amount	Description.....
699-CEDAR PARK ANNEX					
TEXAS DEPT OF LICENSING	252742	11/11/97	702-699-4999	\$ 235.00	NOV 11, PROJ#EABPRJ97004562, INSPECTION FEE
Total 699-CEDAR PARK ANNEX				\$ 235.00	
Total Fund Expenditures				\$ 235.00	
Less Fund Discounts				0.00	
Less Fund Credits				0.00	
Cash Required 702-JULY 1997 CO ISSUANCE				\$ 235.00	

VOL 0094 PAGE 153

Vendor.....	Invoice Id	Inv Date	Account Number	Expense Amount	Description.....
703					
CAPITAL SURVEYING COMPANY, INC	252947	10/31/97	703-703-4100	\$ 6,905.00	INV 9710050, PROFESSIONAL SERVICES, ROW MAPP
Total 703				\$ 6,905.00	
Total Fund Expenditures				\$ 6,905.00	
Less Fund Discounts				0.00	
Less Fund Credits				0.00	
Cash Required 703-7/97 CAP PROJ - ROADS				\$ 6,905.00	

VOL 0094 PAGE 154

Vendor.....	Invoice Id	Inv Date	Account Number	Expense Amount	Description.....
902-911 ADDRESSING 97-98					
SHANNAN HICKS	252864	11/13/97	902-902-4212	\$ 1.56	NOV 6, EXP REIMB, 911 ADDRESSING
SHANNAN HICKS	252864	11/13/97	902-902-4232	31.29	NOV 6, EXP REIMB, 911 ADDRESSING
Total 902-911 ADDRESSING 97-98				\$ 32.85	
Total Fund Expenditures				\$ 32.85	
Less Fund Discounts				0.00	
Less Fund Credits				0.00	
Cash Required 902-911 ADDRESSING 97-98				\$ 32.85	



VOL 0094 PAGE 155

Vendor.....	Invoice Id	Inv Date	Account Number	Expense Amount	Description.....
923-COMMUNITY CORRECTIONS ASSISTANCE 97-98					
EAGLE OFFICE PRODUCTS	252390	11/03/97	923-923-3000	\$ 43.39	INV 51018, PO 35308, TRANS FILM/PMER STRIP,
EAGLE OFFICE PRODUCTS	252391	11/03/97	923-923-3000	69.00	INV 51019, PO 35318, TNR CARTRIDGE, J/SERV
EAGLE OFFICE PRODUCTS	252392	11/17/97	923-923-3000	217.56	INV 51202, PO 35503, FABRIC BOARD/TNR CARTD
HERITAGE PRINTING	252414	11/14/97	923-923-3000	17.96	NOV 14, PO 35411, RECEIPT BOOKS, J/SERV
OFFICE FURNITURE DISTRIBUTORS	252422	10/31/97	923-923-3000	425.07	INV 323392-0, PO 35306, OFFICE SUPPLIES, J/S
EAGLE OFFICE PRODUCTS	252389	11/03/97	923-923-3101	319.83	INV 51017, PO 35312, ART PAPER/EASEL, J/SERV
WAL-MART #1303 (GEORGETOWN)	252426	11/05/97	923-923-3101	116.99	INV 2672724, PO 34921, EDUCATIONAL MATERIALS
ABL MANAGEMENT, INC.	252376	10/10/97	923-923-3306	1,038.46	INV 15857, PO 34913, OCT 4-10, STUDENT MEALS
ABL MANAGEMENT, INC.	252377	10/17/97	923-923-3306	1,038.46	INV 15859, PO 34913, OCT 11-17, STUDENT MEAL
ABL MANAGEMENT, INC.	252378	10/24/97	923-923-3306	1,026.13	INV 15862, PO 34913, OCT 18-24, STUDENT MEAL
ABL MANAGEMENT, INC.	252379	10/31/97	923-923-3306	968.59	INV 15863, PO 34913, OCT 25-31 STUDENT MEALS
COMMUNITY CORRECTIONS, INC.	252386	10/31/97	923-923-3317	5,280.00	INV 2186, PO 34907 & 34906, RES SERVICES FOR
COMMUNITY CORRECTIONS, INC.	252388	10/31/97	923-923-3317	80.00	INV 2198, PO 34906 & 34907, RES SERV FOR M.S
JOHN D. KING, ED.D. PSYCHOLOGI	252416	11/13/97	923-923-3317	525.00	NOV 6, J.PRINGNITZ, PSYCHOLOGICAL ASSESMENT,
THE ARROW PROJECT	252425	11/05/97	923-923-3317	522.72	OCT 97, PO 34908, D.PACHECO, RESIDENTAIL SER
YOUTH HABITAT OF TEXAS, INC.	252430	10/31/97	923-923-3317	2,561.84	OCT 97, PO 34909, B.GARZA, RESIDENTIAL SERVI
AT&T WIRELESS SERVICES	252898	11/05/97	923-923-4211	39.99	INV 003351, PO 35301, NICD BATT, J/SERV
AT&T WIRELESS SERVICES	252899	11/04/97	923-923-4211	41.49	INV 003336, PO 35301, CLA-BATTERY SAVER, J/S
CRAIG KOTZ	252865	11/26/97	923-923-4231	321.89	OCT 97, EXP REIMB, J/SERV
DAVID A. MURRAY	252867	11/03/97	923-923-4231	155.40	SEP 17-OCT 30, EXP REIMB, J/SERV
EVELYN MCDOWELL	252871	11/12/97	923-923-4231	17.28	SEP 26-OCT 23, EXP REIMB, J/SERV
GEORGETOWN HOSPITAL	252713	11/25/97	923-923-4610	2,000.00	LEASE FOR 609 E. UNIVERSITY, J/SERV
JB GOODWIN COMPANY	252733	11/25/97	923-923-4610	1,359.29	RENT LAKEAIRE SHOPPING CENTER, 2423 WILLIAMS
Total 923-COMMUNITY CORRECTIONS ASSISTANCE 97-98				\$ 18,186.34	
Total Fund Expenditures				\$ 18,186.34	
Less Fund Discounts				0.00	
Less Fund Credits				0.00	
Cash Required 923-COMMUNITY CORRECTIONS ASSISTANCE 97-98				\$ 18,186.34	

VOL 0094 PAGE 156

Vendor.....	Invoice Id	Inv Date	Account Number	Expense Amount	Description.....
925-STATE AID ASSIST. 97-98					
GUS'S DRUG	252324	10/22/97	925-925-3307	\$ 12.89	OCT 97, A#005288, PO 34875, J/SERV
GEORGETOWN MED CNTR	252406	09/17/97	925-925-3307	60.00	SEP 17, PO 34764, A#25583.26, K.M.WILSON, J/
GEORGETOWN MED CNTR	252407	09/24/97	925-925-3307	41.50	SEP 24, A#25583.27, PO 34764, B.P.RANGEL, J/
GEORGETOWN MED CNTR	252410	09/08/97	925-925-3307	81.00	SEP 8, A#25583.25, PO 34764, W.H.ADKINS, J/S
GEORGETOWN MED CNTR	252411	09/08/97	925-925-3307	41.50	SEP 8, A#25583.18, PO 34764, B.LEWIS, J/SERV
GEORGETOWN MED CNTR	252412	08/28/97	925-925-3307	84.50	AUG 28, A#25583.23, PO 34764, J.JENNINGS, J/
PAUL T. DABNEY, D.D.S.	252423	10/28/97	925-925-3307	100.00	OCT 28, ORAL EVALUATION, B.VALVERDE, J/SERV
PAUL T. DABNEY, D.D.S.	252424	10/29/97	925-925-3307	25.00	OCT 29, ORAL EVALUATION, C.FALLS, J/SERV
YOUTH HABITAT OF TEXAS, INC.	252431	10/07/97	925-925-3307	68.90	RX 592153, B.GARZA, J/SERV
SUSAN HILL ZINGERY	252732	11/25/97	925-925-3307	350.00	DETENTION HEALTH APPRAISALS PER CONTRACT 9/1
JOHN HOLBERT	252419	11/10/97	925-925-3317	265.00	OCT 13-NOV 3, J.MCWILLIAMS, PSYCHOTHERAPY, P
JOHN HOLBERT	252420	11/10/97	925-925-3317	155.00	OCT. 13-NOV 3, D.LOPEZ, PSYCHOTHERAPY, PO 349
COGNITIVE ALTERNATIVES	252385	11/05/97	925-925-4350	318.60	INV 1457, PO 35371, 3 SIATS MANUALS, J/SERV
WEST PUBLISHING CO	252429	10/28/97	925-925-4350	1,833.00	INV 70605, PO 35126, TX CRIM PROC, TX PENAL
Total 925-STATE AID ASSIST. 97-98				\$ 3,436.89	
Total Fund Expenditures				\$ 3,436.89	
Less Fund Discounts				0.00	
Less Fund Credits				0.00	
Cash Required 925-STATE AID ASSIST. 97-98				\$ 3,436.89	

VOL 0094 PAGE 157

Vendor.....	Invoice Id	Inv Date	Account Number	Expense Amount	Description.....
933-PURCH OF JUV JUSTICE ALTERNATIVES					
COMMUNITY CORRECTIONS, INC.	252387	10/31/97	933-933-4100	\$ 1,600.00	INV 2152, PO 34906 & 34907, RES SERV FOR C.F
Total 933-PURCH OF JUV JUSTICE ALTERNATIVES				\$ 1,600.00	
Total Fund Expenditures				\$ 1,600.00	
Less Fund Discounts				0.00	
Less Fund Credits				0.00	
Cash Required 933-PURCHASE OF JUVENILE JUSTICE ALTERNATIVES				\$ 1,600.00	

VOL 0094 PAGE 158

Vendor.....	Invoice Id	Inv Date	Account Number	Expense Amount	Description.....
934-JUV JUST ALT EDUC PROG					
BOB BARKER COMPANY, INC.	252382	11/11/97	934-934-3000	\$ 401.89	INV 564482, PO 35314, FITTED SHEETS/TOWELS,
BOB BARKER COMPANY, INC.	252383	11/06/97	934-934-3000	2,388.65	INV 562791, PO 35314, T-SHIRTS, J/SERV
Total 934-JUV JUST ALT EDUC PROG				\$ 2,790.54	
Total Fund Expenditures				\$ 2,790.54	
Less Fund Discounts				0.00	
Less Fund Credits				0.00	
Cash Required 934-JUV JUST ALT EDUC PROG				\$ 2,790.54	

VOL 0094 PAGE 159

Vendor.....	Invoice Id	Inv Date	Account Number	Expense Amount	Description.....
946-CARADA TASK FORCE 97-98					
BASTROP COUNTY AUDITOR'S OFFIC	252750	11/12/97	946-946-1100	\$ 4,852.00	OCT 15-31, SALARIES & FRINGES, TASK FORCE
FAYETTE COUNTY AUDITOR	252769	11/13/97	946-946-1100	2,433.08	OCT 97, SALARY & FRINGES FOR R.BLIESE, TASK
HAYS COUNTY AUDITOR	252773	11/10/97	946-946-1100	2,753.98	OCT 97 SALARY, F.T. HODGES, TASK FORCE
BASTROP COUNTY AUDITOR'S OFFIC	252750	11/12/97	946-946-2010	371.16	OCT 15-31, SALARIES & FRINGES, TASK FORCE
FAYETTE COUNTY AUDITOR	252769	11/13/97	946-946-2010	186.13	OCT 97, SALARY & FRINGES FOR R.BLIESE, TASK
HAYS COUNTY AUDITOR	252773	11/10/97	946-946-2010	210.68	OCT 97 SALARY, F.T. HODGES, TASK FORCE
BASTROP COUNTY AUDITOR'S OFFIC	252750	11/12/97	946-946-2020	339.64	OCT 15-31, SALARIES & FRINGES, TASK FORCE
FAYETTE COUNTY AUDITOR	252769	11/13/97	946-946-2020	188.56	OCT 97, SALARY & FRINGES FOR R.BLIESE, TASK
HAYS COUNTY AUDITOR	252773	11/10/97	946-946-2020	221.15	OCT 97 SALARY, F.T. HODGES, TASK FORCE
BASTROP COUNTY AUDITOR'S OFFIC	252750	11/12/97	946-946-2030	300.00	OCT 15-31, SALARIES & FRINGES, TASK FORCE
FAYETTE COUNTY AUDITOR	252769	11/13/97	946-946-2030	5.00	OCT 97, SALARY & FRINGES FOR R.BLIESE, TASK
HAYS COUNTY AUDITOR	252773	11/10/97	946-946-2030	181.78	OCT 97 SALARY, F.T. HODGES, TASK FORCE
BASTROP COUNTY AUDITOR'S OFFIC	252750	11/12/97	946-946-2050	448.80	OCT 15-31, SALARIES & FRINGES, TASK FORCE
FAYETTE COUNTY AUDITOR	252769	11/13/97	946-946-2050	121.65	OCT 97, SALARY & FRINGES FOR R.BLIESE, TASK
HAYS COUNTY AUDITOR	252773	11/10/97	946-946-2050	30.02	OCT 97 SALARY, F.T. HODGES, TASK FORCE
BASTROP COUNTY AUDITOR'S OFFIC	252750	11/12/97	946-946-2060	32.00	OCT 15-31, SALARIES & FRINGES, TASK FORCE
FAYETTE COUNTY AUDITOR	252769	11/13/97	946-946-2060	4.38	OCT 97, SALARY & FRINGES FOR R.BLIESE, TASK
STARLET HARP	252716	11/25/97	946-946-3000	2,190.00	RENT FOR TASK FORCE 12/1/97 TO 11/30/98
CENTRAL TEXAS REFUSE, INC.	252721	11/25/97	946-946-3000	57.72	REFUSE SERVICE, TASK FORCE
PRUCROW INDUSTRIAL PROPERTIES,	252723	11/25/97	946-946-3000	1,635.09	PROJ 843597-06, A#5400000594, TENANT-TGAADO
ABOLISH DIRT CLEANING CO., INC	252726	11/25/97	946-946-3000	180.00	MONTHLY CLEANING SERVICE, TASK FORCE
GLENH GRAHAM	252856	11/12/97	946-946-3000	125.48	NOV 10, EXP REIMB, TASK FORCE
FRANKIE HODGES	252872	11/17/97	946-946-3000	15.00	OCT 7, EXP REIMB, TASK FORCE
AT&T	252884	11/03/97	946-946-3000	237.09	NOV 97, A#019-170-1712-001, 170-1712, TASK F
CAPITOL AREA REGIONAL ANTI-DRU	252885	12/01/97	946-946-3000	7,108.00	PO 35741, RENLEHISH IMPRESS FUNDS, TASK FORC
AT&T	252888	11/03/97	946-946-3000	112.05	NOV 97, A#020-108-5406-001, 970-6518, TASK F
GTE MOBILNET INCORPORATED	252918	11/10/97	946-946-3000	84.06	NOV 97, 461-5324, TASK FORCE
GTE MOBILNET INCORPORATED	252919	11/16/97	946-946-3000	1.56	NOV 97, 217-0370, TASK FORCE
GTE MOBILNET INCORPORATED	252920	11/19/97	946-946-3000	57.19	NOV 97, 461-7041, TASK FORCE
GTE MOBILNET INCORPORATED	252921	11/19/97	946-946-3000	48.30	NOV 97, 517-7121, TASK FORCE
GTE MOBILNET INCORPORATED	252922	11/19/97	946-946-3000	32.63	NOV 97, 217-3721, TASK FORCE
GTE MOBILNET INCORPORATED	252923	11/16/97	946-946-3000	88.69	NOV 97, 217-7721, TASK FORCE
DON BUSH	252942	11/17/97	946-946-3000	8.95	NOV 8, EXP REIMB, TASK FORCE
Total 946-CARADA TASK FORCE 97-98				\$ 24,661.82	
Total Fund Expenditures				\$ 24,661.82	
Less Fund Discounts				0.00	
Less Fund Credits				0.00	
Cash Required 946-CARADA TASK FORCE 97-98				\$ 24,661.82	

**VOL 0094 PAGE 160**

Vendor.....	Invoice Id	Inv Date	Account Number	Expense Amount	Description...
					<i>approved 12-2-97</i>
					<i>John C. Dayflor</i>
TOTAL Cash Required, ALL FUNDS				\$ 636,202.49	

ADDENDUM

December 2, 1997

Texas District & County Retirement System	Military Buy Back-Wayne Benedict	\$360.00
---	----------------------------------	----------

TOTAL	\$360.00
-------	----------

*approved 12-2-97  
John C. Daeylle*

AGENDA ITEM # 4

December 2, 1997

\*

Consider noting in minutes any right-of-way work on any county road done by Road & Bridge Unified System.

No action taken on agenda item.

AGENDA ITEM # 5

December 2, 1997

\*

Consider noting in minutes report from TxDot on over axle/over weight tolerance permits.

Moved: Commissioner Boatright

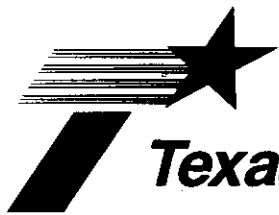
Seconded: Judge Doerfler

Motion: To note report from TxDot on over axle/over weight tolerance permits.

Vote: Motion carried 5 - 0

< Clerk copy here >



**Texas Department of Transportation**

DEWITT C. GREER STATE HIGHWAY BLDG. • 125 E. 11TH STREET • AUSTIN, TEXAS 78701-2483 • (512) 463-8585

November 13, 1997

Attn: County Clerks,

In accordance with HB 1547, 74th Legislature, enclosed is the notification to counties concerning the issuance of Over Axle / Over Gross Weight Tolerance Permits. HB 1547, 74th Legislature directs the Texas Department of Transportation to notify each county listed in the permit application for a permit issued under authority of TVCS 6701d-11 Sec. 5B, and the Texas Transportation Code, Chapter 623 that the person intends to operate or cause to be operated an overweight vehicle in the county.

If this report is going to the incorrect address please notify the Motor Carrier Division of any mailing address changes.

If you have any questions concerning this information, please contact Curtis Wagner at 512-465-3500.

noted 12-2-97  
John C. Dwyer

Sincerely,

*for: Moritz J. Chambers*  
Lawrance R. Smith, Director  
Motor Carrier Division

Enclosure

**Over Axle Weight Tolerance Permit Report  
for  
WILLIAMSON County  
October 25 - November 07  
1997**

<b>ANDREWS TRANSPORT INC</b> 97102953135T	<b>P O BOX 163469</b> 2HSFBXZR9LC034134 1JF327	<b>FT WORTH</b> OK	<b>TX</b>	<b>76117</b>
<b>BARTON TRUCKING CO INC</b> 97110753031T	<b>P O BOX 540</b> 1XKAD29X2LS534392 R62184	<b>GARRISON</b> TX	<b>TX</b>	<b>75946</b>
<b>COLLIER TRUCKING INC</b> 97110753025T	<b>4645 NORTH CENTRAL EXPRESSWAY</b> 1FUPYSYB3GP278491 R28488	<b>DALLAS</b> TX	<b>TX</b>	<b>75205</b>
<b>FORREST YANCEY</b> 97110753021T	<b>126 LAKESHORE DRIVE</b> 1XP5D69X0VD428811 1KF074	<b>CONROE</b> OK	<b>TX</b>	<b>77304</b>
<b>FRANK SMITH TRUCKING</b> 97110753026T 97110753027T 97110753028T 97110753029T 97110753030T	<b>P O BOX 764</b> 1XP5DB9X8LN286661 R07315 1XP5DB9X6LN286657 R07316 1XP5DB9XKN285154 R07317 1XP5DB9X4KN285151 R07318 1XP5DB9X9LN286667 R07319	<b>MARBLE FALLS</b> TX TX TX TX TX	<b>TX</b>	<b>78654</b>
<b>LAGRANGE CONCRETE &amp; AGGREGATES</b> 97110550046T	<b>1503 NORTH PARK</b> 1XKWD29X3ES321654 2DR353	<b>BRENHAM</b> TX	<b>TX</b>	<b>77833</b>
<b>LARRY BOEHME TRUCKING</b> 97102753001T 97102753002T 97102753003T	<b>9024 NORTHGATE # 2286</b> 1FUPDSYB2PP488222 2DY558 2FUYDCYB3KV352898 2DM572 1HSRDXRXEHB21367 2DM571	<b>AUSTIN</b> TX TX TX	<b>TX</b>	<b>78758</b>
<b>MONTESI'S DUMP TRUCKS</b> 97102953139T	<b>9902 BROAD FOREST</b> 1FUYDZYB8NH510681 2AJ056	<b>SAN ANTONIO</b> TX	<b>TX</b>	<b>78250</b>
<b>ODEEN HIBBS TRUCKING COMPANY</b> 97103153016T 97103153017T 97103153018T 97103153019T	<b>P O BOX 14332</b> 4V1JDBPF3SN842529 2DL038 1XPGDU9X1VD431715 R08460 1XPGDU9X5VD431717 R08461 1XPGDU9X3VD431716 2EC793	<b>AUSTIN</b> TX TX TX TX	<b>TX</b>	<b>78761</b>
<b>ODELL GEER CONSTRUCTION CO INC</b> 97110353001T 97110353002T	<b>P O BOX 1089</b> R685ST80609 2AC982 R685ST80608 2AC987	<b>BELTON</b> TX TX	<b>TX</b>	<b>76513</b>
<b>SMITH &amp; SMITH</b> 97103153004T	<b>327 SOUTH 38TH STREET</b> 1FUYDZYB3PH444964 2DL177	<b>KILLEEN</b> TX	<b>TX</b>	<b>76543</b>
<b>STATEWIDE TRANSPORT INC</b> 97102953078T 97102953079T 97102953080T 97102953081T 97102953082T 97102953083T 97102953084T 97102953085T 97102953086T 97102953087T 97102953088T	<b>P O BOX 791550</b> 1XP5DB8X3RD351187 2AH102 1XPCD29XXLD292779 2AG873 1XP9D29X5GP188991 2CM307 1FUYDSYB0MH506694 2BR505 1FUYDZYB1NP530986 2AH570 2XKDD29X2LM533528 2AD646 1XKAD29X1KJ533416 2AD647 1XKAD29X5KJ533418 2AD648 1XKAD29X7KJ533422 2AD649 1XKAD29X3KJ533420 2AD650 1XKDD69X7NJ570026 2AF703	<b>SAN ANTONIO</b> TX TX TX TX TX TX TX TX TX TX TX	<b>TX</b>	<b>78279 1550</b>
<b>TXI TRANSPORTATION COMPANY</b> 97110353006T	<b>245 WARD ROAD</b> 1XP5DB9X5SD357786 R72735	<b>MIDLOTHIAN</b> TX	<b>TX</b>	<b>76065</b>

**Over Axle Weight Tolerance Permit Report  
for  
WILLIAMSON County  
October 25 - November 07  
1997**

---

<b>TXI TRANSPORTATION COMPANY</b> 97110353007T	<b>245 WARD ROAD</b> 1XP5DB9X8SD357782	<b>R72736</b>	<b>MIDLOTHIAN</b> TX	<b>TX</b>	<b>76065</b>
<b>WOODARD CONSTRUCTION CO, INC</b> 97110550177T	<b>PO BOX 678</b> 4V1KDDME9LN631591	<b>2AU324</b>	<b>GATESVILLE</b> TX	<b>TX</b>	<b>76528</b>

Consider granting preliminary plat approval to Silver Creek Ranches, Section One.

Clyde Krause addressed the court on issues concerning Silver Creek Ranches, Section One and Boyd Henry property informing the court that the natural water flow on Mr. Henry's property has been reduced by (2/3) two-thirds.

Moved: Commissioner Boatright

Seconded: Judge Doerfler

Motion: To grant preliminary plat approval to Silver Creek Ranches, Section One.

Vote: Motion carried 3 - 0 With Commissioner Heiligenstein absent from the dais and Commissioner Mehevec abstaining.

< Clerk copy here >

977.69	977.69	977.69	977.69	977.69	977.69	977.69	977.69	977.69	977.69	977.69	977.69	977.69	977.69	977.69	977.69	977.69	977.69	977.69	977.69	977.69	977.69	977.69	977.69	977.69	977.69	977.69	977.69	977.69	977.69	977.69	977.69	977.69	977.69	977.69	977.69	977.69	977.69	977.69	977.69	977.69	977.69	977.69	977.69	977.69	977.69	977.69	977.69	977.69	977.69	977.69	977.69	977.69	977.69	977.69	977.69	977.69	977.69	977.69	977.69	977.69	977.69	977.69	977.69	977.69	977.69	977.69	977.69	977.69	977.69	977.69	977.69	977.69	977.69	977.69	977.69	977.69	977.69	977.69	977.69	977.69	977.69	977.69	977.69	977.69	977.69	977.69	977.69	977.69	977.69	977.69	977.69	977.69	977.69	977.69	977.69	977.69	977.69	977.69	977.69	977.69	977.69	977.69	977.69	977.69	977.69	977.69	977.69	977.69	977.69	977.69	977.69	977.69	977.69	977.69	977.69	977.69	977.69	977.69	977.69	977.69	977.69	977.69	977.69	977.69	977.69	977.69	977.69	977.69	977.69	977.69	977.69	977.69	977.69	977.69	977.69	977.69	977.69	977.69	977.69	977.69	977.69	977.69	977.69	977.69	977.69	977.69	977.69	977.69	977.69	977.69	977.69	977.69	977.69	977.69	977.69	977.69	977.69	977.69	977.69	977.69	977.69	977.69	977.69	977.69	977.69	977.69	977.69	977.69	977.69	977.69	977.69	977.69	977.69	977.69	977.69	977.69	977.69	977.69	977.69	977.69	977.69	977.69	977.69	977.69	977.69	977.69	977.69	977.69	977.69	977.69	977.69	977.69	977.69	977.69	977.69	977.69	977.69	977.69	977.69	977.69	977.69	977.69	977.69	977.69	977.69	977.69	977.69	977.69	977.69	977.69	977.69	977.69	977.69	977.69	977.69	977.69	977.69	977.69	977.69	977.69	977.69	977.69	977.69	977.69	977.69	977.69	977.69	977.69	977.69	977.69	977.69	977.69	977.69	977.69	977.69	977.69	977.69	977.69	977.69	977.69	977.69	977.69	977.69	977.69	977.69	977.69	977.69	977.69	977.69	977.69	977.69	977.69	977.69	977.69	977.69	977.69	977.69	977.69	977.69	977.69	977.69	977.69	977.69	977.69	977.69	977.69	977.69	977.69	977.69	977.69	977.69	977.69	977.69	977.69	977.69	977.69	977.69	977.69	977.69	977.69	977.69	977.69	977.69	977.69	977.69	977.69	977.69	977.69	977.69	977.69	977.69	977.69	977.69	977.69	977.69	977.69	977.69	977.69	977.69	977.69	977.69	977.69	977.69	977.69	977.69	977.69	977.69	977.69	977.69	977.69	977.69	977.69	977.69	977.69	977.69	977.69	977.69	977.69	977.69	977.69	977.69	977.69	977.69	977.69	977.69	977.69	977.69	977.69	977.69	977.69	977.69	977.69	977.69	977.69	977.69	977.69	977.69	977.69	977.69	977.69	977.69	977.69	977.69	977.69	977.69	977.69	977.69	977.69	977.69	977.69	977.69	977.69	977.69	977.69	977.69	977.69	977.69	977.69	977.69	977.69	977.69	977.69	977.69	977.69	977.69	977.69	977.69	977.69	977.69	977.69	977.69	977.69	977.69	977.69	977.69	977.69	977.69	977.69	977.69	977.69	977.69	977.69	977.69	977.69	977.69	977.69	977.69	977.69	977.69	977.69	977.69	977.69	977.69	977.69	977.69	977.69	977.69	977.69	977.69	977.69	977.69	977.69	977.69	977.69	977.69	977.69	977.69	977.69	977.69	977.69	977.69	977.69	977.69	977.69	977.69	977.69	977.69	977.69	977.69	977.69	977.69	977.69	977.69	977.69	977.69	977.69	977.69	977.69	977.69	977.69	977.69	977.69	977.69	977.69	977.69	977.69	977.69	977.69	977.69	977.69	977.69	977.69	977.69	977.69	977.69	977.69	977.69	977.69	977.69	977.69	977.69	977.69	977.69	977.69	977.69	977.69	977.69	977.69	977.69	977.69	977.69	977.69	977.69	977.69	977.69	977.69	977.69	977.69	977.69	977.69	977.69	977.69	977.69	977.69	977.69	977.69	977.69	977.69	977.69	977.69	977.69	977.69	977.69	977.69	977.69	977.69	977.69	977.69	977.69	977.69	977.69	977.69	977.69	977.69	977.69	977.69	977.69	977.69	977.69	977.69	977.69	977.69	977.69	977.69	977.69	977.69	977.69	977.69	977.69	977.69	977.69	977.69	977.69	977.69	977.69	977.69	977.69	977.69	977.69	977.69	977.69	977.69	977.69	977.69	977.69	977.69	977.69	977.69	977.69	977.69	977.69	977.69	977.69	977.69	977.69	977.69	977.69	977.69	977.69	977.69	977.69	977.69	977.69	977.69	977.69	977.69	977.69	977.69	977.69	977.69	977.69	977.69	977.69	977.69	977.69	977.69	977.69	977.69	977.69	977.69	977.69	977.69	977.69	977.69	977.69	977.69	977.69	977.69	977.69	977.69	977.69	977.69	977.69	977.69	977.69	977.69	977.69	977.69	977.69	977.69	977.69	977.69	977.69	977.69	977.69	977.69	977.69	977.69	977.69	977.69	977.69	977.69	977.69	977.69	977.69	977.69	977.69	977.69	977.69	977.69	977.69	977.69	977.69	977.69	977.69	977.69	977.69	977.69	977.69	977.69	977.69	977.69	977.69	977.69	977.69	977.69	977.69	977.69	977.69	977.69	977.69	977.69	977.69	977.69	977.69	977.69	977.69	977.69	977.69	977.69	977.69	977.69	977.69	977.69	977.69	977.69	977.69	977.69	977.69	977.69	977.69	977.69	977.69	977.69	977.69	977.69	977.69	977.69	977.69	977.69	977.69	977.69	977.69	977.69	977.69	977.69	977.69	977.69	977.69	977.69	977.69	977.69	977.69	977.69	977.69	977.69	977.69	977.69	977.69	977.69	977.69	977.69	977.69	977.69	977.69	977.69	977.69	977.69	977.69	977.69	977.69	977.69	977.69	977.69	977.69	977.69	977.69	977.69	977.69	977.69	977.69	977.69	977.69	977.69	977.69	977.69	977.69	977.69	977.69	977.69	977.69	977.69	977.69	977.69	977.69	977.69	977.69	977.69	977.69	977.69	977.69	977.69	977.69	977.69	977.69	977.69	977.69	977.69	977.69	977.69	977.69	977.69	977.69	977.69	977.69	977.69	977.69	977.69	977.69	977.69	977.69	977.69	977.69	977.69	977.69	977.69	977.69	977.69	977.69	977.69	977.69	977.69	977.69	977.69	977.69	977.69	977.69	977.69	977.69	977.69	977.69	977.69	977.69	977.69	977.69	977.69	977.69	977.69	977.69	977.69	977.69	977.69	977.69	977.69	977.69	977.69	977.69	977.69	977.69	977.69	977.69	977.69	977.69	977.69	977.69	977.69	977.69	977.69	977.69	977.69	977.69	977.69	977.69	977.69	977.69	977.69	977.69	977.69	977.69	977.69	977.69	977.69	977.69	977.69	977.69	977.69	977.69	977.69	977.69	977.69	977.69	977.69	977.69	977.69	977.69	977.69	977.69	977.69	977.69	977.69	977.69	977.69	977.69	977.69	977.69	977.69	977.69	977.69	9
--------	--------	--------	--------	--------	--------	--------	--------	--------	--------	--------	--------	--------	--------	--------	--------	--------	--------	--------	--------	--------	--------	--------	--------	--------	--------	--------	--------	--------	--------	--------	--------	--------	--------	--------	--------	--------	--------	--------	--------	--------	--------	--------	--------	--------	--------	--------	--------	--------	--------	--------	--------	--------	--------	--------	--------	--------	--------	--------	--------	--------	--------	--------	--------	--------	--------	--------	--------	--------	--------	--------	--------	--------	--------	--------	--------	--------	--------	--------	--------	--------	--------	--------	--------	--------	--------	--------	--------	--------	--------	--------	--------	--------	--------	--------	--------	--------	--------	--------	--------	--------	--------	--------	--------	--------	--------	--------	--------	--------	--------	--------	--------	--------	--------	--------	--------	--------	--------	--------	--------	--------	--------	--------	--------	--------	--------	--------	--------	--------	--------	--------	--------	--------	--------	--------	--------	--------	--------	--------	--------	--------	--------	--------	--------	--------	--------	--------	--------	--------	--------	--------	--------	--------	--------	--------	--------	--------	--------	--------	--------	--------	--------	--------	--------	--------	--------	--------	--------	--------	--------	--------	--------	--------	--------	--------	--------	--------	--------	--------	--------	--------	--------	--------	--------	--------	--------	--------	--------	--------	--------	--------	--------	--------	--------	--------	--------	--------	--------	--------	--------	--------	--------	--------	--------	--------	--------	--------	--------	--------	--------	--------	--------	--------	--------	--------	--------	--------	--------	--------	--------	--------	--------	--------	--------	--------	--------	--------	--------	--------	--------	--------	--------	--------	--------	--------	--------	--------	--------	--------	--------	--------	--------	--------	--------	--------	--------	--------	--------	--------	--------	--------	--------	--------	--------	--------	--------	--------	--------	--------	--------	--------	--------	--------	--------	--------	--------	--------	--------	--------	--------	--------	--------	--------	--------	--------	--------	--------	--------	--------	--------	--------	--------	--------	--------	--------	--------	--------	--------	--------	--------	--------	--------	--------	--------	--------	--------	--------	--------	--------	--------	--------	--------	--------	--------	--------	--------	--------	--------	--------	--------	--------	--------	--------	--------	--------	--------	--------	--------	--------	--------	--------	--------	--------	--------	--------	--------	--------	--------	--------	--------	--------	--------	--------	--------	--------	--------	--------	--------	--------	--------	--------	--------	--------	--------	--------	--------	--------	--------	--------	--------	--------	--------	--------	--------	--------	--------	--------	--------	--------	--------	--------	--------	--------	--------	--------	--------	--------	--------	--------	--------	--------	--------	--------	--------	--------	--------	--------	--------	--------	--------	--------	--------	--------	--------	--------	--------	--------	--------	--------	--------	--------	--------	--------	--------	--------	--------	--------	--------	--------	--------	--------	--------	--------	--------	--------	--------	--------	--------	--------	--------	--------	--------	--------	--------	--------	--------	--------	--------	--------	--------	--------	--------	--------	--------	--------	--------	--------	--------	--------	--------	--------	--------	--------	--------	--------	--------	--------	--------	--------	--------	--------	--------	--------	--------	--------	--------	--------	--------	--------	--------	--------	--------	--------	--------	--------	--------	--------	--------	--------	--------	--------	--------	--------	--------	--------	--------	--------	--------	--------	--------	--------	--------	--------	--------	--------	--------	--------	--------	--------	--------	--------	--------	--------	--------	--------	--------	--------	--------	--------	--------	--------	--------	--------	--------	--------	--------	--------	--------	--------	--------	--------	--------	--------	--------	--------	--------	--------	--------	--------	--------	--------	--------	--------	--------	--------	--------	--------	--------	--------	--------	--------	--------	--------	--------	--------	--------	--------	--------	--------	--------	--------	--------	--------	--------	--------	--------	--------	--------	--------	--------	--------	--------	--------	--------	--------	--------	--------	--------	--------	--------	--------	--------	--------	--------	--------	--------	--------	--------	--------	--------	--------	--------	--------	--------	--------	--------	--------	--------	--------	--------	--------	--------	--------	--------	--------	--------	--------	--------	--------	--------	--------	--------	--------	--------	--------	--------	--------	--------	--------	--------	--------	--------	--------	--------	--------	--------	--------	--------	--------	--------	--------	--------	--------	--------	--------	--------	--------	--------	--------	--------	--------	--------	--------	--------	--------	--------	--------	--------	--------	--------	--------	--------	--------	--------	--------	--------	--------	--------	--------	--------	--------	--------	--------	--------	--------	--------	--------	--------	--------	--------	--------	--------	--------	--------	--------	--------	--------	--------	--------	--------	--------	--------	--------	--------	--------	--------	--------	--------	--------	--------	--------	--------	--------	--------	--------	--------	--------	--------	--------	--------	--------	--------	--------	--------	--------	--------	--------	--------	--------	--------	--------	--------	--------	--------	--------	--------	--------	--------	--------	--------	--------	--------	--------	--------	--------	--------	--------	--------	--------	--------	--------	--------	--------	--------	--------	--------	--------	--------	--------	--------	--------	--------	--------	--------	--------	--------	--------	--------	--------	--------	--------	--------	--------	--------	--------	--------	--------	--------	--------	--------	--------	--------	--------	--------	--------	--------	--------	--------	--------	--------	--------	--------	--------	--------	--------	--------	--------	--------	--------	--------	--------	--------	--------	--------	--------	--------	--------	--------	--------	--------	--------	--------	--------	--------	--------	--------	--------	--------	--------	--------	--------	--------	--------	--------	--------	--------	--------	--------	--------	--------	--------	--------	--------	--------	--------	--------	--------	--------	--------	--------	--------	--------	--------	--------	--------	--------	--------	--------	--------	--------	--------	--------	--------	--------	--------	--------	--------	--------	--------	--------	--------	--------	--------	--------	--------	--------	--------	--------	--------	---

AGENDA ITEM # 7

December 2, 1997

\*

Discuss and take any appropriate action on Wylie Post Road in Breakaway Park.

Agenda item tabled until further notice.

AGENDA ITEM # 8

December 2, 1997

\*

Consider authorizing and setting date to receive proposals for drug testing.

Moved: Commissioner Hays

Seconded: Judge Doerfler

Motion: To authorize Auditors office to advertise 10:00 a.m. on December 19, 1997 to receive proposals for drug testing in the auditors conference room and award proposal on January 6, 1998.

Vote: Motion carried 5 - 0

AGENDA ITEM # 9

December 2, 1997

\*

Consider changing boundaries for election precincts 331, 340 and 360 and designating new polling place for precinct 340.

Moved: Commissioner Hays

Seconded: Commissioner Boatright

Motion: To approve changing boundaries for election precincts 331, 340 and 360 and designate Brushy Creek Elementary, 3800 Stonebridge Drive, Round Rock, Texas as new polling place for precinct 340.

Vote: Motion carried 5 - 0

< Clerk copy here >

ORDER APPROVING PRECINCT BOUNDARY CHANGES  
AND POLLING PLACES IN WILLIAMSON COUNTY, TEXAS

On this the 2nd day of December, 1997, the Commissioners' Court of Williamson County, Texas, does hereby order the following action, effective January 1, 1998:

(1) that the boundaries of election precincts 331, 340, and 360 be changed for the purpose of conforming to the attached field notes and maps and

(2) that the new polling place for election precinct 340 be Brushy Creek Elementary, 3800 Stonebridge Drive, Round Rock, Texas.

John C. Doerfler 12-2-97  
John C. Doerfler, County Judge

9

November 25, 1997

Memorandum

To: County Judge and Commissioners  
From: John Willingham  
Subject: Proposed Precinct and polling place changes

Because of heavy growth in precinct 331 (St. Philip's UMC) and difficulties finding a polling place for precinct 340, I have an item on next Tuesday's agenda that proposes the transfer of some precinct 331 territory to precinct 340. The transferred territory would include Brushy Creek Elementary School, which could then become a polling place for precinct 340.

About 600 voters would be changed from 331 to 340, leaving 331 with about 2,800 voters and increasing 340 to about 2,350 voters. No congressional, state senate, or state rep lines are involved in the change.

The 600 voters should find the Brushy Creek polling location more convenient than the former location for 340, Round Rock Presbyterian Church—way out on Sam Bass Road. Round Rock Presbyterian is actually in precinct 348; we have had to combine two precincts in one location because the existing territory for 340 does not include an available polling place. We have had complaints from election judges and voters.

Please let me know if you have any questions about this proposal. Thanks.

*approved 12-2-97  
John C. Daefler*



12-2-97

Election Precinct No. 331  
Williamson County, Texas

BEGINNING at the intersection of Farm-to-Market Highway No 620 and the centerline of the Southern Pacific Railroad;

THENCE, easterly, along the North line of FM Highway No 620, to the intersection with the center of Great Oaks Drive;

THENCE, in a generally northwesterly direction, with said centerline of Great Oaks Drive to the intersection with the centerline of Stonebridge Drive;

THENCE, northwesterly along the centerline of Stonebridge Drive to its intersection with Hillside Drive;

THENCE, westerly along the centerline of Hillside Drive to its intersection with Morgan Hill Trail;

THENCE, northerly along the centerline of Morgan Hill Trail to its intersection with Crescent Heights Trail;

THENCE, northerly along the centerline of Crescent Heights Trail to the end point (between blocks 17224 and 17221) of Crescent Heights Trail;

THENCE, an extension from the end point of Crescent Heights Trail in a northerly direction to the point of intersection of Brushy Creek and South Brushy Creek;

THENCE, upstream, in a westerly direction with the center of the said South Brushy Creek, to the intersection with the centerline of the Southern Pacific Railroad;

THENCE, southerly along the center of the Southern Pacific Railroad, to the Place of BEGINNING.

12-2-97

Election Precinct No. 340  
Williamson County, Texas

BEGINNING at the intersection of the centerline of County Road No 175 (Sam Bass Road) with the centerline of County Road No 174 (Brushy Creek Road);

THENCE, westerly, with said centerline of County Road No 174 (Brushy Creek Road), to the intersection with the center of Brushy Creek;

THENCE, northwesterly with said center of Brushy Creek to the intersection with Great Oaks Drive;

THENCE, southerly along the center line of Great Oaks Drive to its intersection with Stonebridge Drive;

THENCE, northwesterly along the centerline of Stonebridge Drive to its intersection with Hillside Drive;

THENCE, westerly along the centerline of Hillside Drive to its intersection with Morgan Hill Trail;

THENCE, northerly along the centerline of Morgan Hill Trail to its intersection with Crescent Heights Trail;

THENCE, northerly along the centerline of Crescent Heights Trail to the end point (between blocks 17224 and 17221) of Crescent Heights Trail;

THENCE, an extension from the end point of Crescent Heights Trail in a northerly direction to the point of intersection of Brushy Creek and South Brushy Creek;

THENCE, northwesterly with said center of Brushy Creek to the intersection with County Road 178;

THENCE, northeasterly on County Road 178 to its intersection with Farm-to-Market Highway No 1431;

THENCE, northeasterly with said South line of Farm-to-Market Highway No 1431, to the intersection with the centerline of County Road No 175 (Sam Bass Road);

THENCE, southeasterly with said centerline of County Road No 175 (Sam Bass Road), to the Place of BEGINNING.

12-2-97

Election Precinct No. 360  
Williamson County, Texas

BEGINNING at the intersection of the center of Brushy Creek and the center of Great Oaks Drive;

THENCE, southerly along the center of Great Oaks Drive to its intersection with Farm-to-Market Highway 620 North;

THENCE, northeasterly along the North line of Farm-to-Market Highway 620 to its intersection with a Westerly city limit of the City of Round Rock;

THENCE, following the meanders and turns of the city limit line of the City of Round Rock in a northerly and then easterly direction to the point of its intersection with Brushy Creek;

THENCE, in a northwesterly direction with the center of Brushy Creek to its intersection with the center of Great Oaks Drive, the Place of BEGINNING.

AGENDA ITEM # 10December 2, 1997\*Hold public hearing for a 4-way stop at El Salido Parkway and Old Mill Road.

At 10:20 a.m. Judge Doerfler announced public hearing for a 4-way stop at El Salido Parkway and Old Mill Road open.

Commissioner Boatright addressed the court concerning a 4-way stop at El Salido Parkway and Old Mill Road.

At 10:23 a.m. Judge Doerfler announced public hearing for a 4-way stop at El Salido Parkway and Old Mill Road closed.

AGENDA ITEM # 11December 2, 1997\*Consider approving a 4-way stop at El Salido Parkway and Old Mill Road.

Moved: Commissioner Heiligenstein

Seconded: Commissioner Boatright

Motion: To approve a 4-way stop at El Salido Parkway and Old Mill Road.

Vote: Motion carried 5 - 0

AGENDA ITEM # 12December 2, 1997\*Consider appointing members of Showbarn Advisory Committee.

Moved: Judge Doerfler

Seconded: Commissioner Boatright

Motion: To note recommendations of Bobby Naivar, Marty Lindenblatt, Eugene Marek and Logan Bartz as the Showbarn Advisory Committee with caretaker to be an ex-officio member.

Vote: Motion carried 5 - 0

AGENDA ITEM # 13December 2, 1997\*Consider approving the following fixed assets from the Auditor's office to be sold at auction:

- (1) 4 drawer green file cabinet #A106912
- (1) 4 drawer green file cabinet (no tag)
- (1) black metal mail sorter - 5 slots
- (1) Wyse Keyboard - #A106977
- (1) Acer Keyboard - #A106395
- (1) IBM Keyboard - #108793
- (1) Panasonic Phone - Speakerphone - serial #6EAKC037008
- (1) Casio Calculator - #A106980
- (1) Secretarial Chair - #A106941
- (1) Galaxy Oscillating Fan - 12"
- (1) Dazy Coffee Warmer - model CW-10
- (1) Crystal paper weight/paper clip holder
- (1) Gray metal "in" box

Moved: Commissioner Mehevec

Seconded: Judge Doerfler

Motion: To approve fixed assets from the Auditor's office to be sold at auction:

- (1) 4 drawer green file cabinet #A106912
- (1) 4 drawer green file cabinet (no tag)
- (1) black metal mail sorter - 5 slots
- (1) Wyse Keyboard - #A106977
- (1) Acer Keyboard - #A106395
- (1) IBM Keyboard - #108793
- (1) Panasonic Phone - Speakerphone - serial #6EAKC037008
- (1) Casio Calculator - #A106980
- (1) Secretarial Chair - #A106941
- (1) Galaxy Oscillating Fan - 12"
- (1) Dazy Coffee Warmer - model CW-10
- (1) Crystal paper weight/paper clip holder
- (1) Gray metal "in" box

Vote: Motion carried 5 - 0

CHANGE OF FIXED ASSET STATUS

DATE 11/19/97

THE FOLLOWING FIXED ASSET IS TO BE: (Circle One)

TRANSFERRED

SOLD Auction

DISPOSED

FIXED ASSET

Quantity	Description	Model	Serial #
1	4 drawer Green file cabinet		A106912
1	4 drawer Green file cabinet		No tag #

FROM (Transferor): Auditor  
TO (Transferee): Auction

The Transferor requests that this fixed asset be removed from the inventory for his/her office and placed in the inventory for the Transferee's office as of the date shown above.

[Signature]  
Transferor - Elected Official/Department Head

Transferee - Elected Official/Department Head

approved 12-2-97  
John C. Daefler

[Signature]

## CHANGE OF FIXED ASSET STATUS

DATE 11-5-97

THE FOLLOWING FIXED ASSET IS TO BE: (Circle One)

TRANSFERRED

SOLD - Next auction

DISPOSED

## FIXED ASSET

Quantity	Description	Model	Serial #
1	Black metal mail sorter - 5 slots		
1	Wyse Keyboard	TAG# A106977	637J0302167
1	Acer Keyboard	TAG# A106395	K6311123524
1	IBM Keyboard	TAG# A108793	Ø11Ø66Ø
1	PANASONIC Phone - Speakerphone		6EAKCØ37ØØ8

FROM (Transferor): Auditor's office

TO (Transferee): \_\_\_\_\_

The Transferor requests that this fixed asset be removed from the inventory for his/her office and placed in the inventory for the Transferee's office as of the date shown above.

[Signature]  
Transferor - Elected Official/Department Head

\_\_\_\_\_  
Transferee - Elected Official/Department Head

approved 12-2-97  
John C. Dayler

[Signature]

## CHANGE OF FIXED ASSET STATUS

DATE 11-5-97

THE FOLLOWING FIXED ASSET IS TO BE: (Circle One)

TRANSFERRED

SOLD

- Next Auction

DISPOSED

## FIXED ASSET

Quantity	Description	Model	Serial #
1	Casio Calculator - Model DR-2280	TAG# A106980	3203109
1	Chair - Secretarial	TAG# A106941	
1	Galaxy Oscillating Fan - 12"		
1	Dazy coffee warmer	Model CW-10	
1	Crystal paper weight / paper clip holder		
1	Gray metal "in" box		

FROM (Transferor): Auditor's Office

TO (Transferee): \_\_\_\_\_

The Transferor requests that this fixed asset be removed from the inventory for his/her office and placed in the inventory for the Transferee's office as of the date shown above.

[Signature]  
Transferor - Elected Official/Department Head

\_\_\_\_\_  
Transferee - Elected Official/Department Head

[Signature]  
approved 12-2-97  
John C. Daerfler

AGENDA ITEM # 14

December 2, 1997

\*

Consider approve trade-in of (1) Minolta EP4300 Copier, serial #364393, for Constable Precinct 3.

Moved: Judge Doerfler

Seconded: Commissioner Hays

Motion: To approve trade-in of (1) Minolta EP4300 Copier, serial #364393, for Constable Precinct 3.

Vote: Motion carried 5 - 0

< Clerk copy here >



CHANGE OF FIXED ASSET STATUS

DATE 11-7-97

THE FOLLOWING FIXED ASSET IS TO BE: (Circle One)

TRANSFERRED

TRADE IN  
for new  
copier

SOLD  
DISPOSED

FIXED ASSET

Quantity	Description	Model	Serial #
<u>1</u>	<u>MINOLTA EP4300 COPIER</u>	<u>EP4300</u>	<u>364393</u>

FROM (Transferor): *[Signature]*

TO (Transferee): \_\_\_\_\_

The Transferor requests that this fixed asset be removed from the inventory for his her office and placed in the inventory for the Transferee's office as of the date shown above.

*[Signature]*  
Transferor - Elected official/Department Head

\_\_\_\_\_  
Transferee - Elected Official/Department Head

approved 12-2-97  
*[Signature]*

*[Signature]*



VOL 0094 PAGE 180

## CUSTOMER INSTALLATION SITE:

\* WILLIAMSON COUNTY  
\* CONST PCT #3  
\* 312 MAIN  
\*  
\* GEORGETOWN, TX 78626  
\*

SEE

## INSTALLING MINOLTA DEALERSHIP:

DANKA INDUSTRIES INC.  
11525B STONEHOLLOW DRIVE #200  
AUSTIN, TX 78758  
CONTACT:  
PHONE: 512-837-3670

WELCOME TO THE MINOLTA MAJOR ACCOUNTS PROGRAM. THE FOLLOWING ITEMS HAVE BEEN ORDERED ON YOUR PURCHASE ORDER # 35057

ITEM #	ITEM DESCRIPTION	QTY	ORD	QTY B/O	QTY SHP'D
1	1151-311 EP2010 CSPRO COPIER	1	EA	0	1
2	4479-1300-00 PF-4D DUPLEX CABINET	1	EA	0	1
3	4486-6120-00 AFR-12 REVERSING DOC. FEEDER	1	EA	0	1
4	4430-6520-00 S-106 10-BIN SORTER	1	EA	0	1
5	4425-9350-00 MOUNT KIT F	1	EA	0	1
6	4428-7600-00 SORTER KIT E	1	EA	0	1
7	8935-2020-00 EP1083 TONER	2	EA	0	2

*Monday Morning*

EQPT SENT TO: DANKA INDUSTRIES INC.

512-837-3670

11525B STONEHOLLOW DRIVE #200  
AUSTIN, TX 78758

-----  
- PLEASE CONTACT THE AUTHORIZED MINOLTA DEALER ABOVE TO ARRANGE FOR INSTALLATION.

\*\*\*\*\* SPECIAL INFORMATION \*\*\*\*\*  
DIRECT ALL INQUIRIES TO MINOLTA CORPORATION, MAP ADMINISTRATION OR YOUR LOCAL DEALER.

TO AVOID  
SUPPLY SHORTAGES,  
CHECK SUPPLY STOCK!!

*Debbie Montgomery*

60

ACCOUNT #	ORDER REF#	RG24	MA INCLUDED	COPY BASE	2,000 PER MONTH
16656 -000001	C710270099	RENTAL	SUPPLIES	EXCESS	2000 6000 0
	10/27/97		ARE INCLD.	RATE:	0.0078 0.0150 0.0000

T#V710270117

\*\*\* THANK YOU FOR YOUR PARTICIPATION IN THE MINOLTA MAJOR ACCOUNTS PROGRAM \*\*\*

AGENDA ITEM # 15December 2, 1997\*

Open and consider awarding, extending, or rejecting any bids for motorcycles for Sheriff's office.

At 10:26 a.m. Judge Doerfler announced time to receive bids for motorcycles for Sheriff's office open.

At 10:27 a.m. Judge Doerfler announced time to receive bids for motorcycles closed.

One bid was received from:

Central Texas H-D, LLC

Moved: Commissioner Mehevec

Seconded: Commissioner Boatright

Motion: To note opening of bid for motorcycles for Sheriff's office and award bid December 9, 1997.


Vote: Motion carried 5 - 0

< Clerk copy here >

VOL 0094 PAGE 182

## WILLIAMSON COUNTY BID FORM

The undersigned, by his/her signature, represents that he/she is authorized to bind the bidder to fully comply with the terms and conditions of the attached Bid Invitation, Specifications, and Special Provisions for the amount(s) shown on the accompanying bid sheet(s). By signing below, you have read the entire document and agreed to the terms therein.

NAME OF BIDDER: Central Texas Harley-Davidson LLCMailing Address: 6310 N. Lamar Blvd.City: Austin State: TX Zip: 78752Telephone: (512) 459-8763 Fax: (512) 459-8765 Date of Bid: 11/26/97  
Signature of Person Authorized to Sign BidName and Title of Signer: Les Paul President  
(Please Print or Type)

## PLEASE COMPLETE THE FOLLOWING:

Prompt Payment Discount: 0 % 0 days. (If no discount is offered, Net 30 will apply.)☐ Bidding on "all or none" basis. (Will accept award of "all" items only. If left blank, low item will apply.)☒ Bidding on low item basis. (Will accept award on "any or all" low bid items.)

List Additional Limitations if applicable:

10% Discount on all parts & accessories  
for Duty motorcycles after units are in  
service.

**DO NOT SIGN OR SUBMIT THIS FORM**  
**WITHOUT READING ENTIRE DOCUMENT**

62

---

**WILLIAMSON COUNTY  
PURCHASING DEPARTMENT**

---

**FORMAL INVITATION FOR BIDS  
CONTRACT: MOTORCYCLES**

---

**BID NUMBER: 98WC101      BID OPENING DATE & TIME: NOVEMBER 18, 1997 - 10:00 AM**

---

BIDS must be received in the Williamson County Auditor's Office prior to **10:00 AM on Tuesday, November 18, 1997**. At which time the BIDS will be opened in the Commissioners' Courtroom on the 2nd floor of the County Courthouse. BIDS received after that time will not be opened and will be considered void and unacceptable. As to each item bid, the Court may either reject all BIDS or award a contract to the lowest and best BID.

SEALED BIDS may be hand-delivered to:  
Williamson County Auditor's Office  
Third (3rd) floor, Suite 303  
Williamson County Courthouse (on the square)  
710 Main St., Georgetown, Texas  
OR

SEALED BIDS may be mailed to:  
Williamson County Auditor's Office  
Ginny Atkinson - Purchasing  
710 Main St. - Suite 303  
Georgetown, Texas 78626

**ALL BIDS MUST BE SUBMITTED ON THE FORMS PROVIDED IN THIS BID DOCUMENT.**

**ALL INFORMATION REQUIRED BY THE BID FORM MUST BE FURNISHED OR THE BID MAY BE DEEMED NON RESPONSIVE. WHERE THERE IS AN ERROR IN THE EXTENSION OF PRICE, THE UNIT PRICE SHALL GOVERN.**

**ALL BIDS MUST BE SUBMITTED IN TRIPLICATE (1 ORIGINAL COMPLETE BID SET & 2 COPIES).**

**ALL BIDS MUST BE RETURNED IN A SEALED ENVELOPE, MARKED WITH THE BID NAME, BID NUMBER, AND BID OPENING DATE & TIME.**

**FACSIMILE TRANSMITTALS SHALL NOT BE ACCEPTED.**

1. It is the intent of the Commissioners' Court to award contracts separately for each item, for each department, and for each distinct geographical area served by a department. However, any bidder who wishes to restrict his BID to particular departments or areas must expressly do so. For purposes of this notice, each Commissioner of Justice Precinct is a separate department.

(1) Unless the BID received expressly states that the bidder will accept only the award of all items bid, each item in the BID will be considered separately and will be rejected or awarded on a low item basis.

(2) Unless the BID expressly states that the bidder will accept only an award for the entire county government, contracts will be awarded separately for the requirements of each county department to the bidder who is lowest and best for that individual department.

(3) Similarly, unless the notice or BID expressly states otherwise, BIDS will be considered separately for each distinct geographic area served by each department and will be awarded to the lowest and best bidder who can provide service to the department in that particular area. The definition of these geographic areas, unless expressly stated in this notice or the BID, shall be at the discretion of Commissioners' Court at the time a BID is awarded.

2. No more than one BID will be awarded for any item for a single department and area. All BIDS may be rejected for some items, departments or areas, even though awards are made for others. The convenience of having a single source for similar items will be taken into consideration together with price in determining the lowest and best BID.
3. All of the items listed are to be bid Free On Board to final destination (FOB DESTINATION) with all transportation charges if applicable to be included in the price, unless otherwise specified in the Invitation to Bids. The title and risk of loss of the goods shall not pass to the County until receipt and acceptance takes place at the FOB point.
4. All of the items listed are to be bid on a "per unit" basis, stating a firm price per unit or unit quantity of each item bid. This price must be good from the date of BID opening for a fixed period of time. Unless the BID expressly states otherwise, this period shall be until the end of the current fiscal year on September 30, 1998. Bids which do not state a fixed price, or which are subject to change without notice, will not be considered. The Court may award a contract for the period implied or expressly stated in the lowest and best Bid, but for no longer than the current fiscal year.
5. At the end of the current fiscal year, the Commissioners Court reserves the right to extend this contract, by mutual agreement of both parties, as it deems to be in the best interest of the county. This extension will be in twelve (12) month increments for up to an additional twenty four (24) months, with the terms and conditions remaining the same; and with a price escalation at renewal time each year of no more than the consumer price index for that year. The total period of this contract, including all extensions will not exceed a maximum combined period of thirty six (36) months. The extension of this contract is contingent on the appropriation of necessary funds by Commissioners Court for the fiscal year in question. Upon the failure of Commissioners Court to so appropriate in any year, the Contractor may elect to terminate this agreement, with no additional liability to the County. The County and the Contractor agree that termination shall be the Contractors sole remedy under this circumstance.
6. The estimated quantity of each item listed in the notice is only an estimate -- the actual quantity to be purchased may be more or less. The County will not be obligated to purchase any minimum amount, and it may purchase any reasonable amount greater than the estimate for the same unit price. Any limit on quantities available must be stated expressly in the BID.
7. It is understood that the Commissioners Court of Williamson County, Texas, reserves the right to accept or reject any and/or all BIDS for any or all materials and/or services covered in this BID request, and to waive informalities or defects in the BID or to accept such BID it shall deem to be in the best interest of Williamson County.
8. Awards should be made approximately four (4) weeks after the Bid opening date. To obtain results, or if you have any questions, please contact Ginny Atkinson at (512) 930-4418.
9. Funding: Funds for payment have been provided through the Williamson County budget approved by Commissioners Court for the October 1, 1997/ September 30, 1998 fiscal year.
10. Late BID: BIDS received after submission deadline shall be unopened and will be considered VOID AND UNACCEPTABLE. Williamson County is not responsible for lateness of mail, carrier, etc.
11. Altering BID: BIDS cannot be altered or amended after submission deadline.

12. **Sales Tax:** Williamson County is by statute, exempt from the State Sales Tax and Federal Excise Tax.
13. **Contract:** This BID, when properly accepted by Williamson County, shall constitute a contract equally binding between the successful bidder and Williamson County. No different or additional terms will become part of this contract.
14. **Changes:** No oral statement of any person shall modify or otherwise change, or affect the terms, conditions, plans and/or specifications stated in the various BID Packages and or BID Instructions/Requirements.
15. **Delivery Times and Locations:** The commodity and/or service covered by this BID shall be as stated in the various BID Packages.
16. **Payments:** Payment shall be made by check from the County upon satisfactory delivery and acceptance of items and submission of the Invoice to the ordering department. For purposes of payment discounts, time will begin upon satisfactory delivery of goods and/or submission of acceptable invoice, whichever is last. Partial payments will not be made unless specifically requested and approved by the County prior to contract award. As a minimum, invoices shall include:
- (1) Name, address, and telephone number of Contractor and similar information in the event the payment is to be made to a different address
  - (2) County contract, Purchase Order, and/or delivery order number
  - (3) Identification of items or service as outlined in the contract
  - (4) Quantity or quantities, applicable unit prices, total prices, and total amount
  - (5) Any additional payment information which may be called for by the contract
- Payment inquiries should be directed to the Auditor's Office, Accounts Payable Department:  
Julie Hillhouse, 930-4323 or Donna McKittrick, 930-4359.
17. **Conflict of Interest:** No public official shall have interest in a contract, in accordance with Vernon's Texas Codes Annotated, Local Government Code Title 5, Subtitle C, Chapter 171.
18. **Ethics:** The bidder shall not accept or offer gifts or anything of value nor enter into any business arrangement with any employee, official or agent of Williamson County.
19. **Minimum Standards for Responsible Bidders:** A prospective bidder must affirmatively demonstrate bidder's responsibility. A prospective bidder must meet the following requirements:
- a. have adequate financial resources, or the ability to obtain such resources as required;
  - b. be able to comply with the required or proposed delivery schedule;
  - c. have a satisfactory record of performance;
  - d. be otherwise qualified and eligible to receive an award.

Williamson County may request representation and other information sufficient to determine bidder's ability to meet these minimum standards listed above.

VOL 0094 PAGE 186

20. **References:** Williamson County requests bidder to supply with this BID, a list of at least three (3) references where like services have been supplied by their firm. Include name of firm, address, telephone number and name of representative.
21. **Bidder shall:** provide with this BID response, all documentation required by this BID. Failure to provide this information may result in rejection of the BID.
22. **Termination for Default:** Williamson County reserves the right to enforce the performance of this contract in any manner prescribed by law or deemed to be in the best interest of the County in the event of breach or default of this contract. Non-Performance of the bidder in terms of specifications shall be a basis for the termination of the contract by the County. The County shall not pay for commodities/services which are unsatisfactory. Vendors will be given a reasonable opportunity before termination to correct the deficiencies. This, however, shall in no way be construed as negating the basis for termination for non-performance.
23. **Contract Administration:** Under this contract, Ginny Atkinson, Williamson County Auditor's Office, shall be the contract administrator with designated responsibility to ensure compliance with contract requirements, such as but not limited to, acceptance, inspection and delivery. The contract administrator will serve as liaison between Williamson County Commissioners Court and the successful bidder.
24. **Purchase Order:** A purchase order(s) shall be generated by Williamson County to the successful bidder as products and/or services are required. The purchase order number must appear on all itemized invoices and/or request for payment.
25. **Silence of Specifications:** The apparent silence of these specifications as to any detail or to the apparent omission from it of a detailed description concerning any point, shall be regarded as meaning that only the best practices are to prevail. All interpretations of these specifications shall be made on the basis of this statement.
26. **Bids MUST BE:** legible and of a quality that can be reproduced.
27. **BID forms that are included in BID packages shall be used. CHANGES to BID forms made by bidders shall DISQUALIFY THE BID.** Exceptions to the BID forms and or specifications shall be made on an attachment to the BID package. Call Ginny Atkinson (512) 930-4418 for explanation if exceptions are needed.

**FOR DETAILED SPECIFICATIONS AND QUESTIONS RELATING TO THE BIDDING PROCESS, CONTACT GINNY ATKINSON AT (512) 930-4418.**

- ▶ **TECHNICAL QUESTIONS CAN BE ANSWERED BY CALLING SGT. JEFF PEARSON AT (512) 930-3164.**



**PUBLIC NOTICE  
WILLIAMSON COUNTY  
INVITATION FOR BIDS**

**The Williamson County Commissioners Court invites the submission of sealed BIDS for:**

**MOTORCYCLES**

**Sealed BIDS will be publicly opened and read aloud in the County Commissioners Court Room, 2nd Floor, Williamson County Courthouse, Georgetown, Texas on Tuesday, November 18, 1997 at 10:00 AM .**

**BIDS received after the above stated date and time will be returned unopened.**

**Detailed specifications may be obtained by calling Ginny Atkinson at (512) 930-4418 or by visiting the Williamson County Procurement web site.**

**<http://www.willlamson-county.org/Procurement/index.html>**

**The Williamson County Commissioners Court reserves the right to accept the lowest and best BID as deemed by the Court, or reject any and/or all BIDS.**

**Issued by order of the Williamson County Commissioners Court on October 28, 1997. John C. Doerfler, County Judge.**

VOL 0094 PAGE 188

## WILLIAMSON COUNTY

## BID SPECIFICATIONS/BID SHEETS

## TWO OR MORE MOTORCYCLES

## I. GENERAL

Manufacturers' published special "Police Package Equipment" will be bid. Where an option exists, the extra heavy duty accessory as listed in manufacturers' literature for Police motorcycles must be bid and installed. All bids must specify a delivery date along with published literature on item bid. Motorcycles will be a two-wheel unit designed and equipped for use as a Police patrol unit and to provide functionally compatible systems as required by these specifications.

## II. REQUIREMENTS

Year Model: New 1997 or 1998 year model.

Wheel Base: 64" or larger.

Weight: Minimum dry weight 700 lbs.

Engine: Two, four, or six cylinder, air or liquid cooled, with a minimum of 1300 cc.

Transmission: Five (5) speed manual with neutral signal light on instrument cluster area.

Clutch: Multiple disc, wet type with safety knob left-hand control, designed to prevent starting in gear.

Frame: Heavy duty, tubular steel, double cradle.

Drive: Belt or shaft drive.

Gear Shift: Will be heel/toe operation.

Air Cleaner: Will be dry element type.

Horn: High fidelity, heavy duty, all weather type or through siren.

Fuel Tank: Minimum capacity of 4.0 US gallons.

Handlebars: Will be buckhorn type, stainless steel, or chrome plated with black handles. Two (2) rearview mirrors are to be mounted on the handlebars or fairing, one on each side, rectangular in shape and show a true image.

Brakes: Dual hydraulic front disc, single hydraulic rear disc with sight gauges on master cylinder(s).

Wheels and Tires: Wheels will be cast alloy type designed to retain deflated tires. Tires will be non skid, four (4) ply, precision molded, first quality tires. Front tires with a straight tread pattern is NOT acceptable. Tire and Wheel assemblies will be statically and dynamically balanced and have a minimum speed rating of 120 mph. Bead retention type only.

68

**Suspension System:** Heavy Duty.

**Seat:** Standard or Deluxe model, shop adjustable, solo Police type, Heavy duty.

**Safety Bars:** Front and rear, heavy duty, chrome plated safety bars are to be wider than the saddle bags on rear.

**Footboards:** Will be rubber covered, positioned to afford maximum rider comfort and designed to fold up on contact.

**Stand:** Heavy duty, side or center folding stand.

**Saddle Bags:** Will be dual, lockable, heavy duty, at least nine (9) inches high excluding lid or cover.

**Keys:** Three sets of keys will be provided for each motorcycle and saddlebag at time of delivery. The saddlebags will be keyed alike on each cycle.

**Electrical System:** Will be a twelve (12) volt system with circuit breakers or fused for protection of circuits from overload or short circuits.

**Charging:** Heavy duty alternator or generator. Largest capacity available with regulator. Minimum twenty-six (26) amp.

**Battery:** Heavy duty with minimum eighteen (18) amp hour capacity. Battery must be able to support the following: Emergency lights, radio, electronic siren and flashers, simultaneously with engine running. A battery tender type trickle charging system must be supplied.

**Tail Light:** Rear flasher and radio will operate simultaneously for a minimum of one and one-half (1 ½) hours with the engine off, permitting the engine to be restarted with starter.

**Starter:** Twelve (12) volt, heavy duty, electric.

**Instruments:** Units will be provided a calibrated one hundred twenty (120) mph speedometer, gauges or indicator lights for low oil pressure, temperature, neutral gear, high beam and turn signals. Gauges will be used in place of indicator lights where available.

**Siren:** Latest state of the art electronic siren 100 watts minimum. With wail, yelp, radio interface, public address capabilities and microphone.

**Speaker:** Will have a watt rating of at least ten (10) percent in excess of the amplifier output and will be heavy duty all weather type. Only a single driver will be acceptable within 100 watts as required. Controls will be located on the handle bars or fairing.

**Pursuit Lights:** Will have high visibility strobe type red and blue lights on front and high visibility strobe on rear and each side of the rear end. A one hundred eighty (180) watt, eight (8) outlet power supply will be installed to power the lights.

**Mounting Brackets:** Will be furnished and installed for mounting Police radio equipment. Mounting brackets will be black epoxy enamel in finish and be mounted as to absorb shocks and vibration. The radio bracket will be mounted over the rear fender.

VOL 0094 PAGE 190

**Fairing:** An aerodynamic frame or fork mounted fairing will be furnished. The fairing will be designed so that it does not cause high speed wobble. The fairing will be equipped with a windshield made of "Lexan" MR4000. The windshield, fairing, and saddlebags must be manufactured by or for the motorcycle manufacturer for the specific bid. NO EXCEPTIONS.

**Cigarette Lighter:** A lighter receptacle will be installed in the left saddlebag and wired and fused with shielded electrical cable separate from other electrical systems.

**Signals:** Front and rear directional signals and hazard flashers will be supplied and installed.

**Color:** The color of the painted surfaces of the motorcycle will be white, including fuel tank, fairing, saddlebags, and fenders. Seat color will be black.

**Exhaust:** Dual exhaust.

**DELIVERY DATE:** No Later than 90-120 days from order date.

**COST OF EACH MOTORCYCLE PER ABOVE LISTED SPECIFICATIONS:** \$14,238<sup>58</sup>

70

**VENDOR NAME:** Central Texas H-D LLC

**Central Texas Harley-Davidson**

6310 North Lamar Blvd.

Austin, Texas 78752

Phone: (512) 459-8763 Fax: (512) 459-8765



## References:

City of Austin  
Purchasing Office

206 E. 9th St.

Two Commodore Plaza, Suite 15.120

Austin, Texas

78701

Travis County  
Purchasing Office

314 W. 11th, Room 400

P.O. Box 1748

Austin, Texas

78767

Sgt. Bill Thompson, A.P.D.

608 N. Tumbleweed Trail

Austin, Texas

78733

**BID CHECK LIST**

Please check the following prior to sealing and submitting your bid/proposal.

1. Official Williamson County Bid Form Completed, signed, and enclosed?

YES ☒ NO ☐

2. All bid specification sheets completed (including company name at bottom of each sheet) and attached?

YES ☒ NO ☐

3. Have you included three (3) complete bid sets (1 original & 2 copies) as required?

YES ☒ NO ☐

4. Have you written the name of your business on the front of the sealed envelope?

YES ☒ NO ☐

5. Have you written the bid name, bid number, and bid opening date & time on the front of the sealed envelope?

YES ☒ NO ☐

AGENDA ITEM # 16December 2, 1997\*Consider approving any action on abandoned old County Road/FM 685.

Moved: Commissioner Mehevec

Seconded: Commissioner Hays

Motion: To approve order that said portion of the public road be discontinued, abandoned and closed on Country Road/FM 685.

Vote: Motion carried 4 - 0 With Commissioner Boatright absent from the dais.

&lt; Clerk copy here &gt;

THE STATE OF TEXAS                   X           BEFORE THE COMMISSIONERS' COURT  
   X  
 COUNTY OF WILLIAMSON           X           OF WILLIAMSON COUNTY, TEXAS

ORDER CLOSING PORTION OF A PUBLIC ROAD

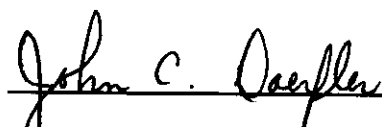
On this the 18th day of September, 1997 came on to be heard by the Commissioners' Court of Williamson, County, Texas, the application of Anne Mehevec and eight (8) others, freeholders of Precinct No. 4 in Williamson County, Texas, for the discontinuance, abandonment and closing of a portion of a public road located in Precinct No. 4 in Williamson County, Texas, the centerline description of said portion of a public road being described as follows:

See Exhibit "A"

and it appearing that notice of said application was given, for twenty days before its filing, by such applicants, by written advertisement of their intended application, posted at the Courthouse door of this County and on the north end adjacent to FM 685, on the south end where Kaatz Ln and FM 685 meet, in Hutto, Texas, and two other public places in the vicinity of the portion of the public road sought to be closed, as required by law;

Whereupon, it was moved by Commissioner Jerry Mehevec, and seconded by Commissioner David Hays, that said portion of the public road be discontinued, abandoned and closed, which motion was unanimously adopted by the Court;

It is, accordingly, ORDERED that all of the portion of the public road located in Precinct No. 4 in Williamson County, Texas, described above, be, and the same is hereby, discontinued, abandoned and closed.

  
 John Doerfler, Williamson County Judge



## FIELD NOTES

BEING 3.50 ACRES OF LAND OUT OF THE N. D. WALLING SURVEY, ABSTRACT NO. 675, IN WILLIAMSON COUNTY, TEXAS, AND BEING PART OF THAT CERTAIN ABANDONED PUBLIC ROAD LYING AND BEING SITUATED ALONG THE WEST SIDE OF THE "THIRD TRACT" AND "FOURTH TRACT" DESCRIBED IN A DEED TO THREE G PARTNERSHIP RECORDED IN VOLUME 1738, PAGE 155, OFFICIAL RECORDS OF WILLIAMSON COUNTY, TEXAS, AND BEING MORE PARTICULARLY DESCRIBED BY METES AND BOUNDS AS FOLLOWS, TO WIT:

BEGINNING at a point in the west line of said "Third Tract" at the easterly termination of County Road No. 128, (Kaatz Lane), said point also being the southeast corner of that certain 51.06 acre tract of land described in a deed to Carolyn Pfeiffer recorded in Volume 1571, Page 383, Deed Records of Williamson County;

THENCE with an existing fence along the west line of said abandoned road and the west line of said "Third Tract" and said "Fourth Tract", the following described five (5) courses and distances:

- 1) N 13° 18' 24" E a distance of 740.37 feet;
- 2) N 12° 50' 42" E a distance of 588.06 feet;
- 3) N 10° 22' 55" E a distance of 393.41 feet;
- 4) N 06° 08' 04" E a distance of 498.92 feet, and;
- 5) N 09° 53' 18" E a distance of 731.06 feet to a point three hundred (300) feet east of the east right-of-way line of FM-685, said point being the northwest corner hereof;

THENCE N 27° 20' 19" E a distance of 166.74 feet, parallel with and 300 feet east of the east right-of-way line of FM-685, across said abandoned road, to the northeast corner hereof in the east line of said abandoned road;

THENCE with the easterly line of said abandoned road, with the remains of an old fence and hedgerow, the following described five (5) courses and distances:

- 1) S 09° 53' 18" W a distance of 888.49 feet;
- 2) S 06° 08' 04" W a distance of 499.14 feet;
- 3) S 10° 22' 55" W a distance of 396.34 feet;
- 4) S 12° 50' 42" W a distance of 589.34 feet, and;
- 5) S 13° 18' 24" W a distance of 769.73 feet to the southeasterly corner hereof at the intersection of the east line of said abandoned road and the westerly line of said "Third Tract" at a fence and gate, said fence and gate being the easterly termination of County Road No. 128;

THENCE N 46° 26' 41" W a distance of 57.88 feet along said fence and gate to the Place of Beginning, containing 3.50 acres of land.

COALTER & ASSOCIATES, SURVEYORS

*Stan Coalter*

Stan Coalter, RPLS, LSLs  
12-1-97 File No. 97057RS



## FIELD NOTES

BEING 1.15 ACRES OF LAND OUT OF THE N. D. WALLING SURVEY, ABSTRACT NO. 675, IN WILLIAMSON COUNTY, TEXAS, AND BEING PART OF THAT CERTAIN ABANDONED PUBLIC ROAD LYING AND BEING SITUATED ALONG THE WEST SIDE OF THE "FOURTH TRACT" DESCRIBED IN A DEED TO THREE G PARTNERSHIP RECORDED IN VOLUME 1738, PAGE 155, OFFICIAL RECORDS OF WILLIAMSON COUNTY, AND BEING MORE PARTICULARLY DESCRIBED BY METES AND BOUNDS AS FOLLOWS, TO WIT:

BEGINNING at a concrete right-of-way monument found at the most northerly intersection of the west line of said abandoned road and the southeasterly line of FM-685;

THENCE N 27° 20' 19" E a distance of 170.08 feet with the southeasterly line of FM-685 to its intersection with the east line of said abandoned road, said point being the most northerly corner hereof;

THENCE with the east line of said abandoned road, with the remains of an old fence and hedgerow, the following described two (2) courses and distances:

- 1) S 10° 14' 32" W a distance of 349.57 feet, and;
- 2) S 09° 53' 18" W a distance of 657.72 feet to a point three hundred (300) feet east of the east line of said FM-685;

THENCE S 27° 20' 19" W a distance of 166.74 feet, parallel with and 300 feet east of the east right-of-way line of FM-685, across said abandoned road, to the most southerly corner hereof in the west line of said abandoned road;

THENCE with the west line of said abandoned road, the following described two (2) courses and distances:

- 1) N 09° 53' 18" E a distance of 816.94 feet to a concrete right-of-way monument at the intersection of the southeasterly line of FM-685 and the west line of said abandoned road, and;
- 2) N 10° 14' 32" E a distance of 187.16 feet with the southeasterly right-of-way of FM-685 to the Place of Beginning, containing 1.15 acres of land.

COALTER & ASSOCIATES, SURVEYORS

*Stan Coalter*

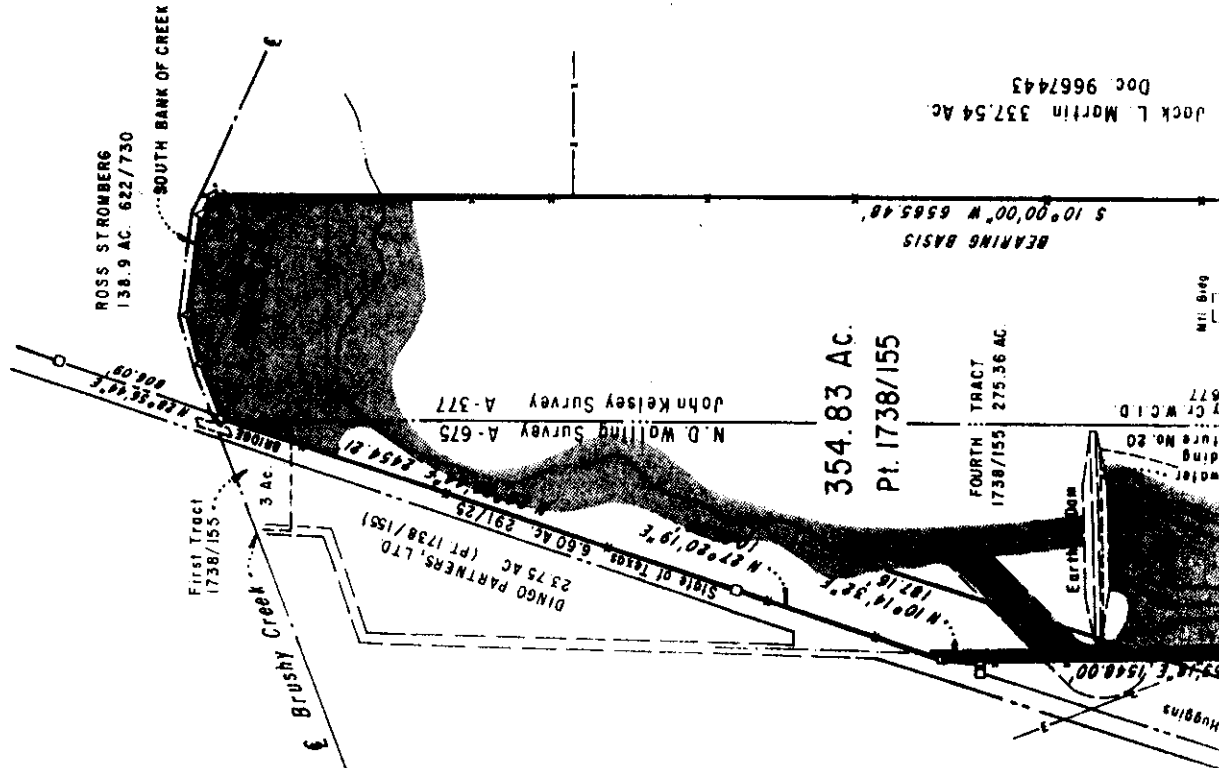
Stan Coalter, RPLS, LSLs  
12-1-97 File No. 97057RN

wp-6



# PT. N. D. WALLING SURVEY, ABSTRACT No. 675, and the JOHN KELSEY SURVEY, ABSTRACT 377

WILLIAMSON COUNTY, TX.

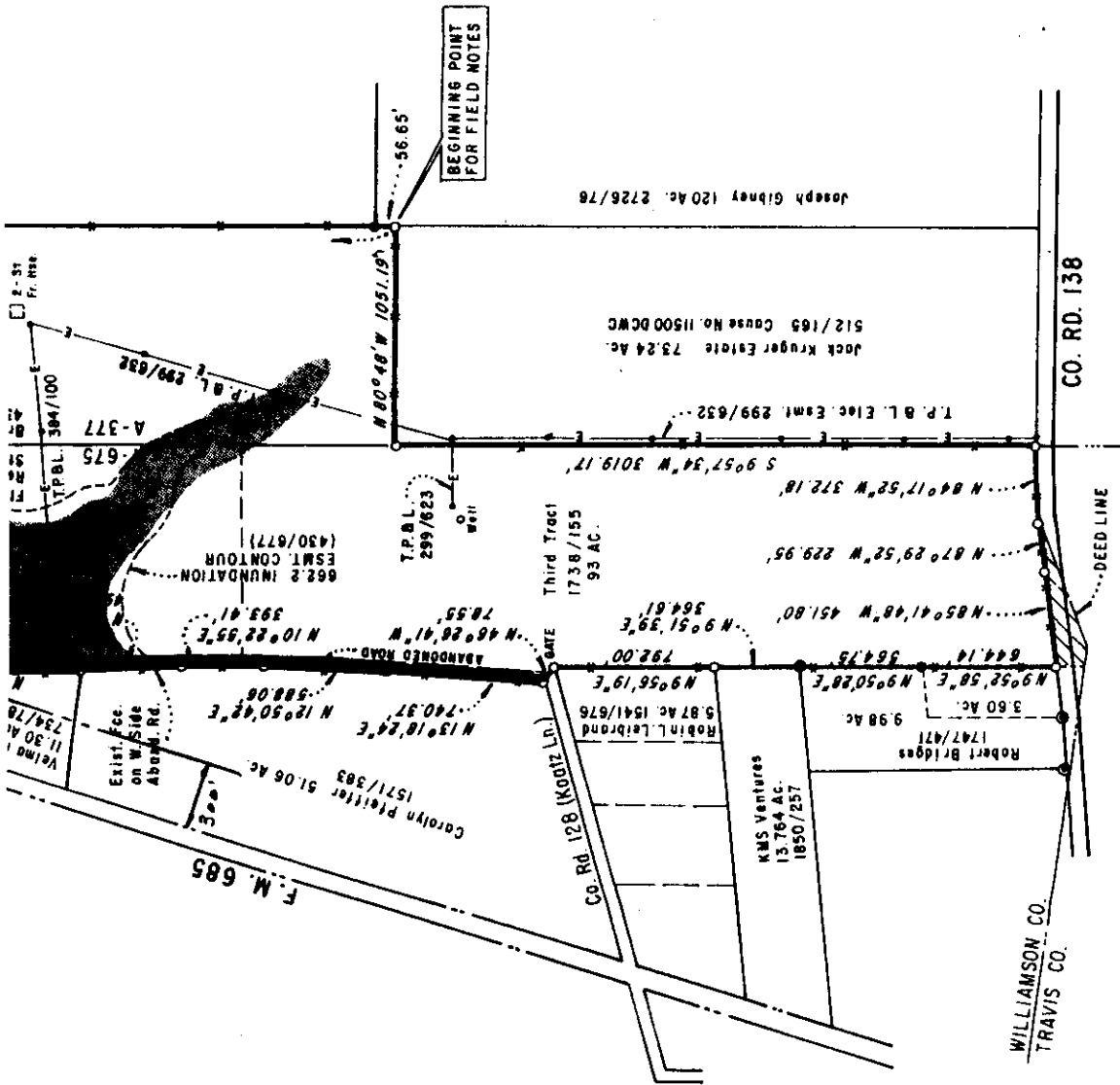


## LINE TABLE

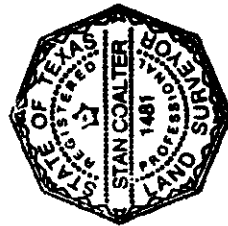
L-1	N 78°00'00"E	290.02'
L-2	N 85°41'36"E	221.30'
L-3	S 70°17'35"E	463.98'
L-4	S 54°45'00"E	96.76'

1) The following easements do not apply to this tract:  
to TP&L Company, Vol. 801, Pg. 305 and Vol. 356, Pg. 630, both DRWC; to TU Electric Company, Vol. 2621, Pg. 543, DRWC.

2) This tract subject to a blanket easement not to exceed 15' to Manville Water Supply Corporation, Vol. 561, Pg. 668, DRWC.



**FLOOD NOTE**  
 The property described hereon IS PARTIALLY within a Special Flood Hazard Area as determined by the Federal Emergency Management Agency; the flood hazard area being identified on F.I.R.M. Panel No. 481079 0335 C effective 9-27-91  
☐ Zone A ☒ Zone AE ☐ Zone X (Areas determined to be outside the 500 year flood plain.)  
**SURVEYORS CERTIFICATE TO GEORGETOWN TITLE CO., STEWART TITLE GUARANTY CO., BUYER & LIENHOLDER.**  
 The plat shown hereon is a true, correct and accurate representation of the property as determined by survey, the lines and dimensions of said property being as indicated by the plat; the size, location and type of buildings and improvements are as shown, all improvements being within the boundaries of the property, set back from the property lines the distances indicated. There are no encroachments, conflicts or protrusions, shortages in area, visible utility lines or roads crossing said property, except as shown hereon, and said property has access to and from



*Stan Coalter*

REVISED 6-12-97  
 6-9-97

Ref.: JACK L. MARTIN & PATSY W. MARTIN  
 GF 97035501 F

Consider re-awarding bid for medical supplies for jail to next lowest bidder on 8 items due to awarded bidder not being able to fulfill bid.

Moved: Judge Doerfler

Seconded: Commissioner Hays

Motion: To re-award bid for medial supplies for jail to United Medical for 8 of the 11 unavailable items and **not** award the 3 remaining items.

Vote: Motion carried 5 - 0

COMMISSIONERS COURT RECESSED TO EXECUTIVE SESSION AT 10:31 A.M. ON TUESDAY, DECEMBER 2, 1997.

AGENDA ITEM # 18

December 2, 1997

\*

Discuss potential litigation: James Taylor v. Williamson County (EXECUTIVE SESSION REQUESTED as per V.T.C.A. Govt. Code Sec. 551.071 pertaining to consultation with attorney.)

Those present for executive session were Judge Doerfler, Commissioners Heiligenstein, Boatright, Hays and Mehevec along with County Attorney Gene Taylor, First Assistant County Attorney Dale Rye and Captain Richard Elliott with the Williamson County Sheriff's Department.

The pending litigation of James Taylor v. Williamson County was discussed but no action taken.

AGENDA ITEM # 19

December 2, 1997

\*

Discuss pending litigation: Hilltop Baptist Temple, Inc. v. Williamson County, et al (EXECUTIVE SESSION REQUESTED as per V.T.C.A. Govt. Code Section 551.071 pertaining to consultation with attorney.)

Those present for executive session were Judge Doerfler, Commissioners Heiligenstein, Boatright, Hays and Mehevec along with County Attorney Gene Taylor, First Assistant County Attorney Dale Rye, Tax Assessor/Collector Deborah Hunt and attorney Roy Armstrong with McCreary, Velselka, Bragg & Allen.

The pending litigation of Hilltop Baptist Temple, Inc. v. Williamson County, et al was discussed but no action taken.

**COMMISSIONERS COURT RECONVENED FROM EXECUTIVE SESSION AT 11:03 A.M. ON TUESDAY, DECEMBER 2, 1997.**

AGENDA ITEM # 20

December 2, 1997

\*

Discuss and take any appropriate action on potential litigation: James Taylor v. Williamson County.

Moved: Commissioner Boatright

Seconded: Commissioner Mehevec

Motion: To retain the firm of Walsh, Akins & Davis to represent Williamson County on the potential litigation of James Taylor v. Williamson County.

Vote: Motion carried 4 - 0 With Commissioner Heiligenstein absent from the dais.

AGENDA ITEM # 21

December 2, 1997

\*

Discuss and take any appropriate action on pending litigation: Hilltop Baptist Temple, Inc. v. Williamson County.

No action taken on agenda item.

AGENDA ITEM # 22

December 2, 1997

\*

Hear comments from commissioners.

Commissioner Boatright recommended replacing the freezer at the showbarn before the livestock show begins because of no place to keep ice.

Commissioner Heiligenstein commented on the RFP's out concerning the road consulting request and does not see any major limitations.

Commissioner Hays commented on a meeting concerning SH-130 within the next two weeks and a public hearing by TxDot in Austin concerning SH-130.

Commissioner Hays filed an affidavit of substantial interest concerning Georgetown San Gabriel Properties, Ltd.

**AFFIDAVIT OF SUBSTANTIAL INTEREST**  
(Pursuant to Section 171.004 Local Government Code)

County of Williamson	{	Know all Persons by
	{	
	{	
State of Texas	{	These Presents

That before me, the undersigned Notary Public of the State of Texas, personally appeared David Hays, who swore or affirmed by personal knowledge that the following statement is true and correct:

"(1) I am a local public official, as defined in Chapter 171, Texas Local Government Code, being the County Commissioner for Precinct Three of Williamson County, Texas.

(2) I have a substantial interest in the following business entity which might be affected by a vote or decision involving it: Georgetown San Gabriel Properties, Ltd.

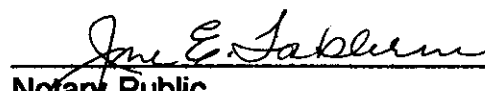
(3) The nature and extent of my interest is as follows: my family owns a minority limited partner's interest in Georgetown San Gabriel Properties, Ltd.

(4) I will therefore abstain from participation as a public official in any matter that will have a special economic impact on the said business entity that is distinguishable from its effect on the general public, unless specifically permitted to do so by Chapter 171 of the Texas Local Government Code."

  
\_\_\_\_\_  
David Hays, County Commissioner

Subscribed and sworn to before me on December 2, 1997.



  
\_\_\_\_\_  
Notary Public

COMMISSIONERS COURT ADJOURNED AT 11:21 A.M. ON TUESDAY, DECEMBER 2, 1997.

5

THE FOREGOING MINUTES in Volume 94 on pages 121 through 202, inclusive had at a Special Session of Commissioners Court of Williamson County, Texas, having been read are hereby approved this 9th day of December 1997.

John C. Doerfler, County Judge

ATTEST: Elaine Bizzell, Clerk County Court & Ex-officio Clerk,  
Commissioners Court, Williamson County, Texas

by: \_\_\_\_\_  
Deputy Clerk